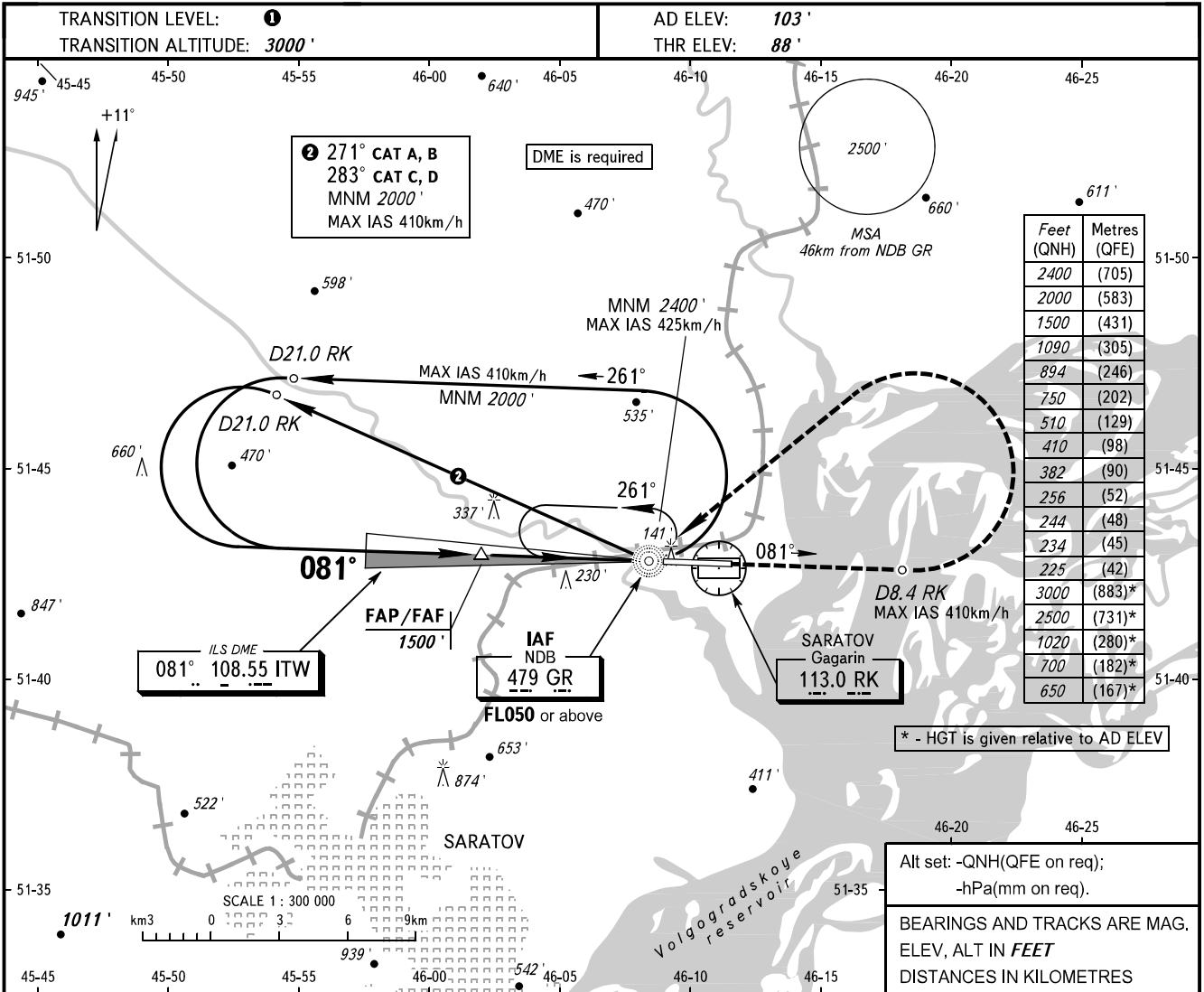


**INSTRUMENT
APPROACH
CHART - ICAO**

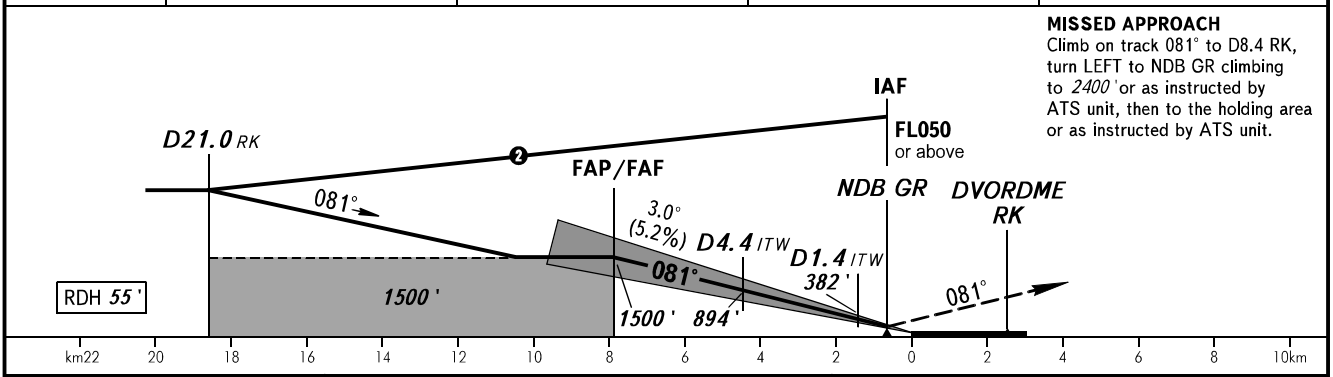
GAGARIN RADAR	130.300
GAGARIN TOWER	122.850

SARATOV, RUSSIA
GAGARIN
ILS Z CAT I, LOC Z RWY 08



Feet (QNH)	Metres (QFE)
2400	(705)
2000	(583)
1500	(431)
1090	(305)
894	(246)
750	(202)
510	(129)
410	(98)
382	(90)
256	(52)
244	(48)
234	(45)
225	(42)
3000	(883)*
2500	(731)*
1020	(280)*
700	(182)*
650	(167)*

DME RK	10.4	8.0	6.0	4.0
ALTITUDE	1500'	1090'	750'	410'



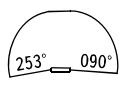
MISSED APPROACH
Climb on track 081° to D8.4 RK, turn LEFT to 240° or as instructed by ATS unit, then to the holding area or as instructed by ATS unit.

OCA(H)		A	B	C	D
Straight-in	CAT I	225' (137')	234' (146')	244' (156')	256' (168')
	LOC	510' (420')	510' (420')	510' (420')	510' (420')
Approach					
Circling		650' (550')	700' (600')	1020' (920')	1020' (920')

① TRANSITION LEVEL:
- FL040 when QNH is 1013 hPa (760mm mercury column) or above;
- FL050 when QNH is 977 hPa (733mm mercury column) or above, but less than 1013 hPa (760mm mercury column);
- FL060 when QNH is less than 977 hPa (733mm mercury column).

WARNING
Zero range of DME ITW is indicated at RWY 08 THR.

Visual manoeuvring south of AD is PROHIBITED.



CHANGE: New chart