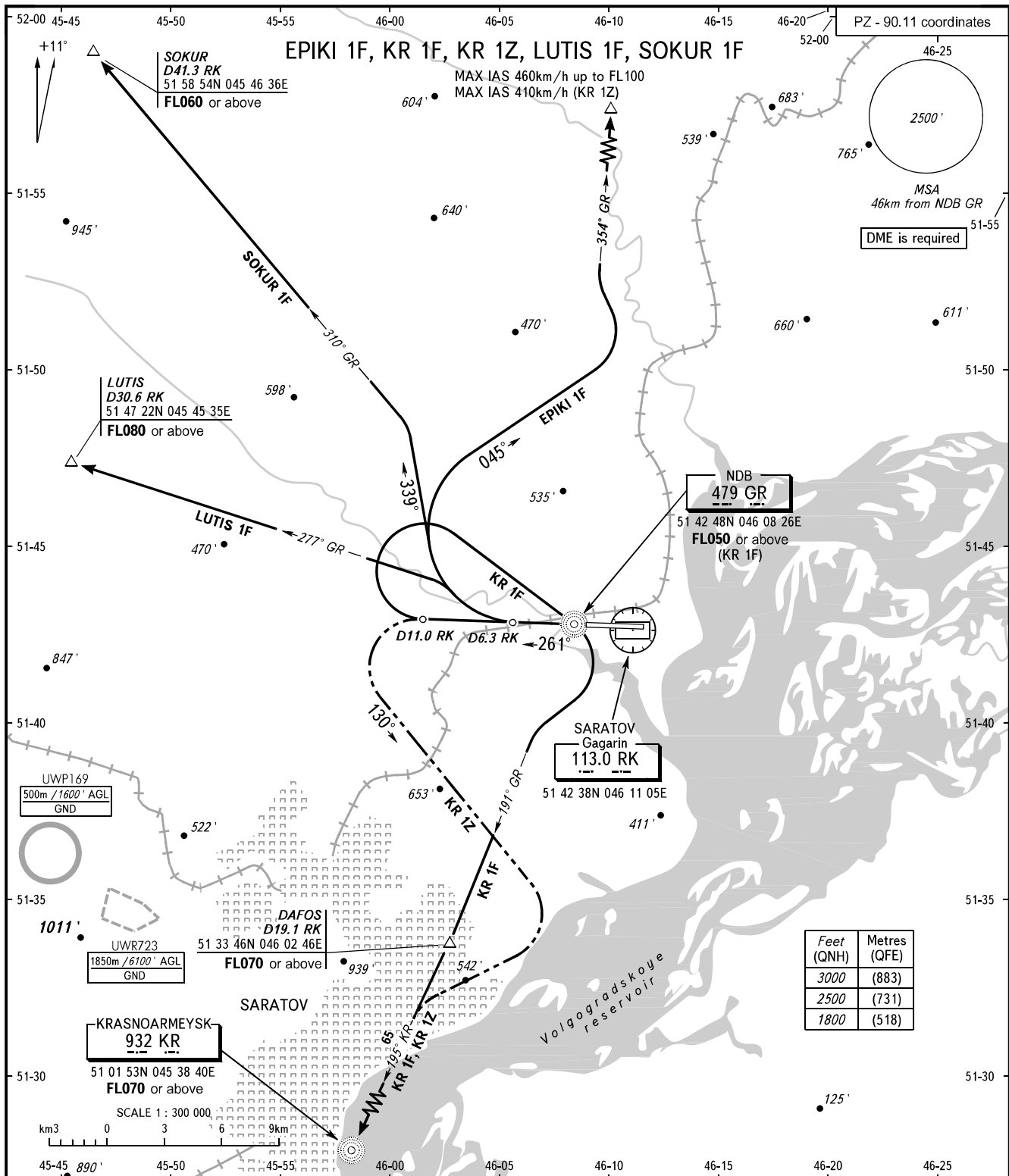


STANDARD DEPARTURE CHART
INSTRUMENT (SID) - ICAO

TRANSITION
ALTITUDE : 3000'

SARATOV, RUSSIA
GAGARIN
RWY 26



Feet (QNH)	Metres (QFE)
3000	(883)
2500	(731)
1800	(518)

GAGARIN APPROACH 121.625
GAGARIN RADAR 130.300
GAGARIN TOWER 122.850

- WARNING:**
- SID KR 1Z shall be executed by coordination with ATS unit.
 - If unable to execute SID LUTIS 1F, then proceed via SID LUTIS 1Z.
 - The minimum climb gradients are as follows (required due to the airspace structure):
 - 4.0% up to FL060 for SID EPIKI 1F;
 - 4.1% up to FL050 for SID KR 1F;
 - 8.5% up to FL080 for SID LUTIS 1F;
 - 4.3% up to FL060 for SID SOKUR 1F.

BEARINGS AND TRACKS ARE MAGNETIC
ALTITUDES AND ELEVATIONS IN FEET
DISTANCES IN KILOMETRES