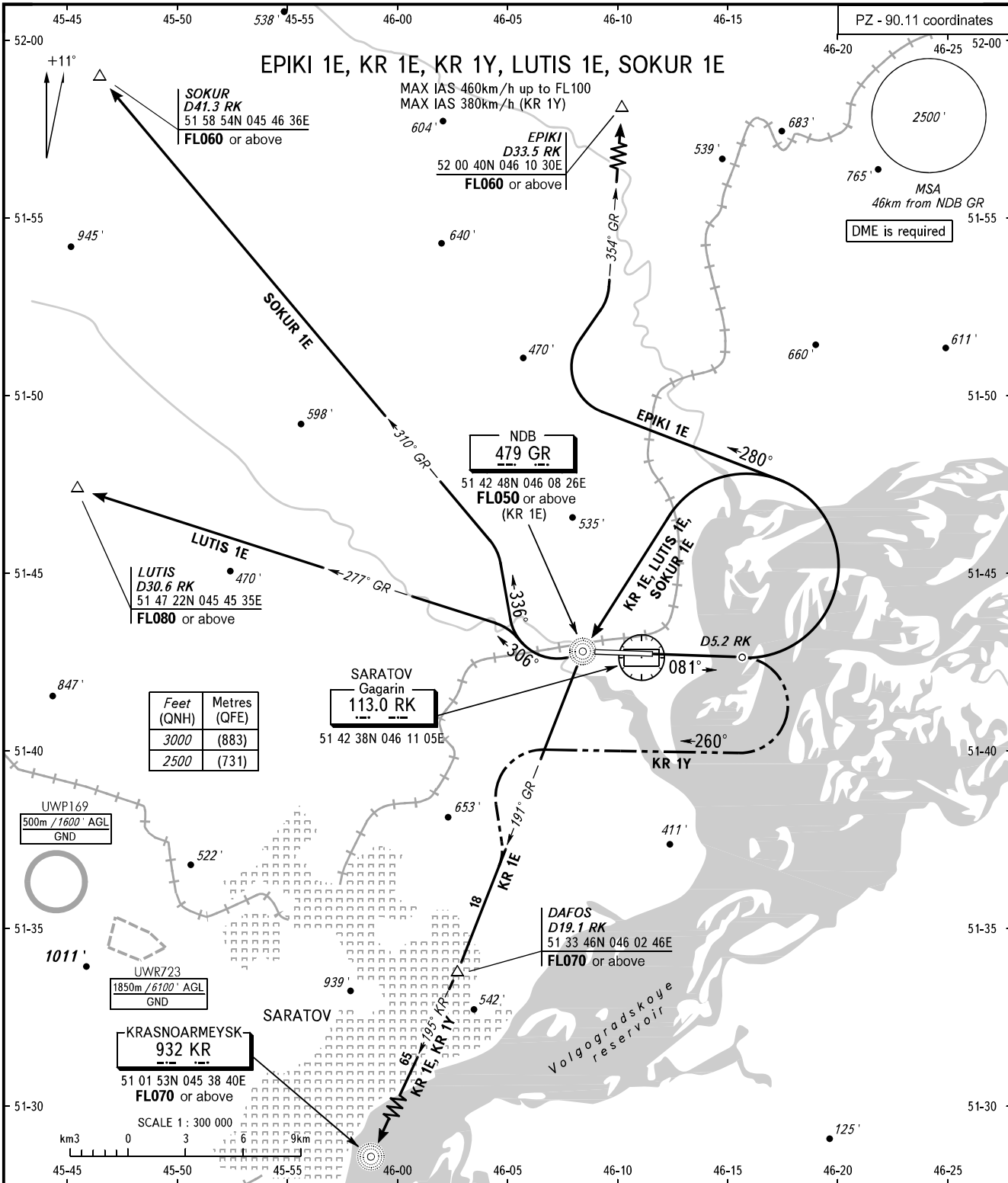


STANDARD DEPARTURE CHART
INSTRUMENT (SID) - ICAO

SARATOV, RUSSIA
GAGARIN
RWY 08

TRANSITION
ALTITUDE : 3000'



GAGARIN TOWER 122.850
GAGARIN RADAR 130.300
GAGARIN APPROACH 121.625

WARNING:

- SID KR 1Y shall be executed by coordination with ATS unit.
- The minimum climb gradients are as follows (required due to the airspace structure):
 - 3.7% up to FL060 for SID EPIKI 1E;
 - 3.6% up to FL050 for SID KR 1E;
 - 5.4% up to FL070 for SID KR 1Y;
 - 3.4% up to FL080 for SID LUTIS 1E.

CHANGE: New chart

BEARINGS AND TRACKS ARE MAGNETIC
ALTITUDES AND ELEVATIONS IN FEET
DISTANCES IN KILOMETRES