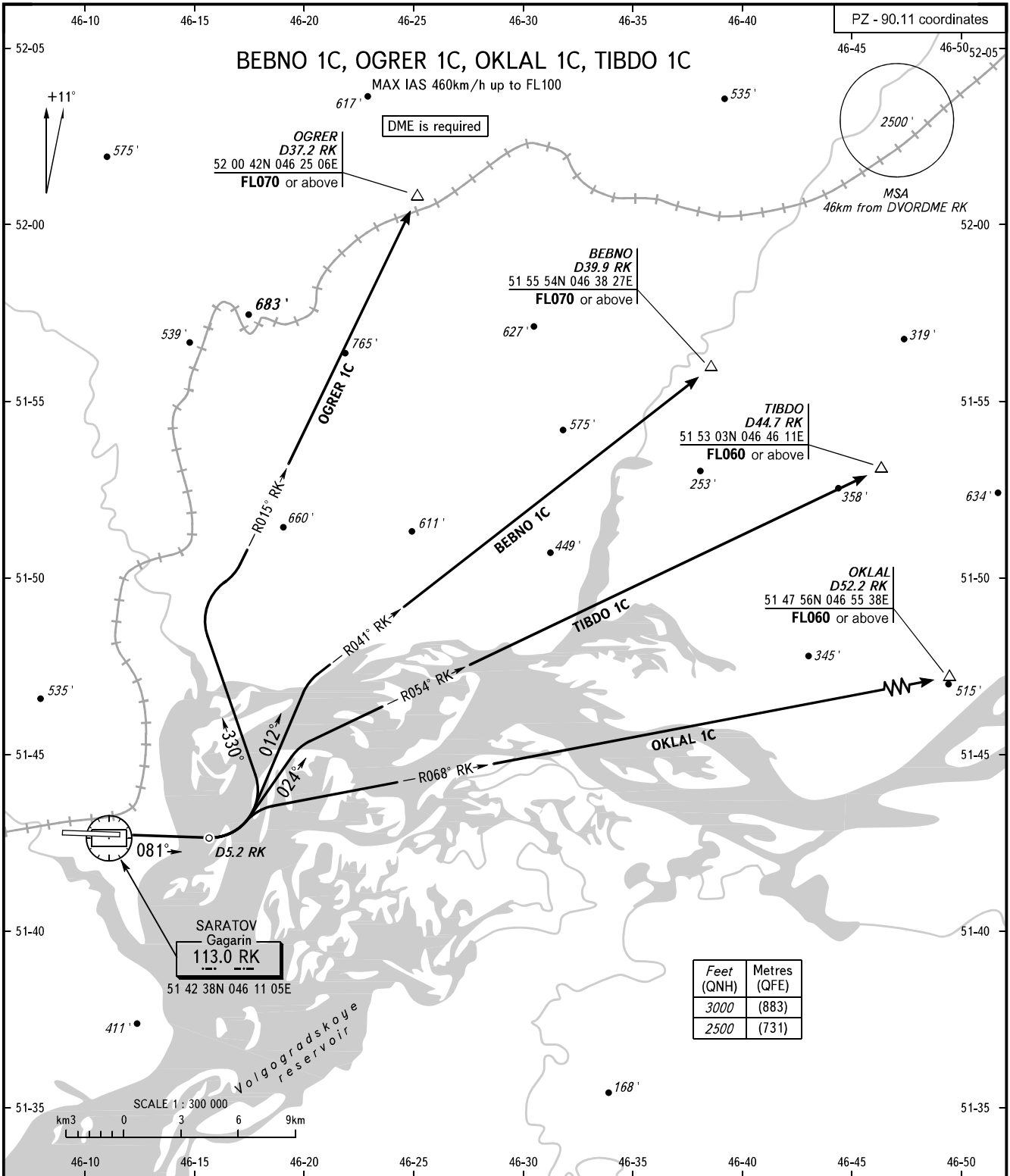


STANDARD DEPARTURE CHART
INSTRUMENT (SID) - ICAO

SARATOV, RUSSIA
GAGARIN
RWY 08

TRANSITION
ALTITUDE : 3000'



Feet (QNH)	Metres (QFE)
3000	(883)
2500	(731)

GAGARIN TOWER 122.850
GAGARIN RADAR 130.300
GAGARIN APPROACH 121.625

WARNING
The minimum climb gradients are as follows (required due to the airspace structure):
- 5.0% up to FL070 for SID BEBNO 1C;
- 4.7% up to FL070 for SID OGRER 1C;
- 3.5% up to FL060 for SID OKLAL 1C;
- 4.0% up to FL060 for SID TIBDO 1C.

BEARINGS AND TRACKS ARE MAGNETIC
ALTITUDES AND ELEVATIONS IN FEET
DISTANCES IN KILOMETRES

CHANGE: New chart