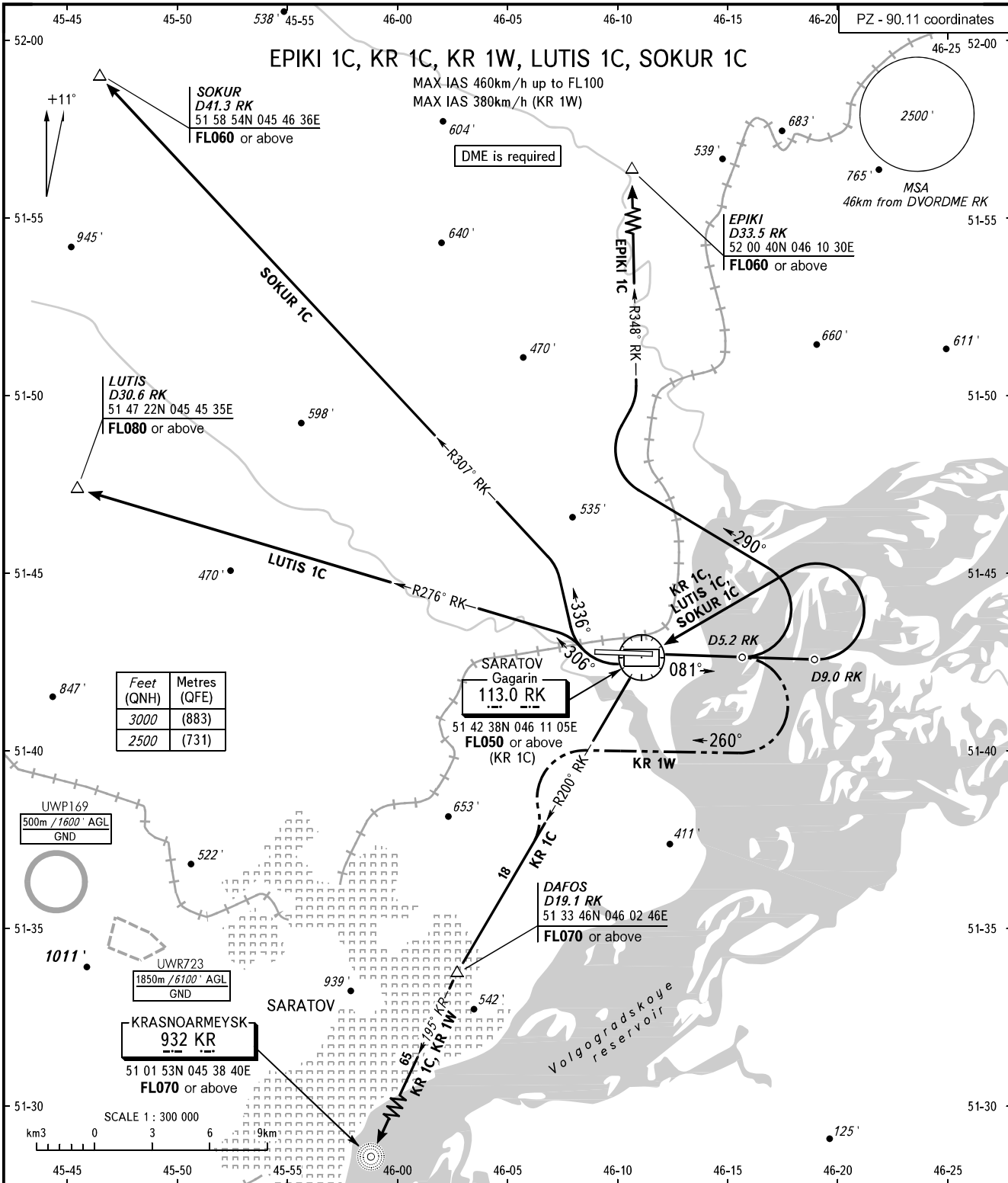


STANDARD DEPARTURE CHART  
INSTRUMENT (SID) - ICAO

SARATOV, RUSSIA  
GAGARIN  
RWY 08

TRANSITION  
ALTITUDE : 3000'



Feet (QNH)	Metres (QFE)
3000	(883)
2500	(731)

GAGARIN TOWER 122.850  
GAGARIN RADAR 130.300  
GAGARIN APPROACH 121.625

**WARNING:**  
1. SID KR 1W shall be executed by coordination with ATS unit.  
2. The minimum climb gradients are as follows (required due to the airspace structure):  
- 3.5% up to FL080 for SID LUTIS 1C;  
- 3.7% up to FL060 for SID EPIKI 1C;  
- 4.1% up to FL050 for SID KR 1C;  
- 5.4% up to FL070 for SID KR 1W.

BEARINGS AND TRACKS ARE MAGNETIC  
ALTITUDES AND ELEVATIONS IN FEET  
DISTANCES IN KILOMETRES

CHANGE: New chart