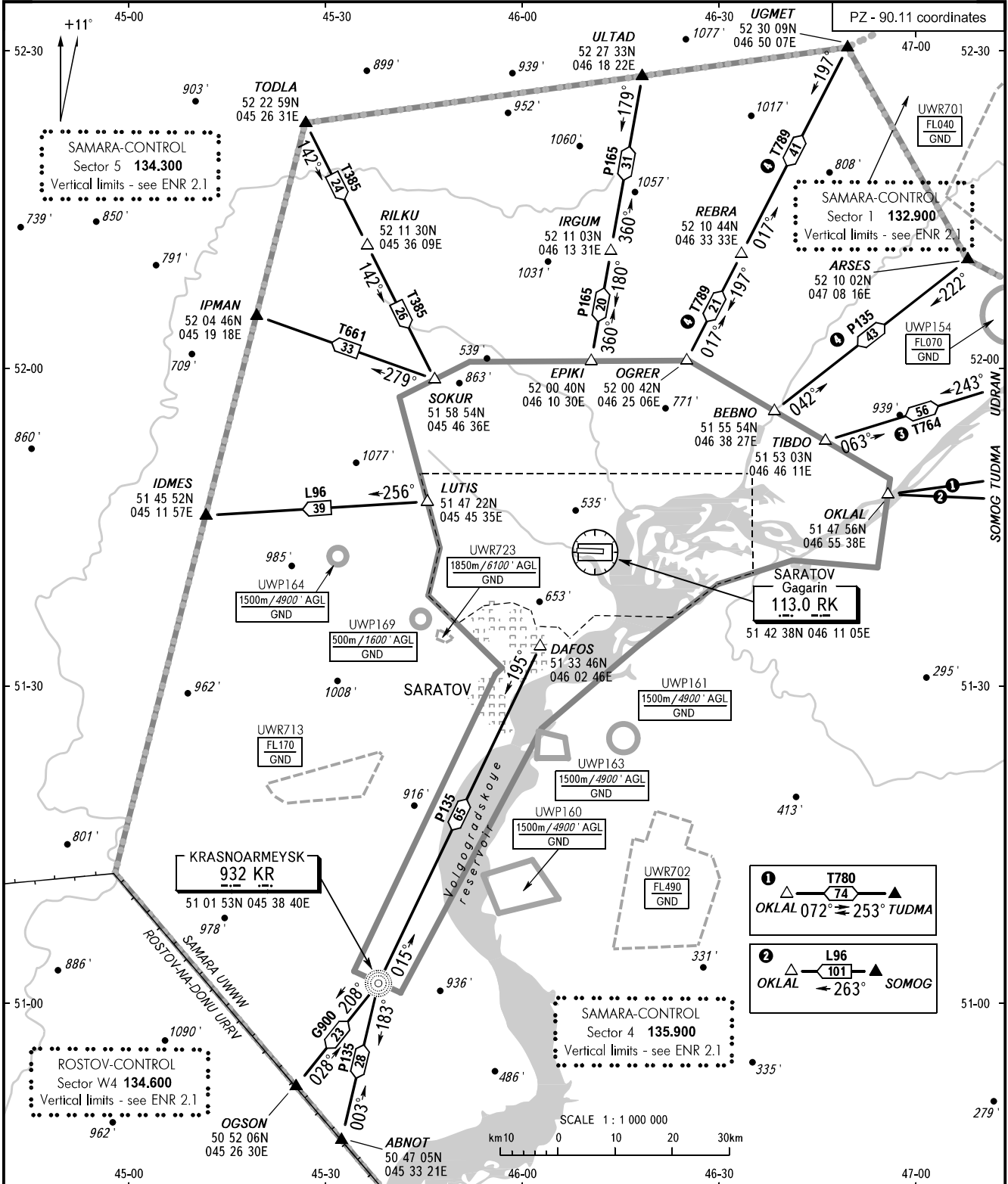


AREA CHART - ICAO

ARRIVAL, DEPARTURE  
AND TRANSIT ROUTES

SARATOV, RUSSIA

GAGARIN



③ FL060-FL160 are AVBL on co-ordination with ATS unit.  
④ FL070-FL170 are AVBL on co-ordination with ATS unit.

BEARINGS AND TRACKS ARE MAGNETIC  
ALTITUDES AND ELEVATIONS IN FEET  
DISTANCES IN KILOMETRES

CHANGE: New chart