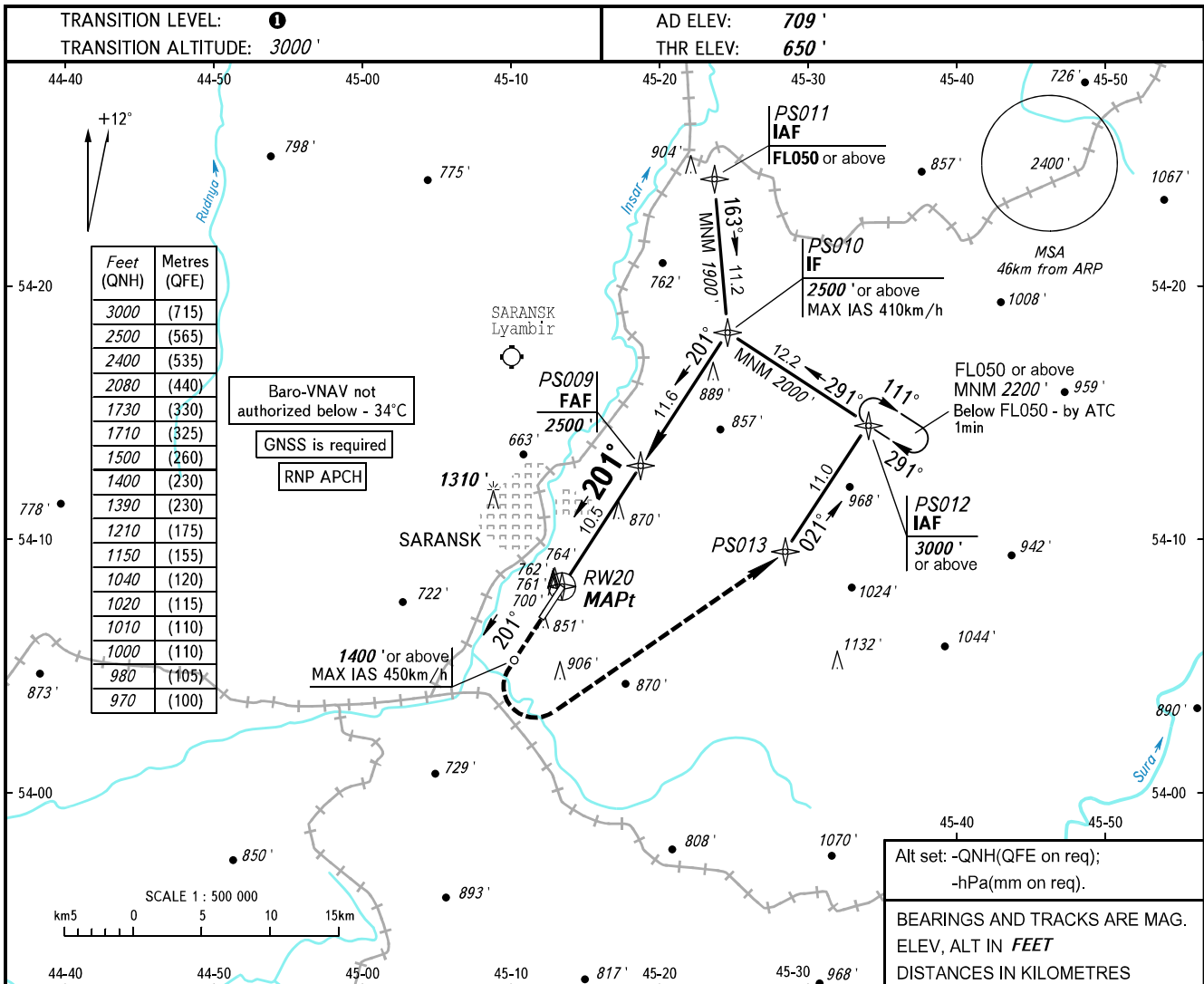


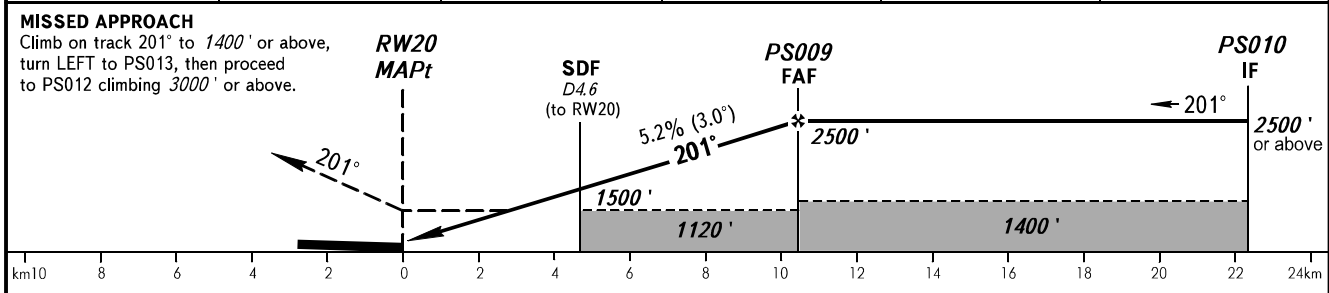
**INSTRUMENT
APPROACH
CHART - ICAO**

TOWER 118.100

**SARANSK, RUSSIA
SARANSK
RNAV RWY 20**



DIST RW20	2.0	4.0	6.0	8.0	10.5
ALTITUDE	1040'	1390'	1730'	2080'	2500'



OCA(H)		A	B	C	D						
Straight-in	LNAV	1010' (360')	1010' (360')	1010' (360')	1010' (360')						
	LNAV/VNAV	970' (320')	980' (330')	1000' (350')	1020' (370')						
Approach											
Circling		1150' (440')	1210' (500')	1710' (1000')	1710' (1000')						
GROUND SPEED		km/h	150	180	210	240	270	300	330	360	390
RATE OF DESCENT		m/s	2.2	2.6	3.0	3.5	3.9	4.3	4.8	5.2	5.6
		ft/min	427	512	597	682	768	853	938	1024	1109

① TRANSITION LEVEL:
 - FL040 when QNH is 1013 hPa (760mm mercury column) or above;
 - FL050 when QNH is 977 hPa (733mm mercury column) or above, but less than 1013 hPa (760mm mercury column);
 - FL060 when QNH is less than 977 hPa (733mm mercury column).

NOTE
 MAPt at RW20.
 Timing not authorized for defining MAPt.