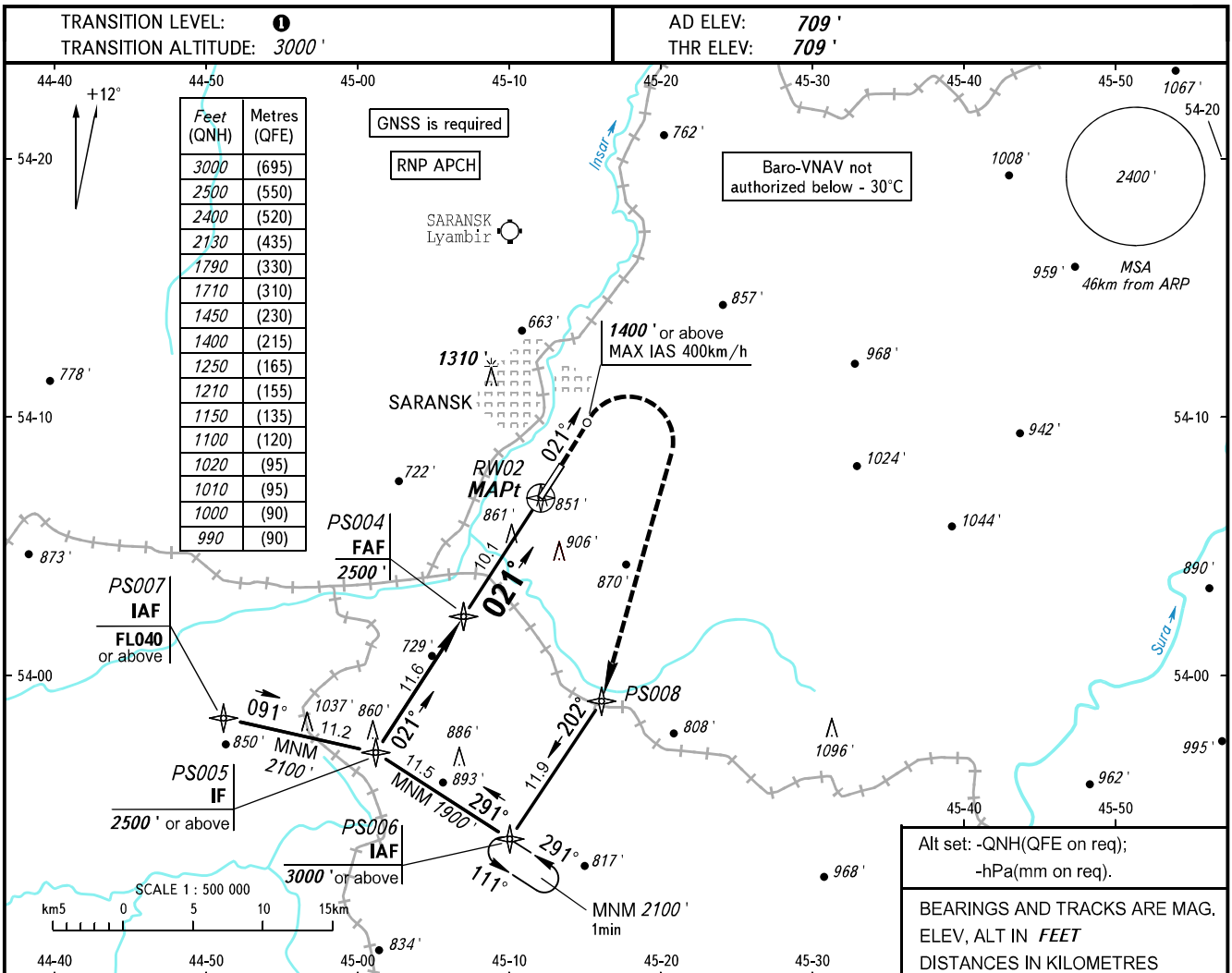


**INSTRUMENT
APPROACH
CHART - ICAO**

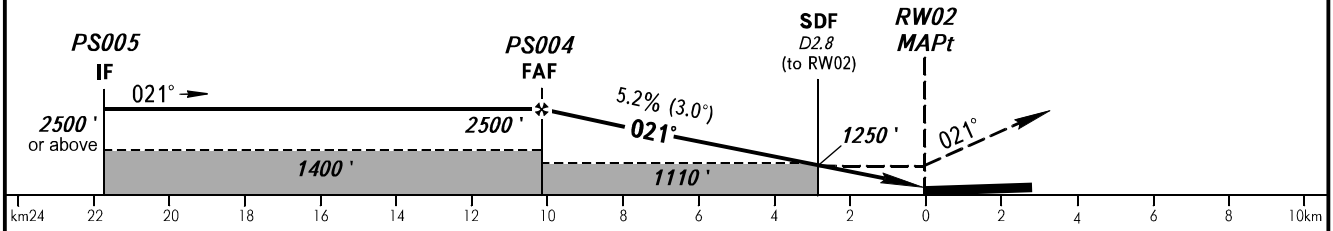
TOWER **118.100**

SARANSK, RUSSIA
SARANSK
RNAV RWY 02



DIST RW02	10.2	8.0	6.0	4.0	2.0
ALTITUDE	2500'	2130'	1790'	1450'	1100'

MISSED APPROACH
Climb on track 021° to 1400' or above, turn RIGHT to PS008, then proceed to PS006 climbing 3000' or above.



OCA(H)		A	B	C	D
Straight-in	RNAV	1100' (390')	1100' (390')	1100' (390')	1100' (390')
	RNAV/VNAV	990' (280')	1000' (290')	1010' (300')	1020' (310')
Circling		1150' (440')	1210' (500')	1710' (1000')	1710' (1000')

1 TRANSITION LEVEL:
- FL040 when QNH is 1013 hPa (760mm mercury column) or above;
- FL050 when QNH is 977 hPa (733mm mercury column) or above, but less than 1013 hPa (760mm mercury column);
- FL060 when QNH is less than 977 hPa (733mm mercury column).

NOTE
MAPt at RW02.
Timing not authorized for defining MAPt.

GROUND SPEED	km/h	150	180	210	240	270	300	330	360	390
	RATE OF DESCENT	m/s	2.2	2.6	3.0	3.5	3.9	4.3	4.8	5.2
	ft/min	427	512	597	682	768	853	938	1024	1109

CHANGE: NIL