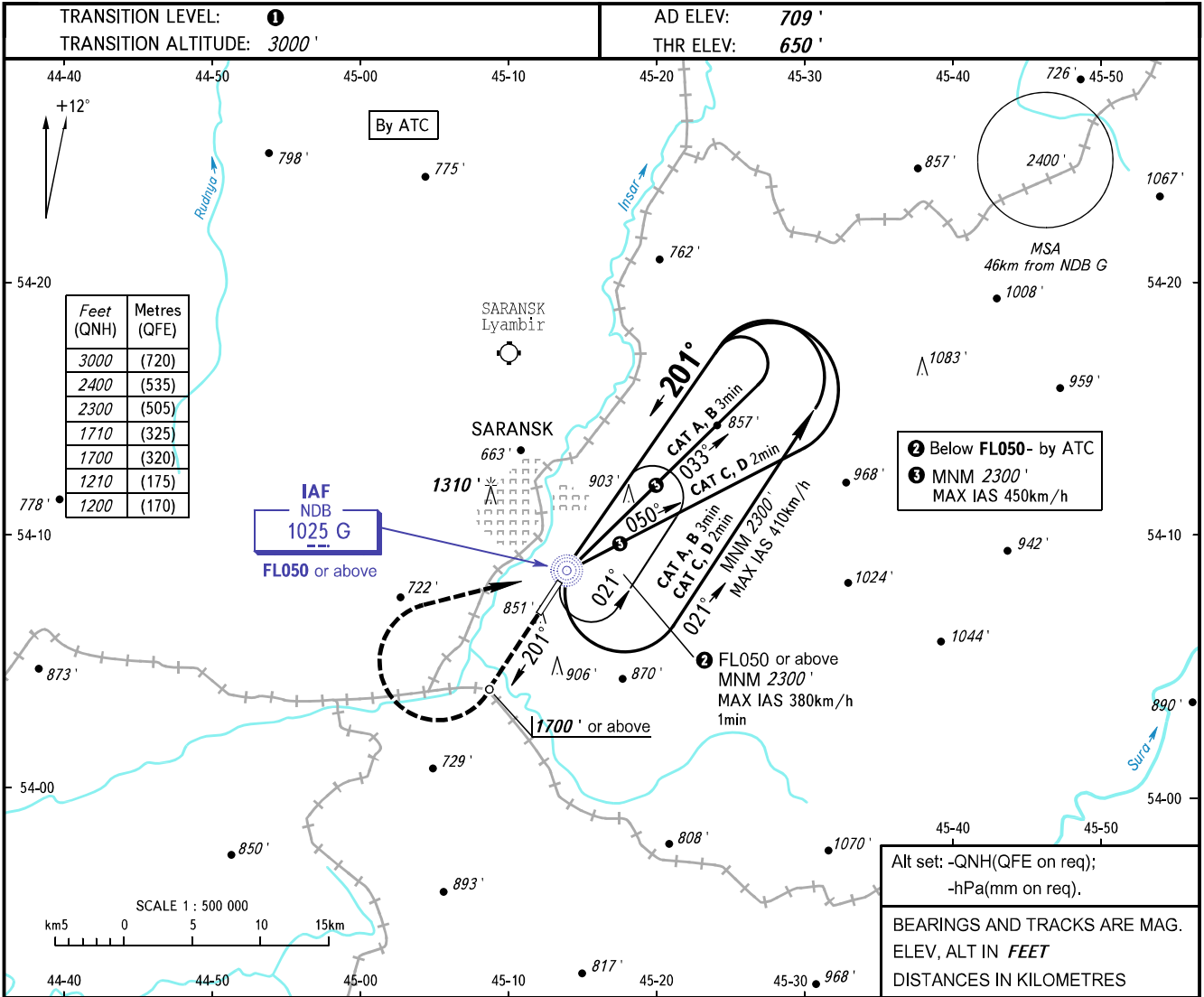


**INSTRUMENT  
APPROACH  
CHART - ICAO**

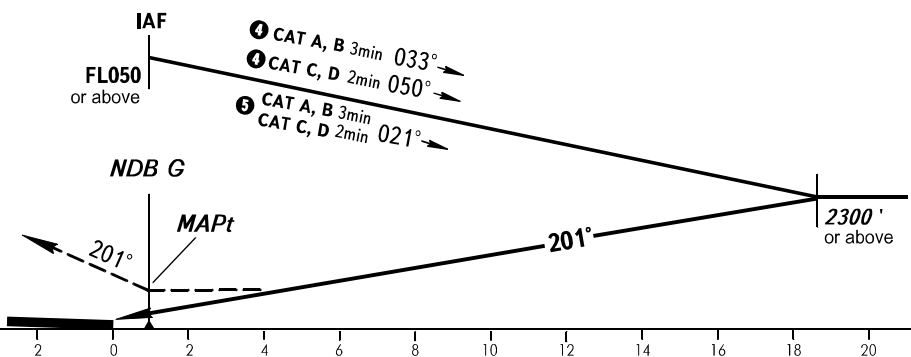
TOWER **118.100**

**SARANSK, RUSSIA**  
SARANSK  
NDB Y RWY 20



**MISSED APPROACH**  
Climb on track 201° 1700' or above,  
turn RIGHT to NDB G  
climbing 2300' or above.

- 4 For base turn
- 5 For racetrack



OCA(H)	A	B	C	D
Straight-in	1200' (550')	1200' (550')	1200' (550')	1200' (550')
Approach				
Circling	1200' (550')	1210' (500')	1710' (1000')	1710' (1000')

**1** TRANSITION LEVEL:  
- FL040 when QNH is 1013 hPa (760mm mercury column) or above;  
- FL050 when QNH is 977 hPa (733mm mercury column) or above, but less than 1013 hPa (760mm mercury column);  
- FL060 when QNH is less than 977 hPa (733mm mercury column).

**NOTE:**  
1. Turn before passing MAPt is PROHIBITED.  
2. MAPt at NDB G. Timing not authorized for defining MAPt.

CHANGE: New chart