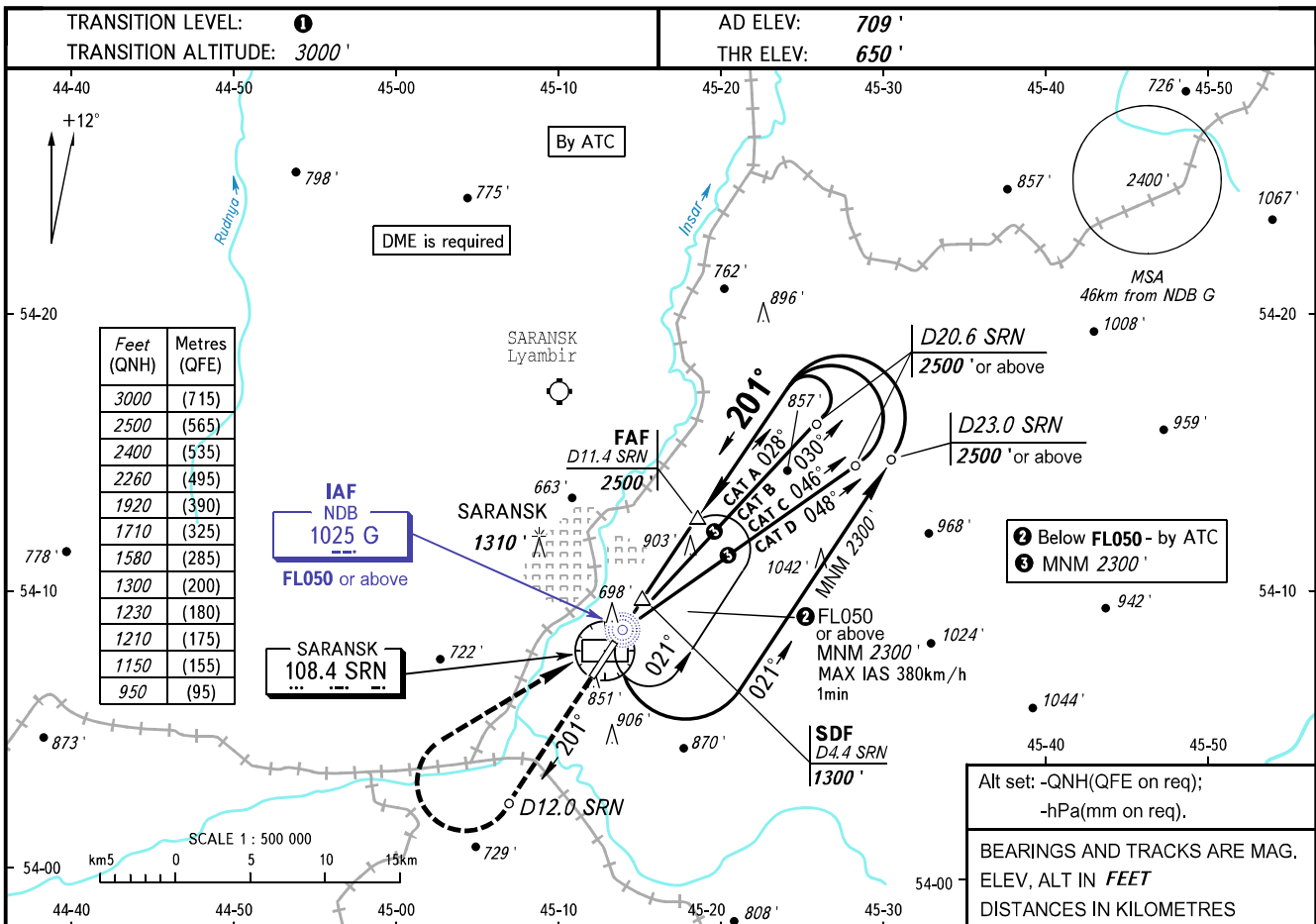


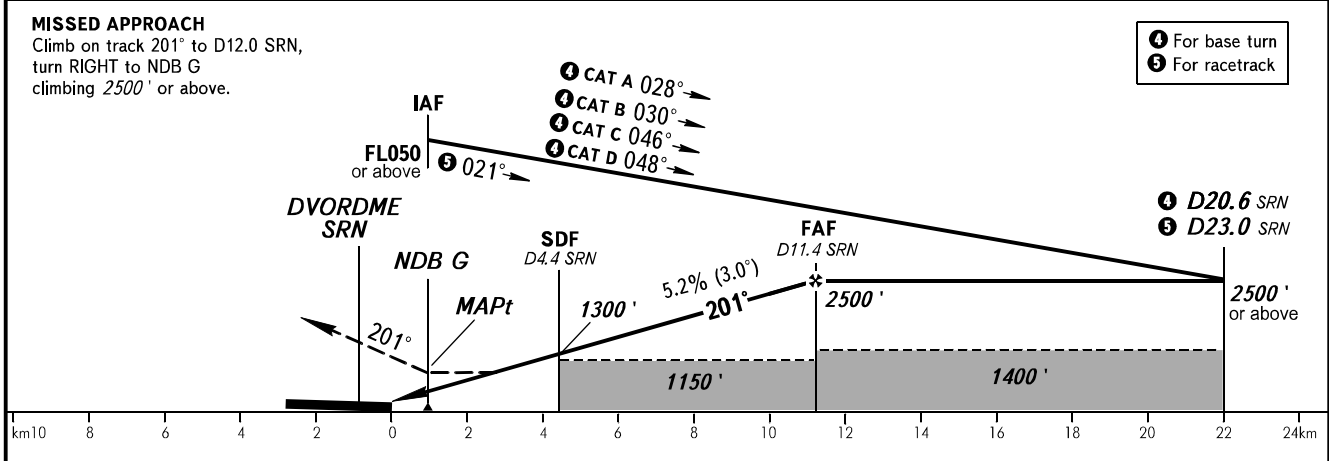
**INSTRUMENT
APPROACH
CHART - ICAO**

TOWER 118.100

SARANSK, RUSSIA
SARANSK
NDB Z RWY 20



DME SRN	4.0	6.0	8.0	10.0	11.4
ALTITUDE	1230'	1580'	1920'	2260'	2500'



OCA(H)		A	B	C	D	TRANSITION LEVEL:						
Straight-in Approach	With SDF	950' (300')	950' (300')	950' (300')	950' (300')	- FL040 when QNH is 1013 hPa (760mm mercury column) or above;						
	WO SDF	1150' (500')	1150' (500')	1150' (500')	1150' (500')	- FL050 when QNH is 977 hPa (733mm mercury column) or above, but less than 1013 hPa (760mm mercury column);						
Circling		1150' (440')	1210' (500')	1710' (1000')	1710' (1000')	- FL060 when QNH is less than 977 hPa (733mm mercury column).						
GROUND SPEED		km/h		150	180	210	240	270	300	330	360	390
RATE OF DESCENT		m/s		2.2	2.6	3.0	3.5	3.9	4.3	4.8	5.2	5.6
		ft/min		427	512	597	682	768	853	938	1024	1109

NOTE: MAPt at NDB G. Timing not authorized for defining MAPt.