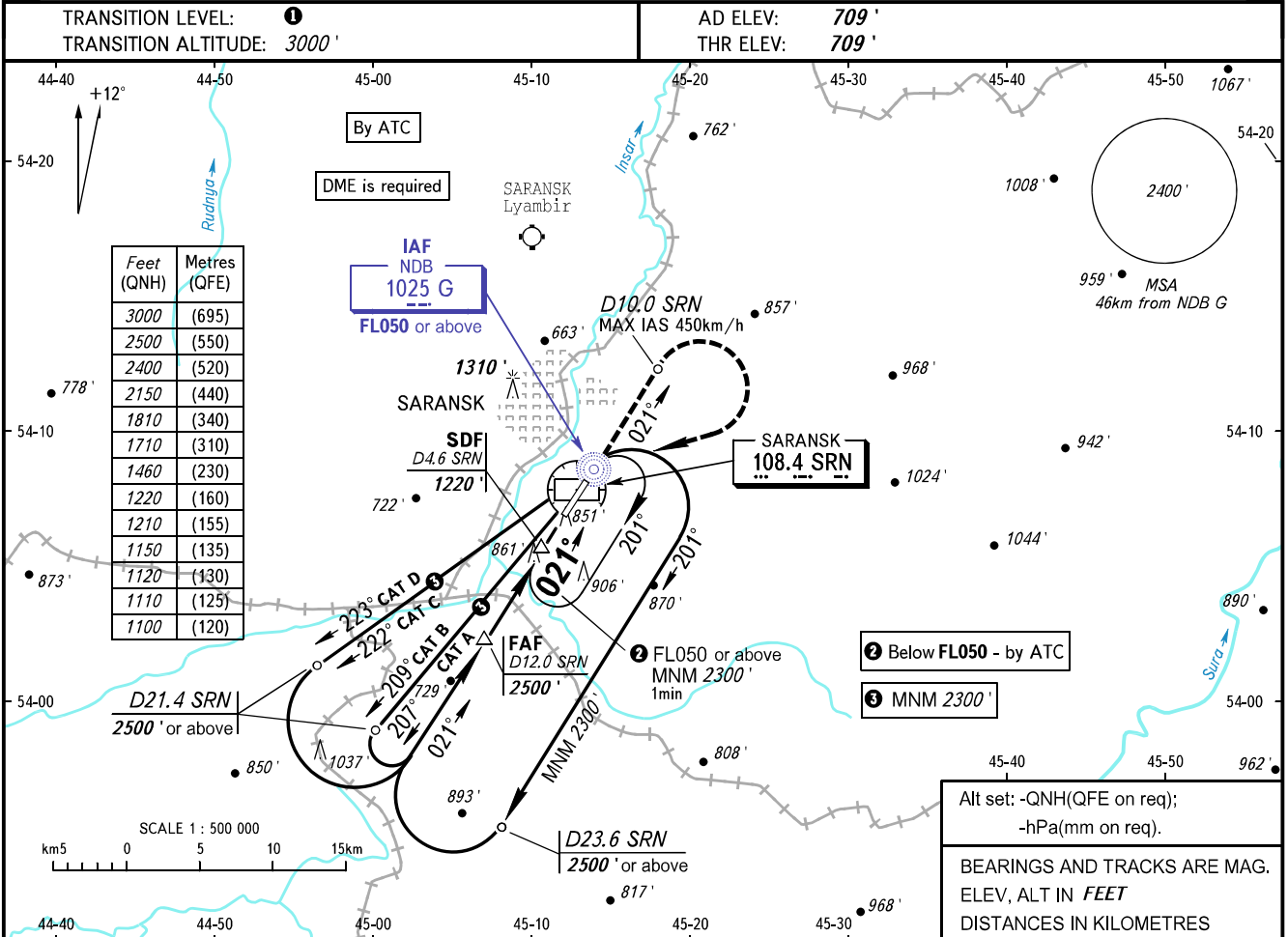


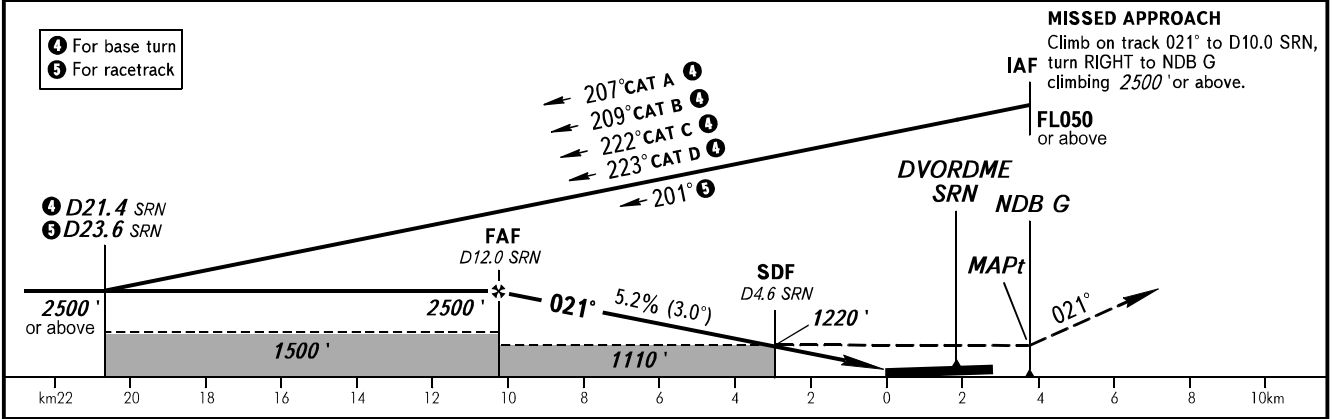
**INSTRUMENT
APPROACH
CHART - ICAO**

TOWER **118.100**

SARANSK, RUSSIA
SARANSK
NDB RWY 02



DME SRN	12.0	10.0	8.0	6.0	4.0
ALTITUDE	2500'	2150'	1810'	1460'	1120'



OCA(H)		A	B	C	D	1 TRANSITION LEVEL: - FL040 when QNH is 1013 hPa (760mm mercury column) or above; - FL050 when QNH is 977 hPa (733mm mercury column) or above, but less than 1013 hPa (760mm mercury column); - FL060 when QNH is less than 977 hPa (733mm mercury column). NOTE: MAPt at NDB G. Timing not authorized for defining MAPt.
Straight-in Approach	With SDF	1100' (390')	1100' (390')	1100' (390')	1100' (390')	
	WO SDF	1110' (400')	1110' (400')	1110' (400')	1110' (400')	
Circling		1150' (440')	1210' (500')	1710' (1000')	1710' (1000')	

GROUND SPEED	km/h	150	180	210	240	270	300	330	360	390
	m/s	2.2	2.6	3.0	3.5	3.9	4.3	4.8	5.2	5.6
RATE OF DESCENT	ft/min	427	512	597	682	768	853	938	1024	1109

CHANGE: New chart