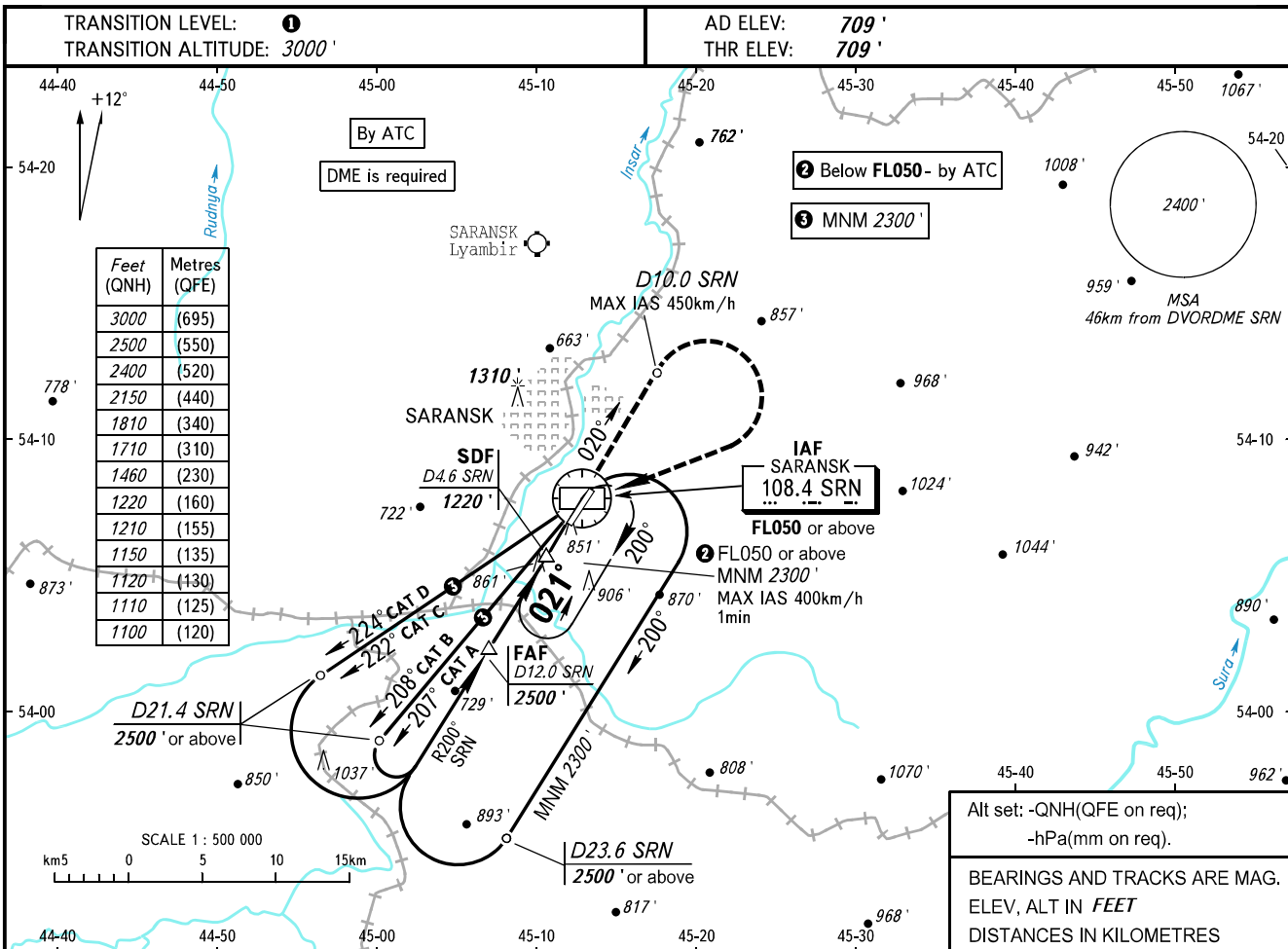


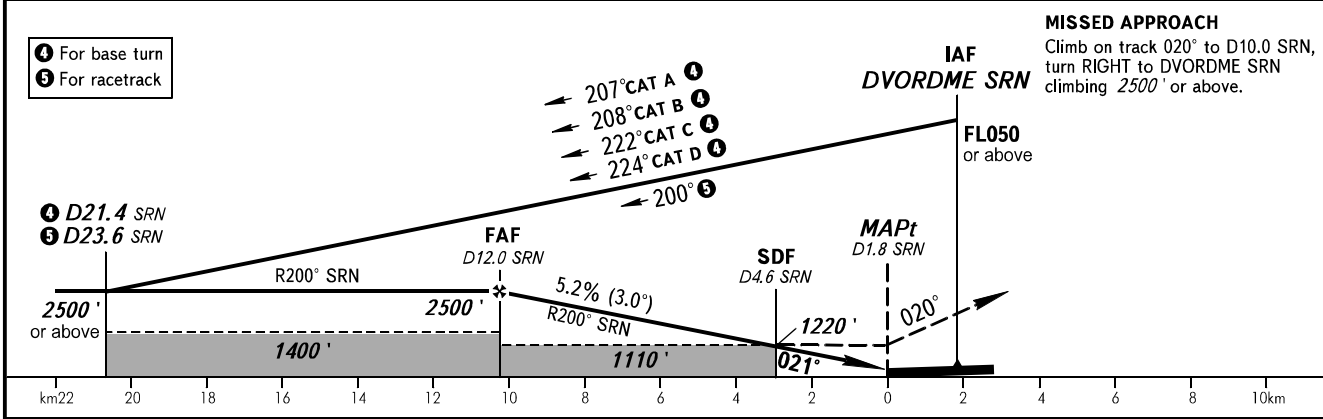
**INSTRUMENT
APPROACH
CHART - ICAO**

TOWER **118.100**

SARANSK, RUSSIA
SARANSK
DVOR RWY 02



DME SRN	12.0	10.0	8.0	6.0	4.0
ALTITUDE	2500'	2150'	1810'	1460'	1120'



OCA(H)		A	B	C	D	① TRANSITION LEVEL:					
Straight-in Approach	With SDF	1100' (390')	1100' (390')	1100' (390')	1100' (390')	- FL040 when QNH is 1013 hPa (760mm mercury column) or above;					
	WO SDF	1110' (400')	1110' (400')	1110' (400')	1110' (400')	- FL050 when QNH is 977 hPa (733mm mercury column) or above, but less than 1013 hPa (760mm mercury column);					
Circling		1150' (440')	1210' (500')	1710' (1000')	1710' (1000')	- FL060 when QNH is less than 977 hPa (733mm mercury column).					
GROUND SPEED		km/h	150	180	210	240	270	300	330	360	390
RATE OF DESCENT		m/s	2.2	2.6	3.0	3.5	3.9	4.3	4.8	5.2	5.6
		ft/min	427	512	597	682	768	853	938	1024	1109

NOTE:
1. Final approach track is offset by 1° from the RWY centre line.
2. MAPt at D1.8 SRN. Timing not authorized for defining MAPt.

CHANGE: New chart