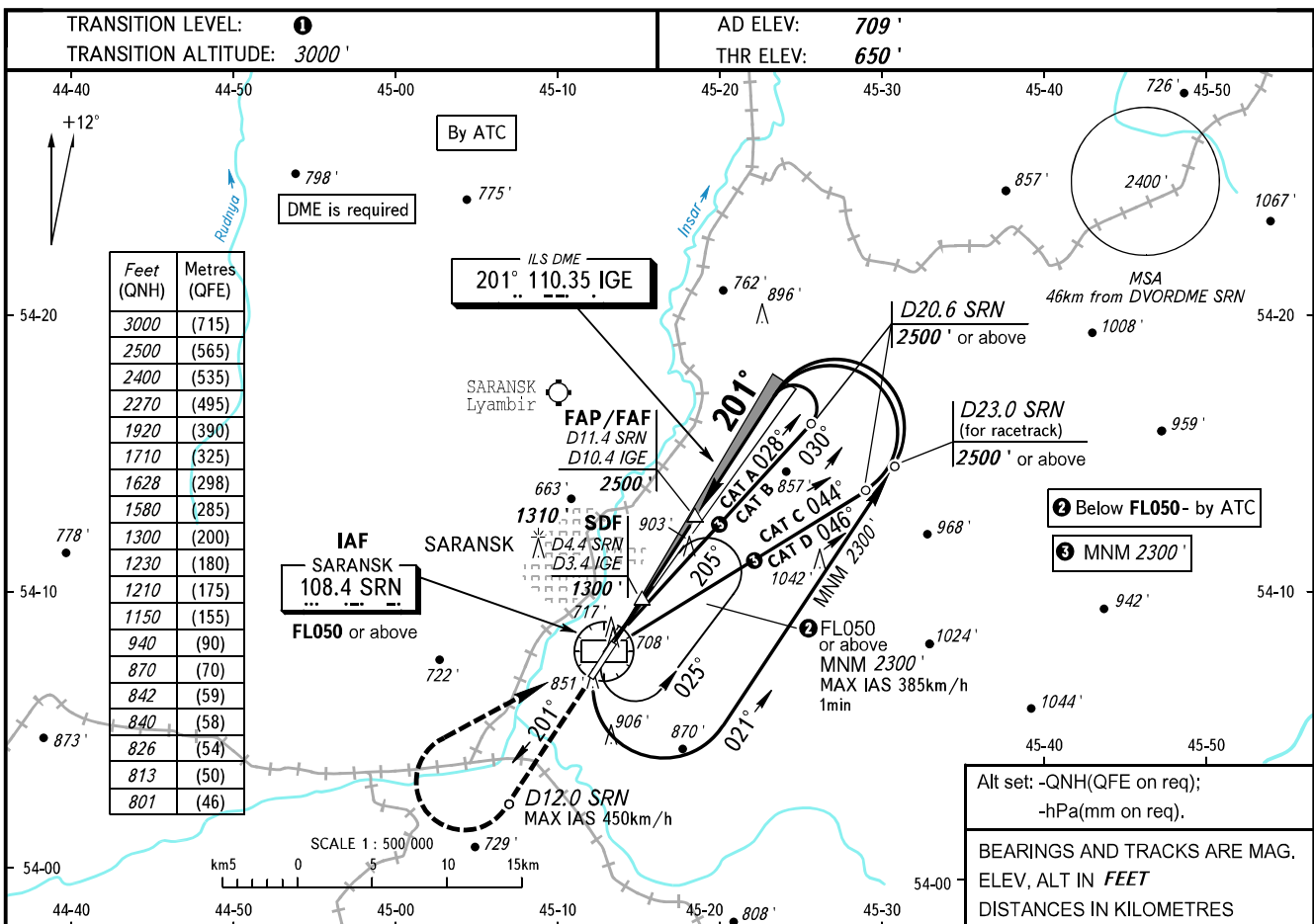


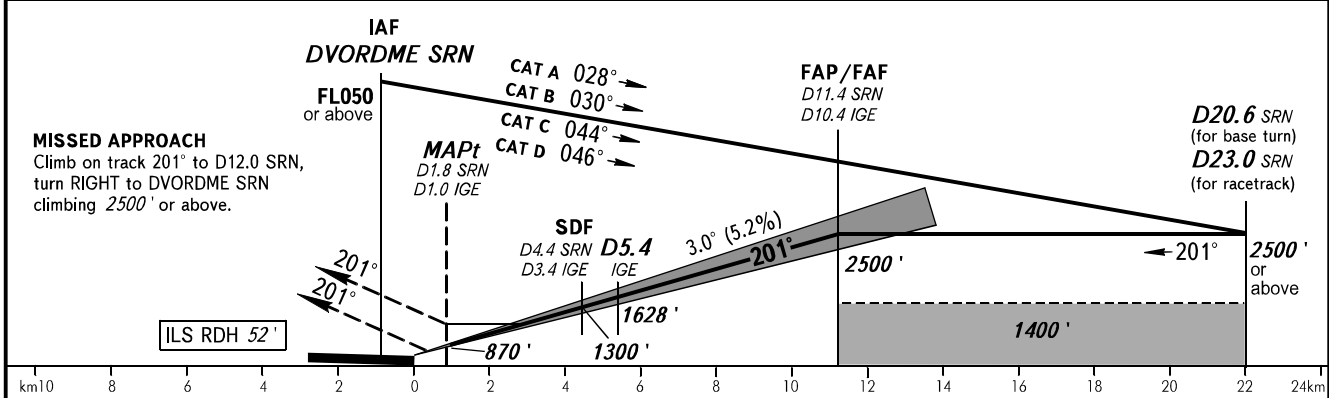
**INSTRUMENT
APPROACH
CHART - ICAO**

TOWER 118.100

**SARANSK, RUSSIA
SARANSK
ILS Y CAT I, LOC Y RWY 20**



DME SRN	4.0	6.0	8.0	10.0	11.4
ALTITUDE	1230'	1580'	1920'	2270'	2500'



OCA(H)		A	B	C	D	DL	1 TRANSITION LEVEL: - FL040 when QNH is 1013 hPa (760mm mercury column) or above; - FL050 when QNH is 977 hPa (733mm mercury column) or above, but less than 1013 hPa (760mm mercury column); - FL060 when QNH is less than 977 hPa (733mm mercury column). NOTE: 1. DME IGE reads zero at RWY 20 THR. 2. Timing not authorized for defining MAPt.						
CAT I		801' (151')	813' (163')	826' (176')	840' (190')	842' (192')							
Straight-in Approach	LOC	With SDF	940' (290')	940' (290')	940' (290')	940' (290')	940' (290')						
	LOC	WO SDF	1150' (500')	1150' (500')	1150' (500')	1150' (500')	1150' (500')						
Circling			1150' (440')	1210' (500')	1710' (1000')	1710' (1000')	1710' (1000')						
GROUND SPEED		km/h	150	180	210	240	270	300	330	360	390		
RATE OF DESCENT		m/s	2.2	2.6	3.0	3.5	3.9	4.3	4.8	5.2	5.6		
		ft/min	427	512	597	682	768	853	938	1024	1109		