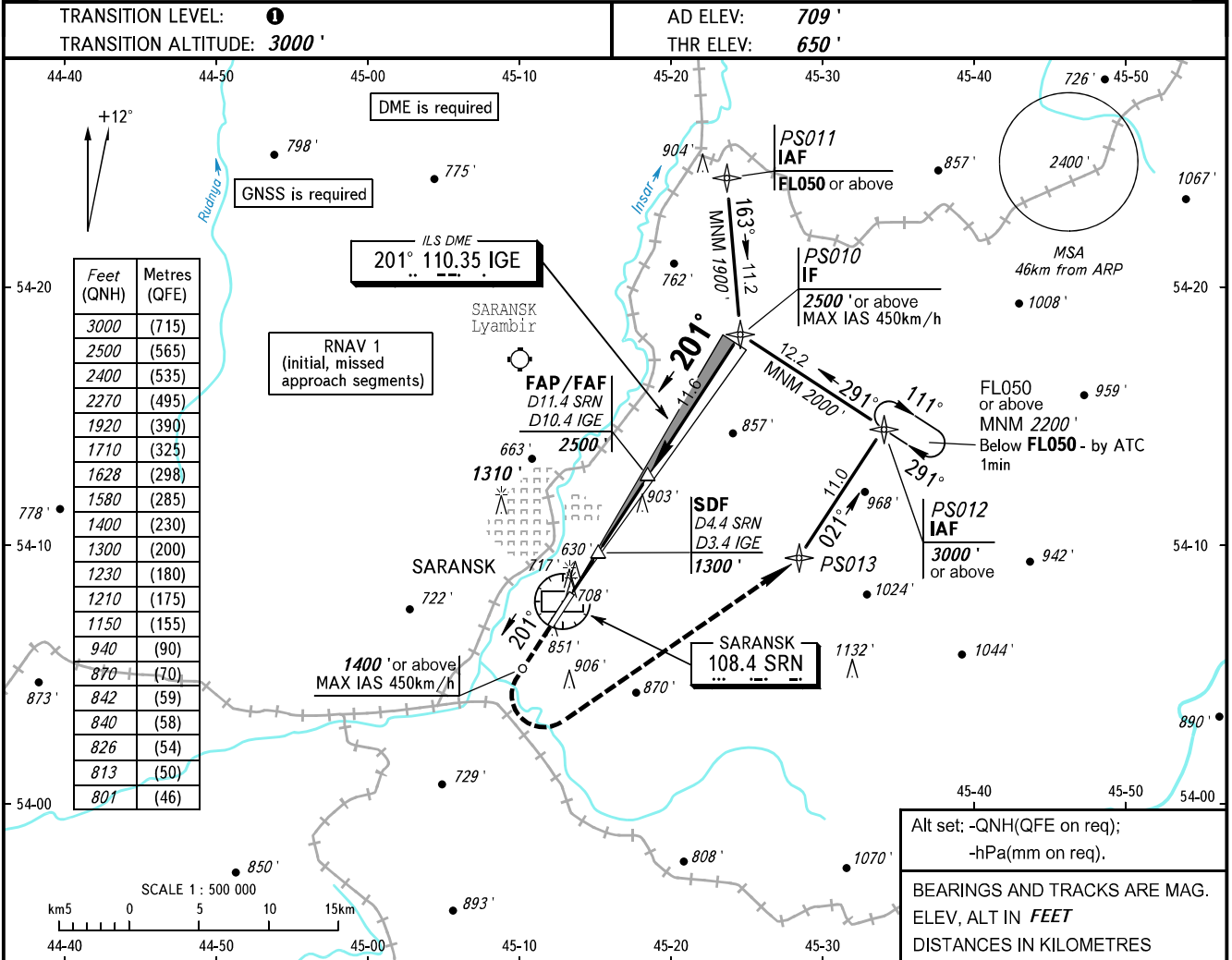


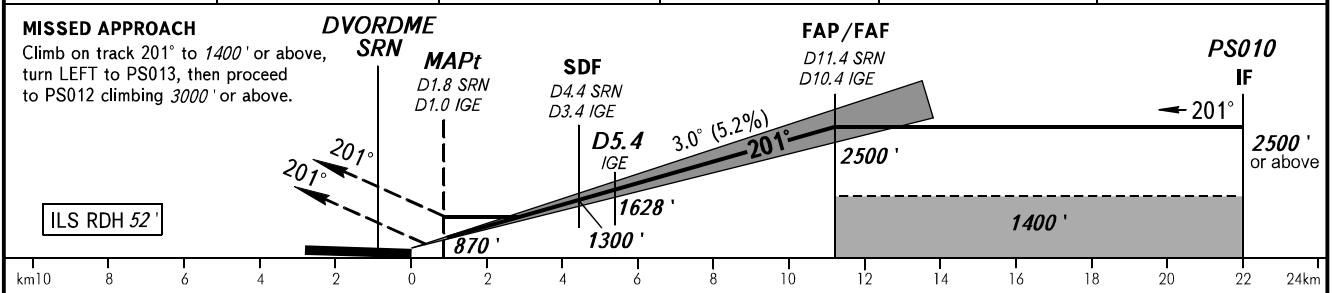
INSTRUMENT  
APPROACH  
CHART - ICAO

TOWER 118.100

SARANSK, RUSSIA  
SARANSK  
ILS Z CAT I, LOC Z RWY 20



DME SRN	4.0	6.0	8.0	10.0	11.4
ALTITUDE	1230'	1580'	1920'	2270'	2500'



OCA(H)		A	B	C	D	DL	<b>TRANSITION LEVEL:</b> - FL040 when QNH is 1013 hPa (760mm mercury column) or above; - FL050 when QNH is 977 hPa (733mm mercury column) or above, but less than 1013 hPa (760mm mercury column); - FL060 when QNH is less than 977 hPa (733mm mercury column).  <b>NOTE:</b> 1. DME IGE reads zero at RWY 20 THR. 2. Timing not authorized for defining MAPt.				
Straight-in Approach	<b>CAT I</b>	801' (151')	813' (163')	826' (176')	840' (190')	842' (192')					
	<b>LOC</b>	<b>With SDF</b>	940' (290')	940' (290')	940' (290')	940' (290')		940' (290')			
		<b>WO SDF</b>	1150' (500')	1150' (500')	1150' (500')	1150' (500')		1150' (500')			
Circling		1150' (440')	1210' (500')	1710' (1000')	1710' (1000')	1710' (1000')					
GROUND SPEED		km/h	150	180	210	240	270	300	330	360	390
RATE OF DESCENT		m/s	2.2	2.6	3.0	3.5	3.9	4.3	4.8	5.2	5.6
		ft/min	427	512	597	682	768	853	938	1024	1109

CHANGE: New chart