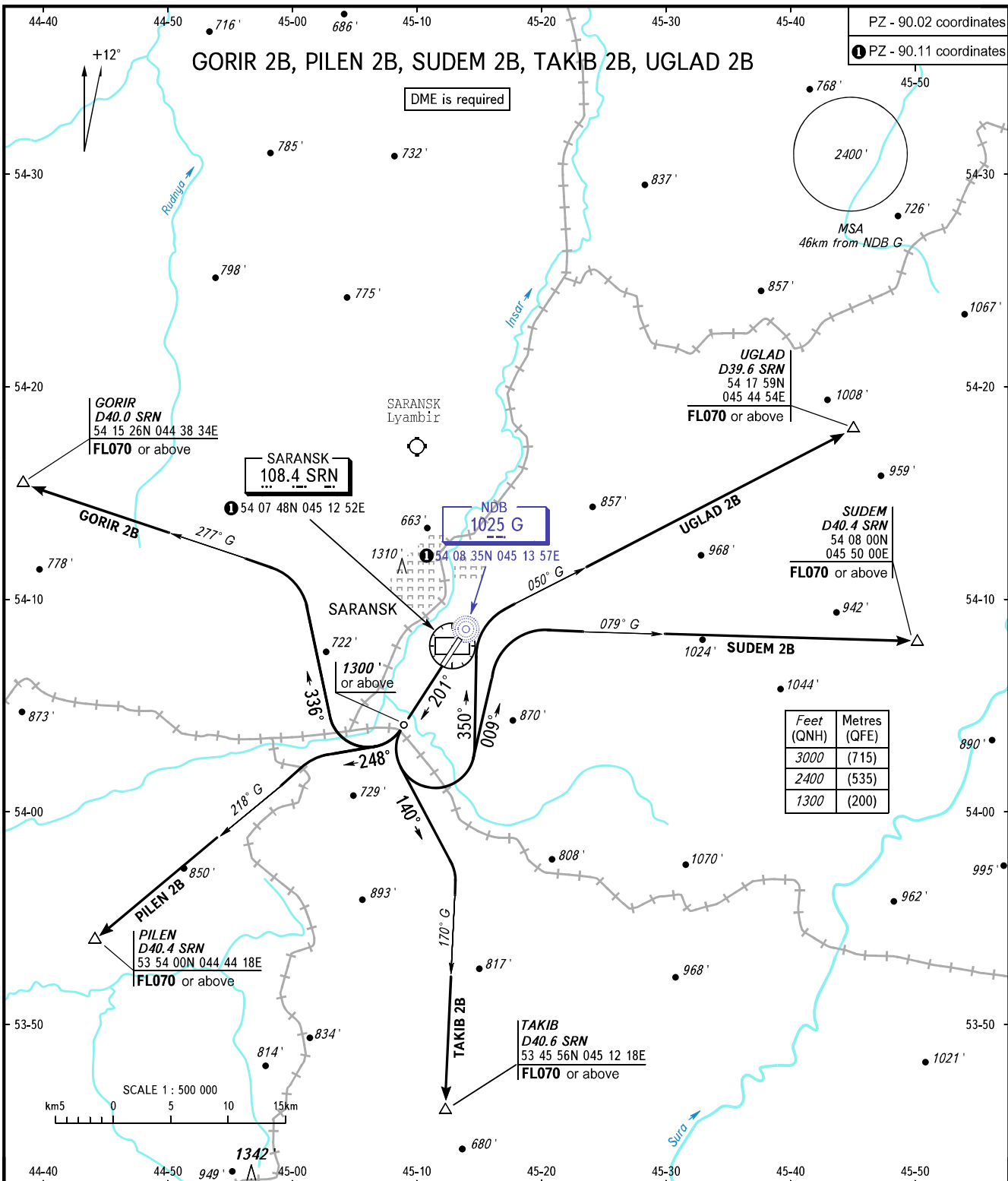


STANDARD DEPARTURE CHART
INSTRUMENT (SID) - ICAO

TRANSITION
ALTITUDE: 3000'

SARANSK, RUSSIA
SARANSK
RWY 20



TOWER 118.100

WARNING

The minimum climb gradients are as follows (required due to the airspace limitation):

- 4.1% up to FL070 for SID GORIR 2B;
- 5.0% up to FL070 for SID PILEN 2B;
- 3.4% up to FL070 for SID SUDEM 2B;
- 4.8% up to FL070 for SID TAKIB 2B.

BEARINGS AND TRACKS ARE MAGNETIC
ALTITUDES AND ELEVATIONS IN FEET
DISTANCES IN KILOMETRES