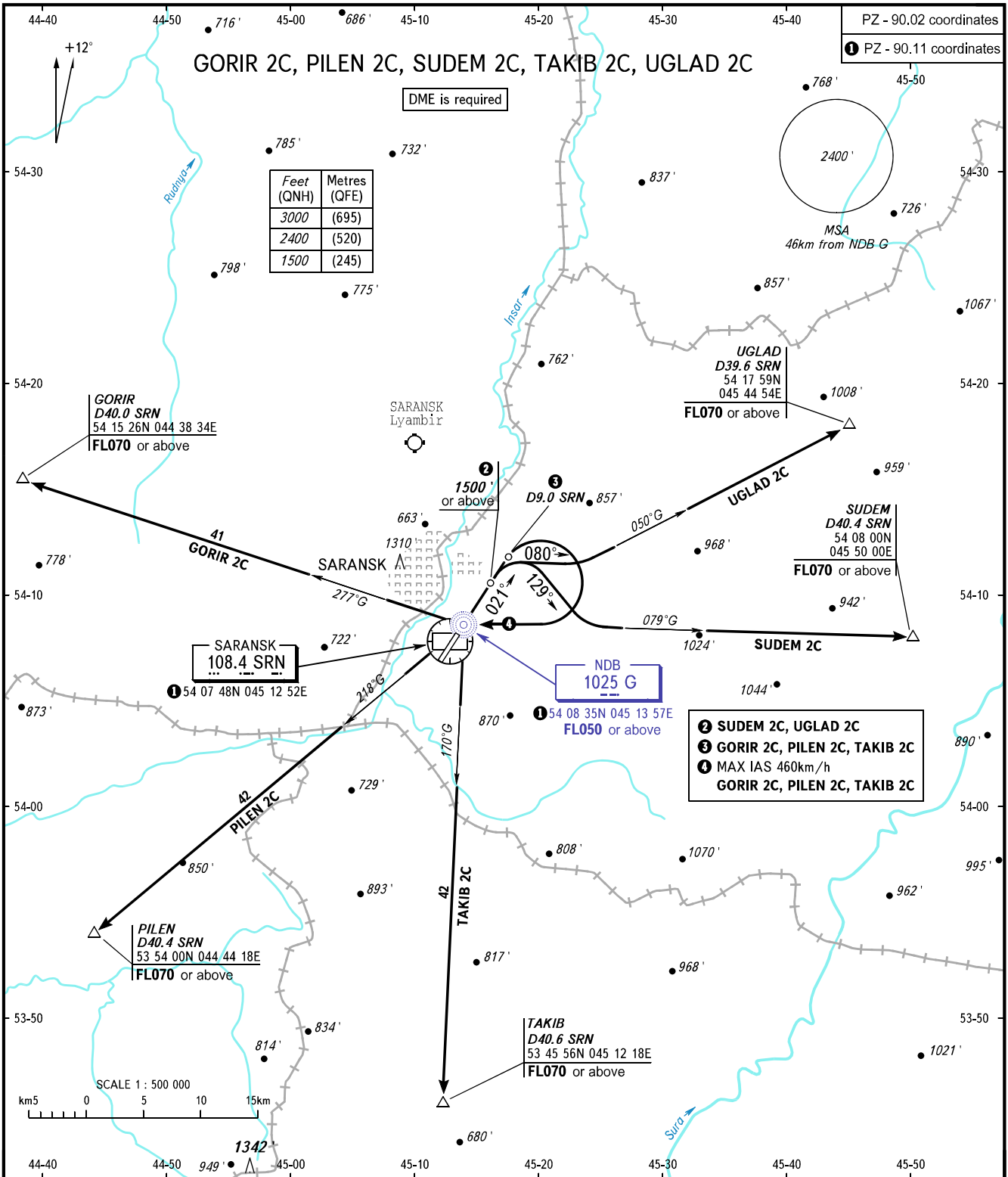


STANDARD DEPARTURE CHART  
INSTRUMENT (SID) - ICAO

TRANSITION  
ALTITUDE: 3000'

SARANSK, RUSSIA  
SARANSK  
RWY 02



TOWER 118.100

**WARNING:**

- The minimum climb gradients are as follows (required due to the airspace limitation):
  - 4.1% up to FL050 for SID GORIR 2C, PILEN 2C, TAKIB 2C;
  - 4.5% up to FL070 for SID SUDEM 2C;
  - 4.9% up to FL070 for SID UGLAD 2C.
- Turn before passing NDB G is PROHIBITED for SUDEM 2C, UGLAD 2C.

BEARINGS AND TRACKS ARE MAGNETIC  
ALTITUDES AND ELEVATIONS IN FEET  
DISTANCES IN KILOMETRES

CHANGE: New chart