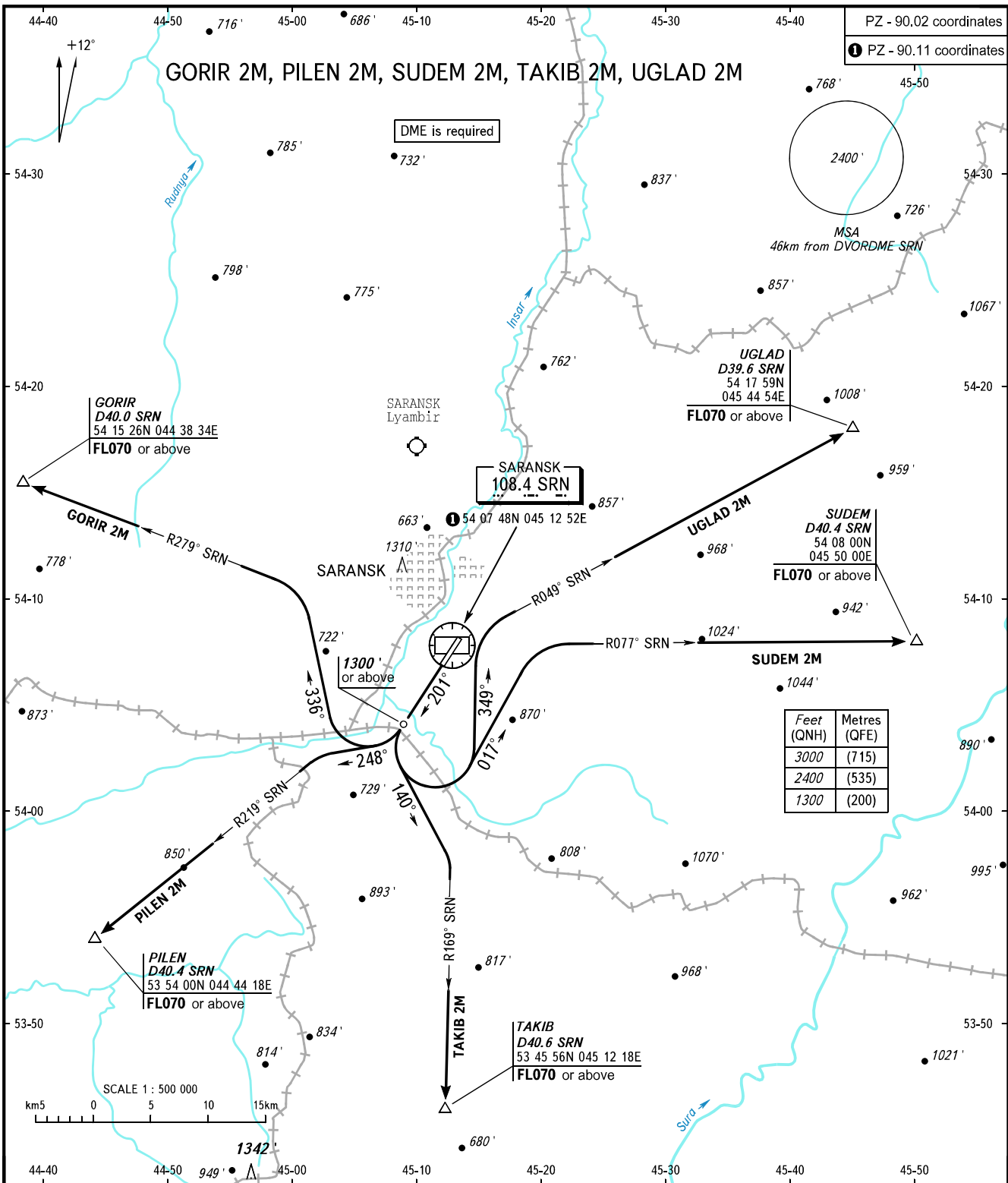


STANDARD DEPARTURE CHART  
INSTRUMENT (SID) - ICAO

TRANSITION  
ALTITUDE: **3000'**

SARANSK, RUSSIA  
SARANSK  
RWY 20



TOWER **118.100**

**WARNING**  
The minimum climb gradients are as follows (required due to the airspace limitation):  
- 4.2% up to FL070 for SID GORIR 2M;  
- 4.9% up to FL070 for SID PILEN 2M;  
- 3.5% up to FL070 for SID SUDEM 2M;  
- 5.0% up to FL070 for SID TAKIB 2M.

BEARINGS AND TRACKS ARE MAGNETIC  
ALTITUDES AND ELEVATIONS IN FEET  
DISTANCES IN KILOMETRES