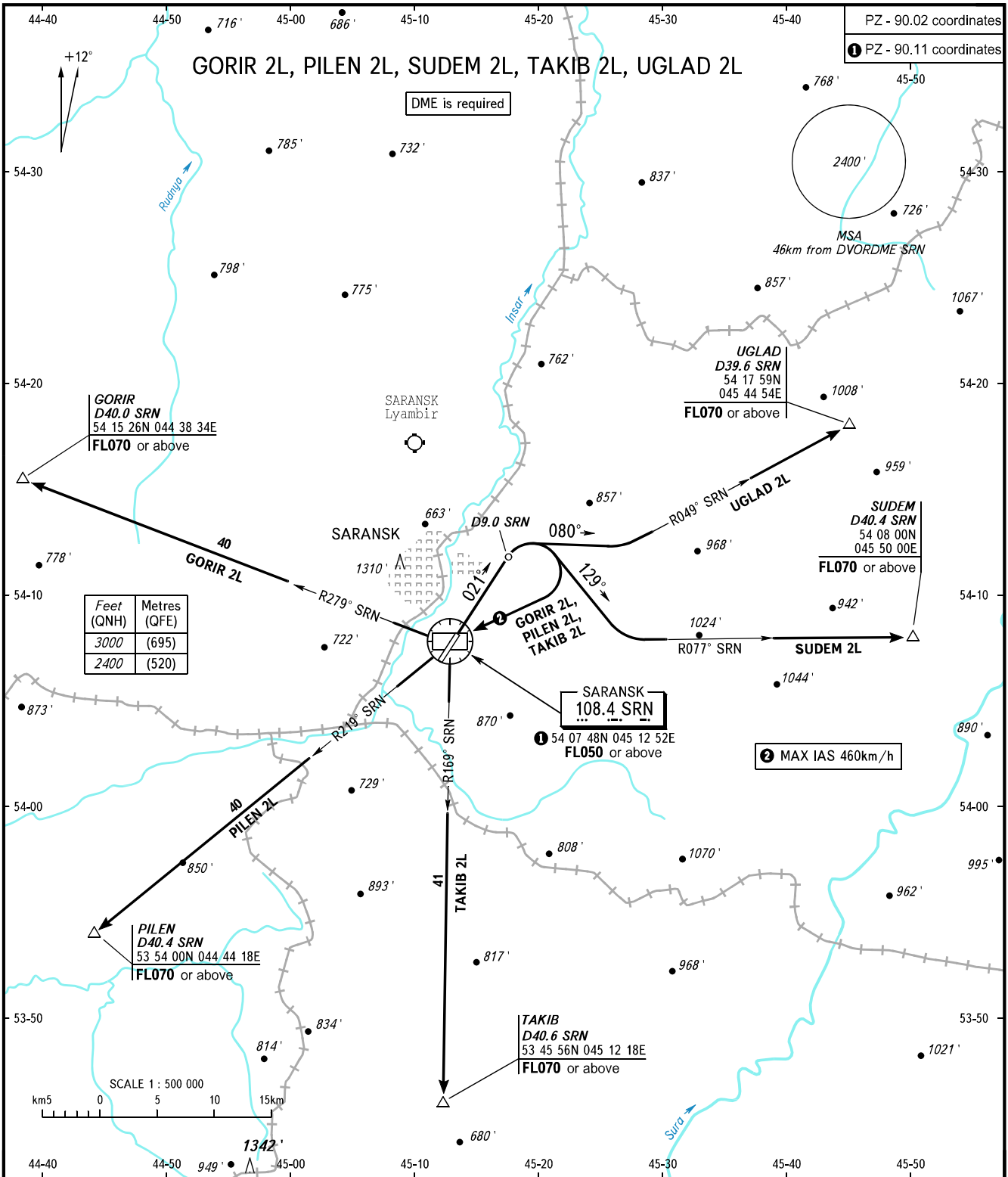


STANDARD DEPARTURE CHART
INSTRUMENT (SID) - ICAO

TRANSITION
ALTITUDE: 3000'

SARANSK, RUSSIA
SARANSK
RWY 02



TOWER 118.100

WARNING

The minimum climb gradients are as follows (required due to the airspace limitation):
 - 4.1% up to FL050 for SID GORIR 2L, PILEN 2L, TAKIB 2L;
 - 4.1% up to FL070 for SID SUDEM 2L;
 - 4.8% up to FL070 for SID UGLAD 2L.

BEARINGS AND TRACKS ARE MAGNETIC
ALTITUDES AND ELEVATIONS IN FEET
DISTANCES IN KILOMETRES

CHANGE: New chart