

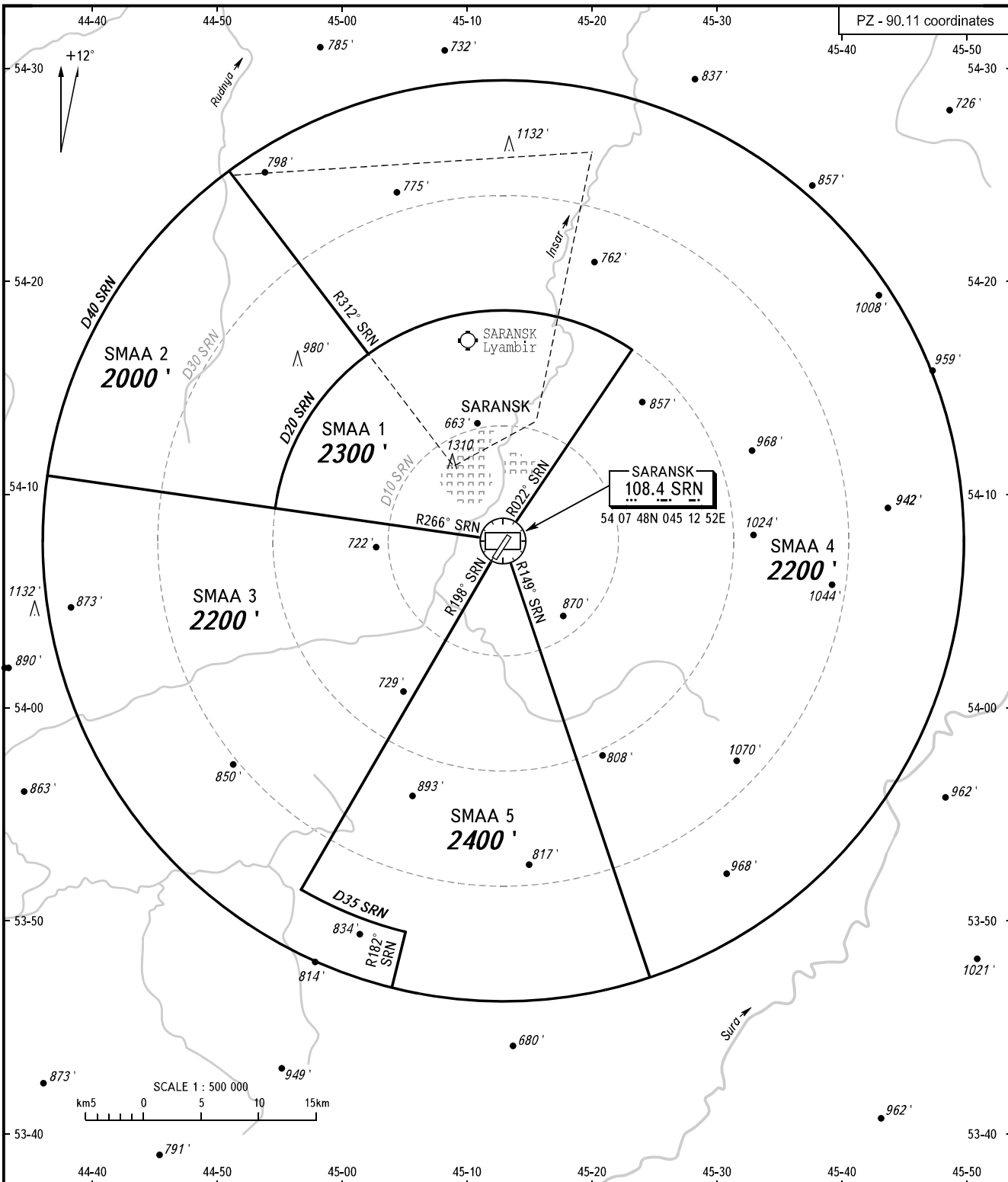
ATC SURVEILLANCE MINIMUM
ALTITUDE CHART- ICAO

ELEV
709'

TRANSITION ALTITUDE: 3000'

SARANSK, RUSSIA

SARANSK



TOWER 118.100

WARNING:

1. The chart may only be used for cross-checking of altitudes assigned while the aircraft is identified under radar control.
2. TEMPERATURE CORRECTION:
The altitude value of SMAA is calculated for ISA conditions (15° C).
When vectoring is executed at a temperature of 0° C or below, the minimum vectoring altitudes must be corrected by altimeter temperature correction.
3. COMMUNICATION FAILURE: As in accordance with the procedures described in AIP.
4. The coordinates of SMAA are on the reverse of this page.

BEARINGS AND TRACKS ARE MAGNETIC
ALTITUDES AND ELEVATIONS IN FEET
DISTANCES IN KILOMETRES

CHANGE: New chart

SURVEILLANCE MINIMUM ALTITUDE AREAS		
IDENT	MNM ALT	LATERAL LIMITS (PZ-90.11 coordinates)
SMAA 1	2300'	540918N 0445440E, then clockwise by arc of a circle radius of 20 KM centred at 540748N 0451252E to 541644N 0452309E, 540748N 0451252E, 540918N 0445440E
SMAA 2	2000'	540918N 0445440E, then clockwise by arc of a circle radius of 20 KM centred at 540748N 0451252E to 541632N 0450205E, 542457N 0445102E, then along Saransk CTR boundary to 541046N 0443625E, 540918N 0445440E
SMAA 3	2200'	541046N 0443625E, 540748N 0451252E, 535127N 0445651E, then anticlockwise by arc of a circle radius of 35 KM centred at 540748N 0451252E to 534929N 0450508E, 534635N 0450356E, then along Saransk CTR boundary to 541046N 0443625E
SMAA 4	2200'	541632N 0450205E, 542457N 0445102E, then along Saransk CTR boundary to 534706N 0452436E, 540748N 0451252E, 541644N 0452309E then anticlockwise by arc of a circle radius of 20 KM centred at 540748N 0451252E to 541632N 0450205E
SMAA 5	2400'	540748N 0451252E, 534706N 452436E then along Saransk CTR boundary to 534635N 0450356E, 534929N 0450508E, then clockwise by arc of a circle radius of 35 KM centred at 540748N 0451252E to 535127N 0445651E, 540748N 0451252E