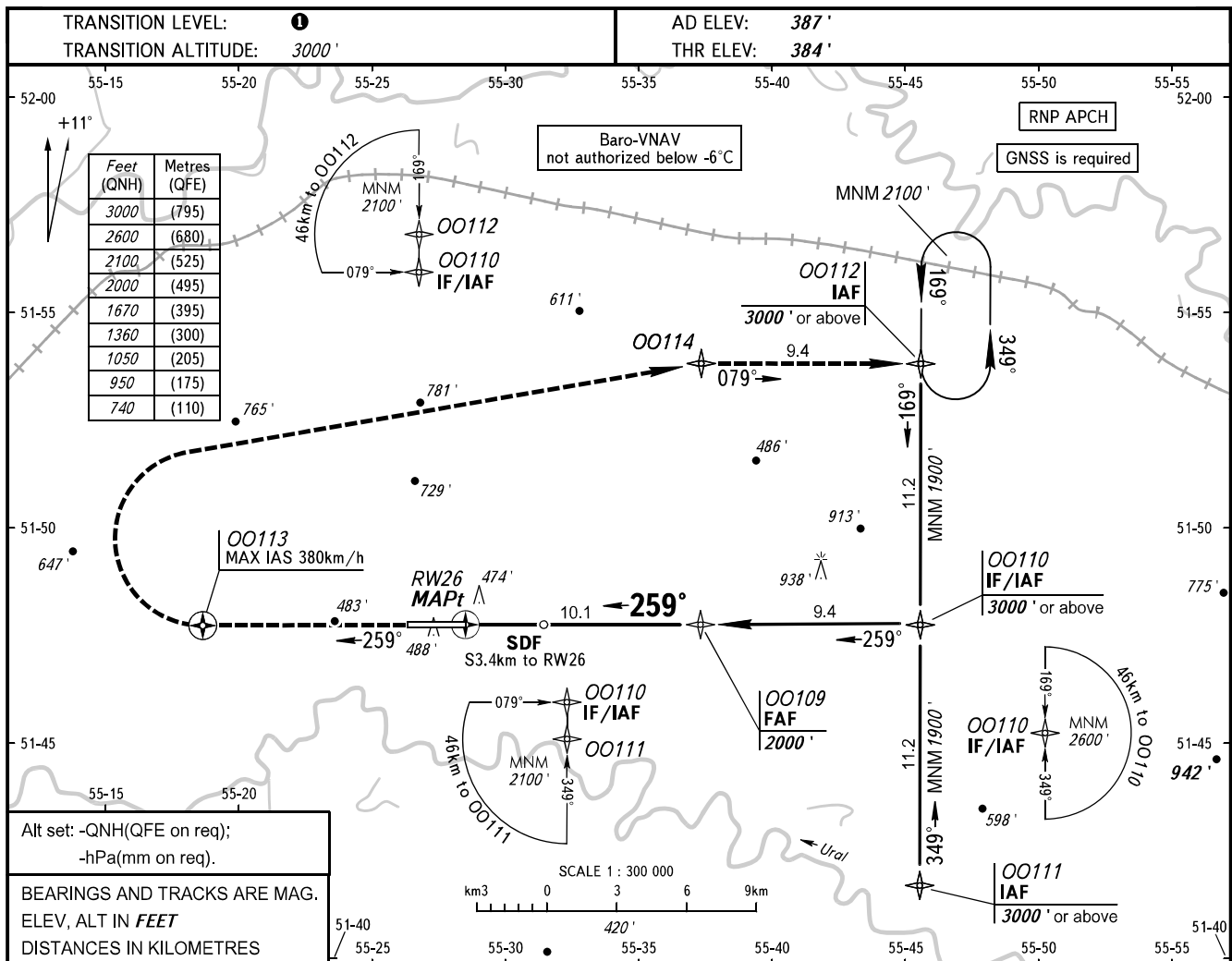


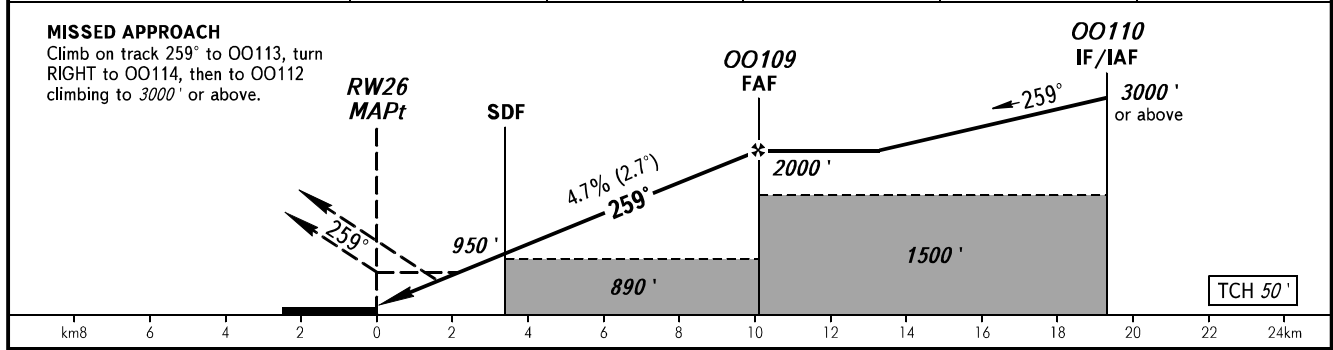
**INSTRUMENT  
APPROACH  
CHART - ICAO**

TOWER	<b>128.000</b>
RADAR	<b>120.400</b>

**ORENBURG, RUSSIA**  
ORENBURG  
RNP RWY 26



DIST to RW26	2.0	4.0	6.0	8.0	10.2
ALTITUDE	740'	1050'	1360'	1670'	2000'



OCA(H)		A	B	C	D
Straight-in	LNAV/VNAV	603' (219')	615' (231')	623' (239')	649' (266')
	LNAV	720' (340')	720' (340')	720' (340')	720' (340')
Circling		840' (460')	970' (590')	1130' (740')	1180' (790')

**① TRANSITION LEVEL:**  
 - FL040 when QNH is 1013 hPa (760mm mercury column) or above;  
 - FL050 when QNH is 977 hPa (733mm mercury column) or above, but less than 1013 hPa (760mm mercury column);  
 - FL060 when QNH is less than 977 hPa (733mm mercury column).  
**NOTE**  
 Timing not authorized for defining MAPt.

GROUND SPEED	km/h	150	180	210	240	270	300	330	360	390
RATE OF DESCENT	m/s	2.0	2.4	2.7	3.1	3.5	3.9	4.3	4.7	5.1
	ft/min	385	463	540	617	694	771	848	925	1002