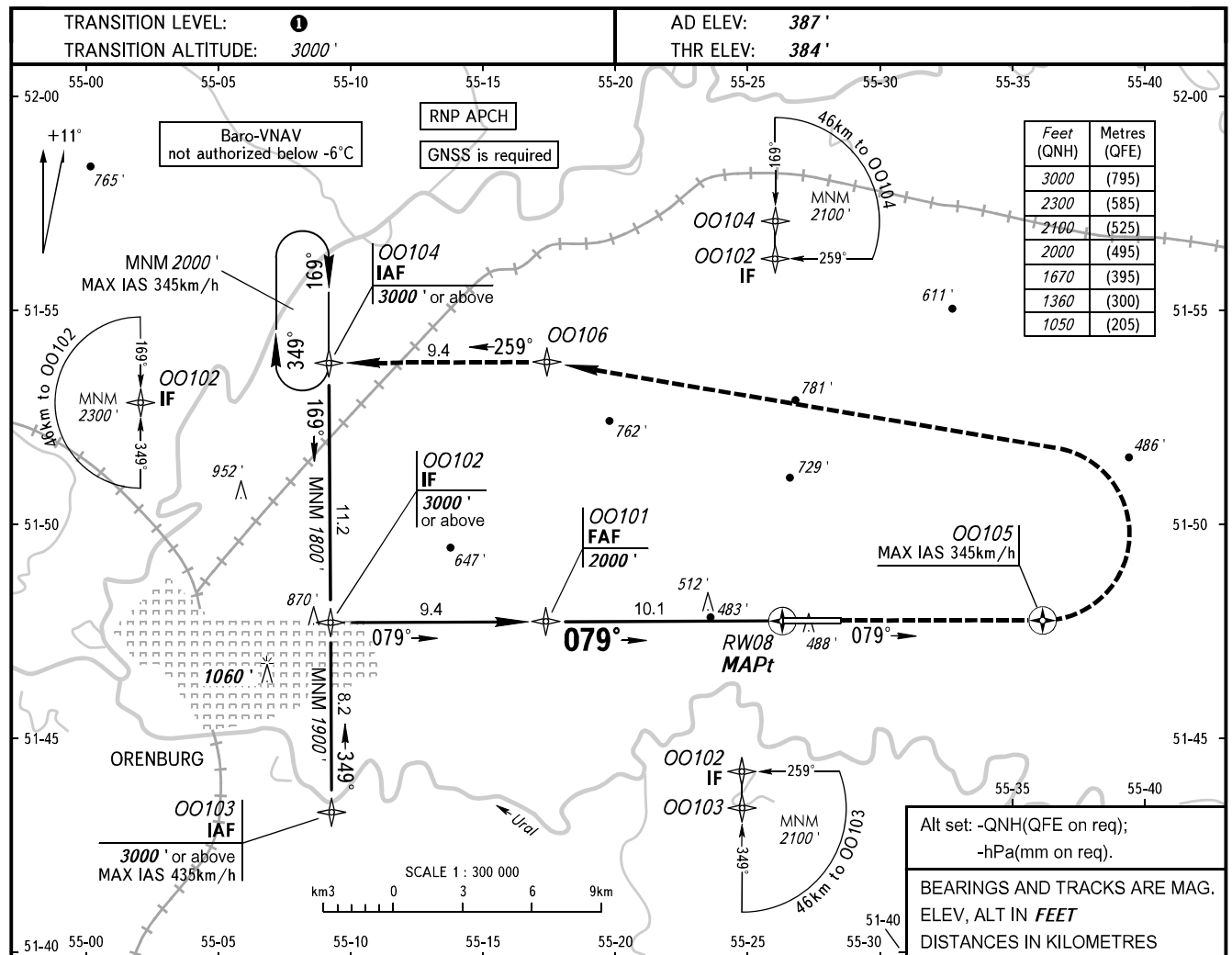


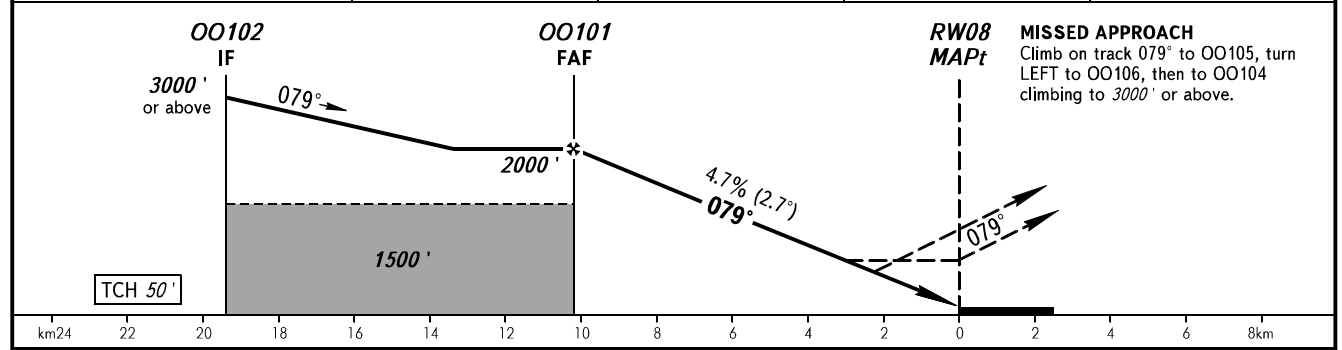
**INSTRUMENT
APPROACH
CHART - ICAO**

**ORENBURG, RUSSIA
ORENBURG
RNP RWY 08**

TOWER	128.000
RADAR	120.400



DIST to RW08	10.2	8.0	6.0	4.0
ALTITUDE	2000'	1670'	1360'	1050'



OCA(H)		A	B	C	D
Straight-in	LNAV/VNAV	584' (199')	596' (211')	607' (223')	649' (265')
	LNAV	760' (380')	760' (380')	760' (380')	760' (380')
Circling		840' (460')	970' (590')	1130' (740')	1180' (790')

1 TRANSITION LEVEL:
 - FLO40 when QNH is 1013 hPa (760mm mercury column) or above;
 - FLO50 when QNH is 977 hPa (733mm mercury column) or above, but less than 1013 hPa (760mm mercury column);
 - FLO60 when QNH is less than 977 hPa (733mm mercury column).
NOTE
 Timing not authorized for defining MAPt.

GROUND SPEED	km/h	150	180	210	240	270	300	330	360	390
RATE OF DESCENT	m/s	2.0	2.4	2.7	3.1	3.5	3.9	4.3	4.7	5.1
	ft/min	385	463	540	617	694	771	848	925	1002

CHANGE: New chart