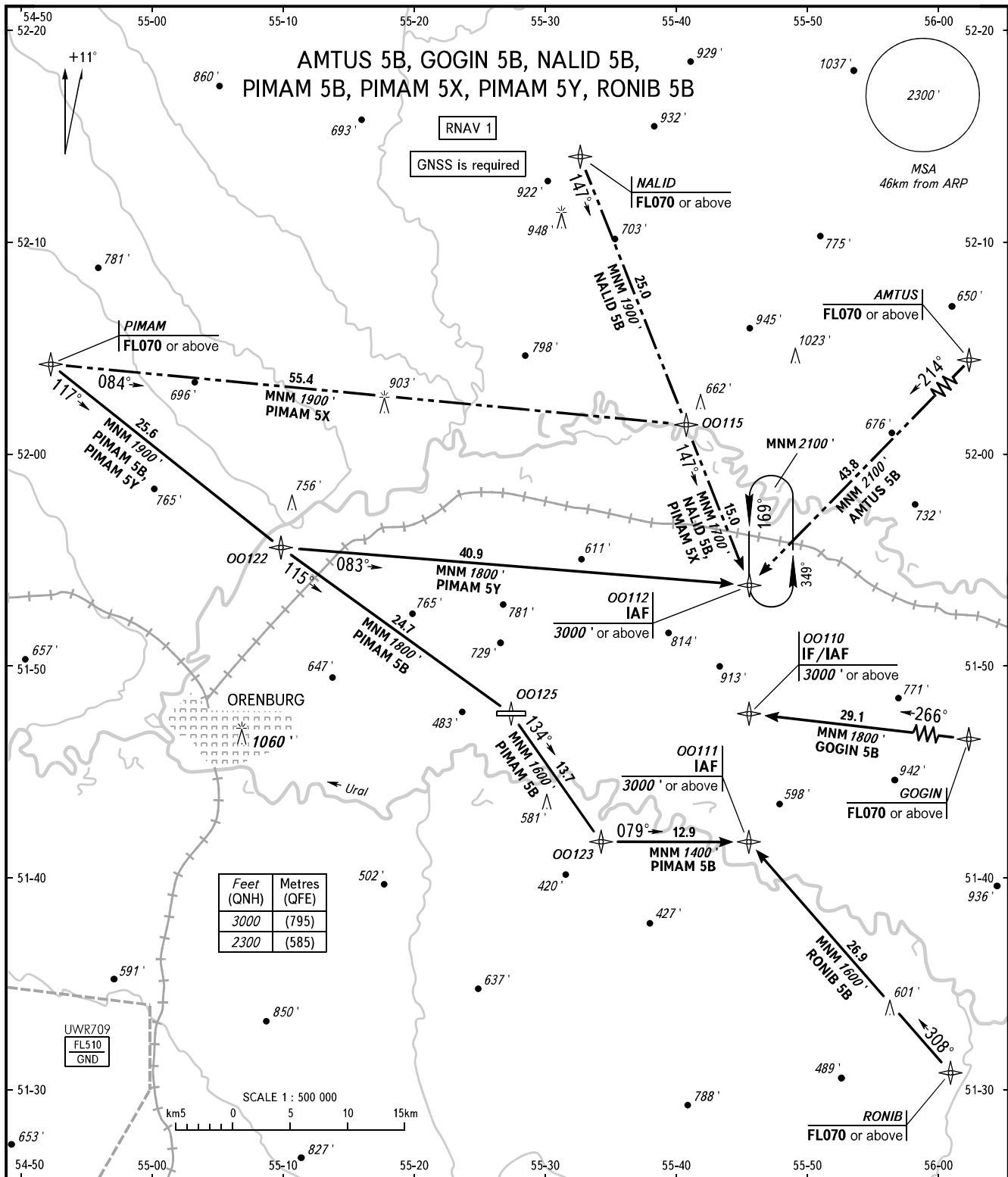


STANDARD ARRIVAL CHART
INSTRUMENT (STAR) - ICAO

ORENBURG, RUSSIA
ORENBURG
RNAV RWY 26

TRANSITION
LEVEL: ①



Feet (QNH)	Metres (QFE)
3000	(795)
2300	(585)

RADAR TOWER 120.400
128.000

WARNING
STAR PIMAM 5Y shall be executed by coordination with ATS unit.

- ① TRANSITION LEVEL:
- FL040 when QNH is 1013 hPa (760mm mercury column) or above;
 - FL050 when QNH is 977 hPa (733mm mercury column) or above, but less than 1013 hPa (760mm mercury column);
 - FL060 when QNH is less than 977 hPa (733mm mercury column).

BEARINGS AND TRACKS ARE MAGNETIC
ALTITUDES AND ELEVATIONS IN FEET
DISTANCES IN KILOMETRES