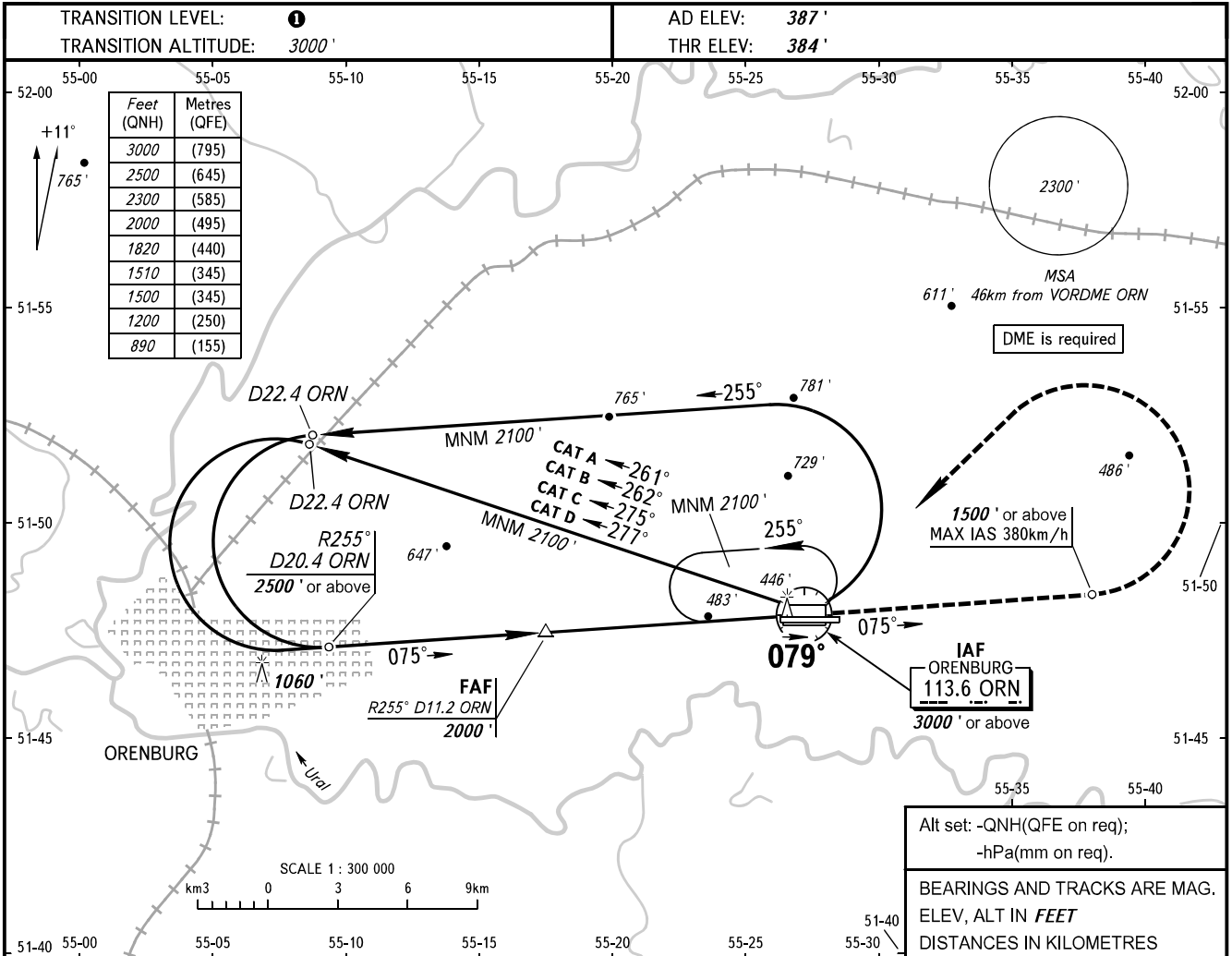


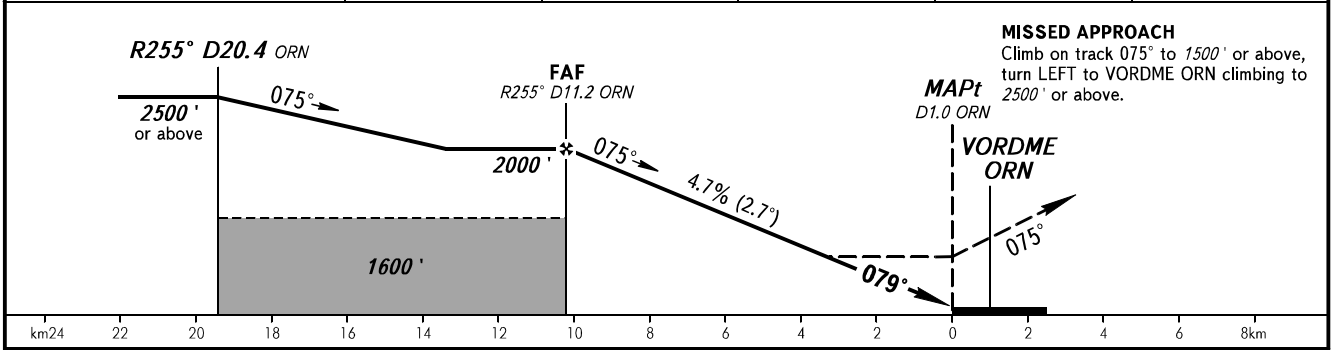
**INSTRUMENT
APPROACH
CHART - ICAO**

TOWER	128.000
RADAR	120.400

ORENBURG, RUSSIA
ORENBURG
VOR RWY 08



DME ORN	11.2	10.0	8.0	6.0	4.0
ALTITUDE	2000'	1820'	1510'	1200'	890'



OCA(H)		A	B	C	D
Straight-in	Approach	780' (400')	780' (400')	780' (400')	780' (400')
	Approach				
Circling		840' (460')	970' (590')	1130' (740')	1180' (790')

1 TRANSITION LEVEL:
 - FL040 when QNH is 1013 hPa (760mm mercury column) or above;
 - FL050 when QNH is 977 hPa (733mm mercury column) or above, but less than 1013 hPa (760mm mercury column);
 - FL060 when QNH is less than 977 hPa (733mm mercury column).
NOTE:
 1. Timing not authorized for defining MAPt.
 2. Turn before passing MAPt is PROHIBITED.
 3. The final approach segment is offset by 4° from RCL.

GROUND SPEED	km/h	150	180	210	240	270	300	330	360	390
RATE OF DESCENT	m/s	2.0	2.4	2.7	3.1	3.5	3.9	4.3	4.7	5.1
	ft/min	385	463	540	617	694	771	848	925	1002

CHANGE: New chart