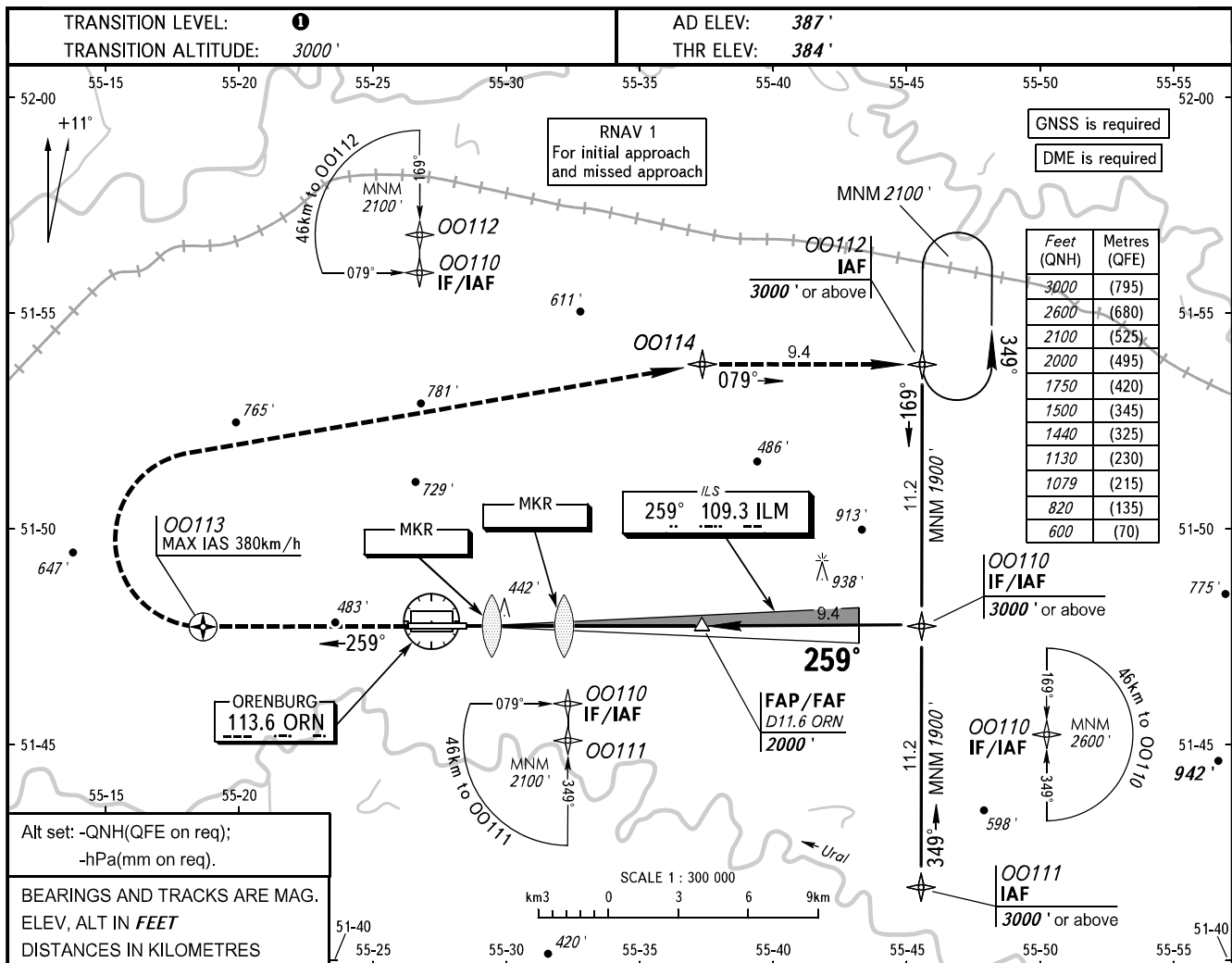


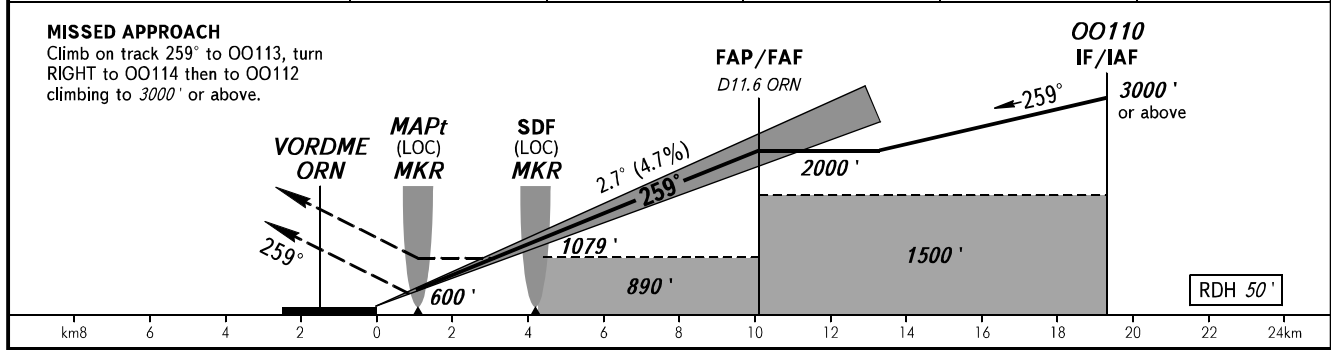
**INSTRUMENT
APPROACH
CHART - ICAO**

TOWER	128.000
RADAR	120.400

ORENBURG, RUSSIA
ORENBURG
ILS Z CAT I, LOC Z RWY 26



DME ORN	4.0	6.0	8.0	10.0	11.6
ALTITUDE	820'	1130'	1440'	1750'	2000'



OCA(H)		A	B	C	D
Straight-in Approach	CAT I	522' (138')	530' (146')	540' (156')	549' (165')
	LOC With SDF	690' (310')	690' (310')	690' (310')	690' (310')
	LOC WO SDF	890' (510')	890' (510')	890' (510')	890' (510')
Circling		890' (510')	970' (590')	1130' (740')	1180' (790')

TRANSITION LEVEL:
 - FL040 when QNH is 1013 hPa (760mm mercury column) or above;
 - FL050 when QNH is 977 hPa (733mm mercury column) or above, but less than 1013 hPa (760mm mercury column);
 - FL060 when QNH is less than 977 hPa (733mm mercury column).
NOTE:
 1. Timing not authorized for defining MAPt.
 2. Turn before passing MAPt is PROHIBITED.

GROUND SPEED	km/h	150	180	210	240	270	300	330	360	390
RATE OF DESCENT	m/s	2.0	2.4	2.7	3.1	3.5	3.9	4.3	4.7	5.1
	ft/min	385	463	540	617	694	771	848	925	1002