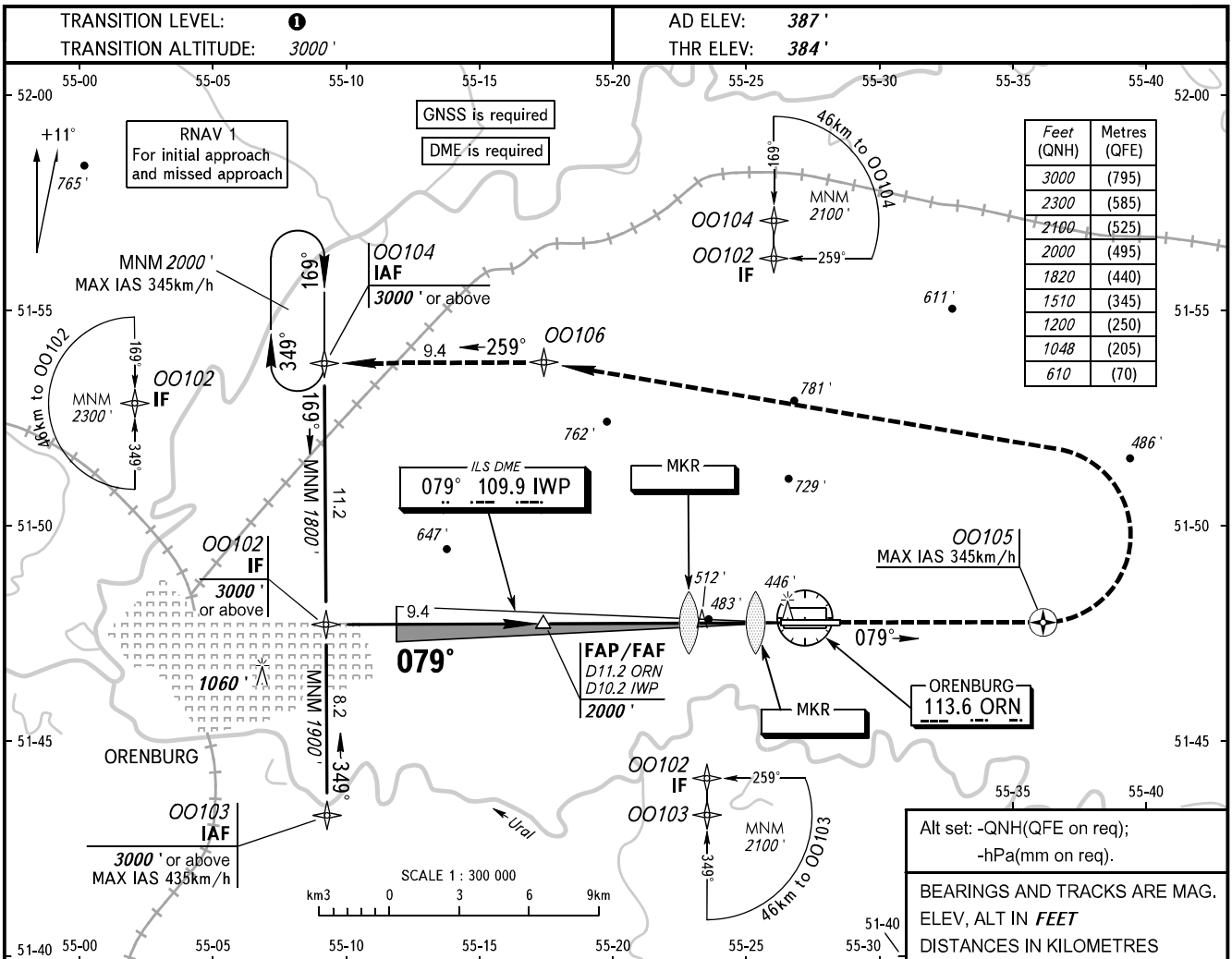


**INSTRUMENT
APPROACH
CHART - ICAO**

ORENBURG, RUSSIA
ORENBURG
ILS Z CAT I, LOC Z RWY 08

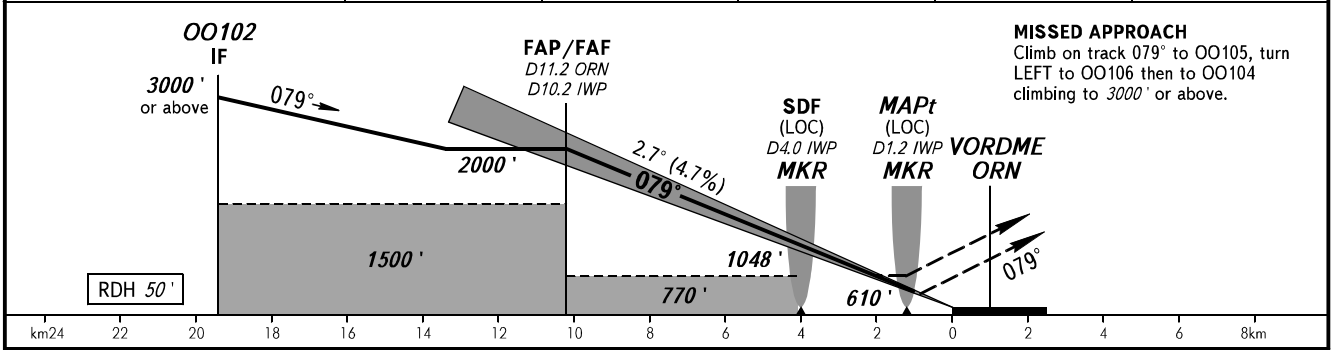
TOWER	128.000
RADAR	120.400



Feet (QNH)	Metres (QFE)
3000	(795)
2300	(585)
2100	(525)
2000	(495)
1820	(440)
1510	(345)
1200	(250)
1048	(205)
610	(70)

Alt set: -QNH(QFE on req);
-hPa(mm on req).
BEARINGS AND TRACKS ARE MAG.
ELEV, ALT IN FEET
DISTANCES IN KILOMETRES

DME ORN	11.2	10.0	8.0	6.0	4.0
ALTITUDE	2000'	1820'	1510'	1200'	890'



MISSED APPROACH
Climb on track 079° to OO105, turn LEFT to OO106 then to OO104 climbing to 3000' or above.

OCA(H)		A	B	C	D
Straight-in Approach	CAT I	529' (145')	540' (156')	550' (166')	562' (178')
	LOC With SDF	760' (380')	760' (380')	760' (380')	760' (380')
	LOC WO SDF	770' (390')	770' (390')	770' (390')	770' (390')
Circling		840' (460')	970' (590')	1130' (740')	1180' (790')

TRANSITION LEVEL:
- FL040 when QNH is 1013 hPa (760mm mercury column) or above;
- FL050 when QNH is 977 hPa (733mm mercury column) or above, but less than 1013 hPa (760mm mercury column);
- FL060 when QNH is less than 977 hPa (733mm mercury column).
NOTE
Timing not authorized for defining MAPt.

GROUND SPEED	km/h	150	180	210	240	270	300	330	360	390
RATE OF DESCENT	m/s	2.0	2.4	2.7	3.1	3.5	3.9	4.3	4.7	5.1
	ft/min	385	463	540	617	694	771	848	925	1002

CHANGE: New chart