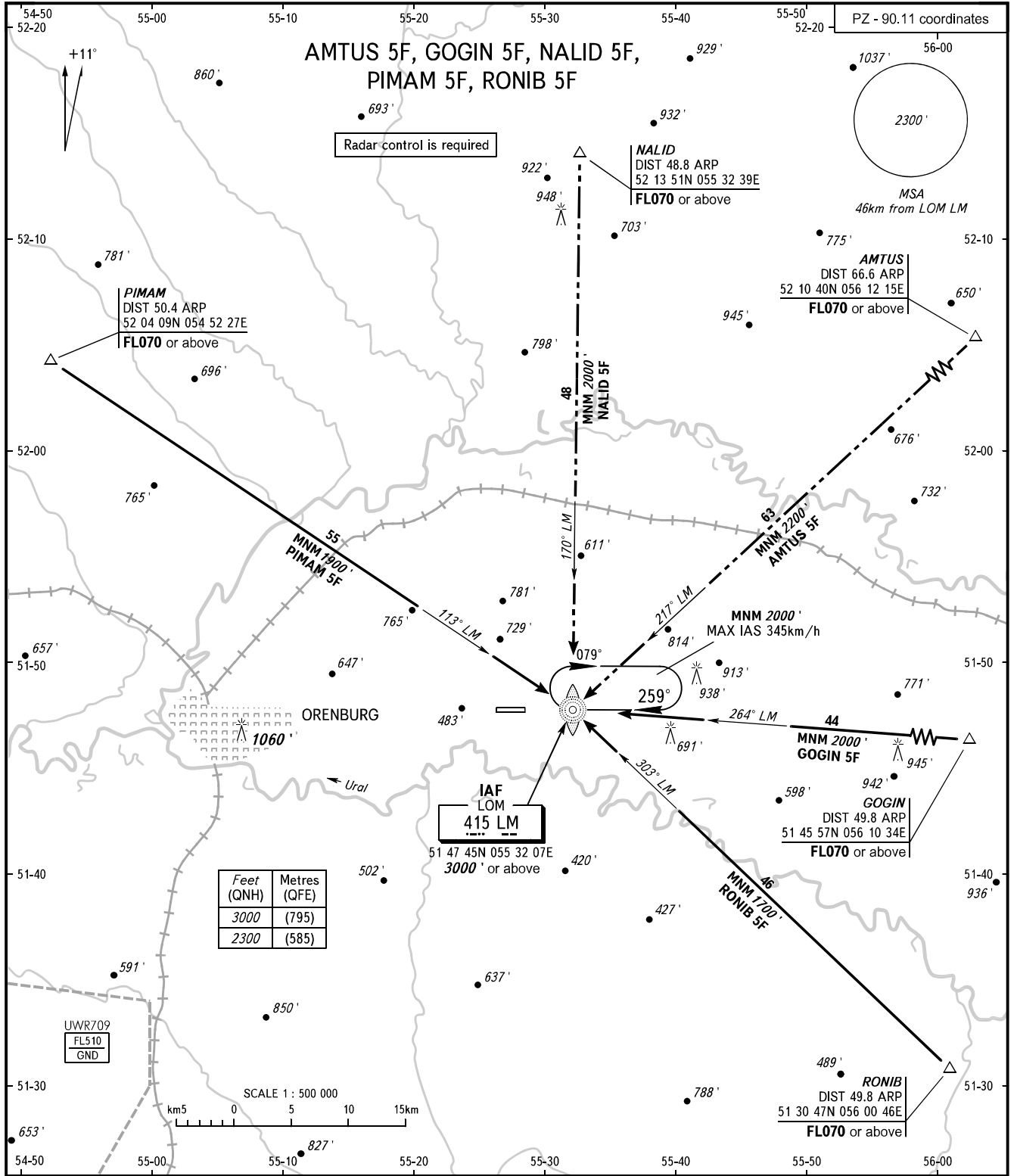


STANDARD ARRIVAL CHART  
INSTRUMENT (STAR) - ICAO

ORENBURG, RUSSIA  
ORENBURG  
RWY 26

TRANSITION  
LEVEL: ①



RADAR TOWER  
**120.400**  
**128.000**

**WARNING**

STAR PIMAM 5F shall be executed by coordination with ATS unit.

① **TRANSITION LEVEL:**

- FL040 when QNH is 1013 hPa (760mm mercury column) or above;
- FL050 when QNH is 977 hPa (733mm mercury column) or above, but less than 1013 hPa (760mm mercury column);
- FL060 when QNH is less than 977 hPa (733mm mercury column).

BEARINGS AND TRACKS ARE MAGNETIC  
ALTITUDES AND ELEVATIONS IN **FEET**  
DISTANCES IN KILOMETRES