

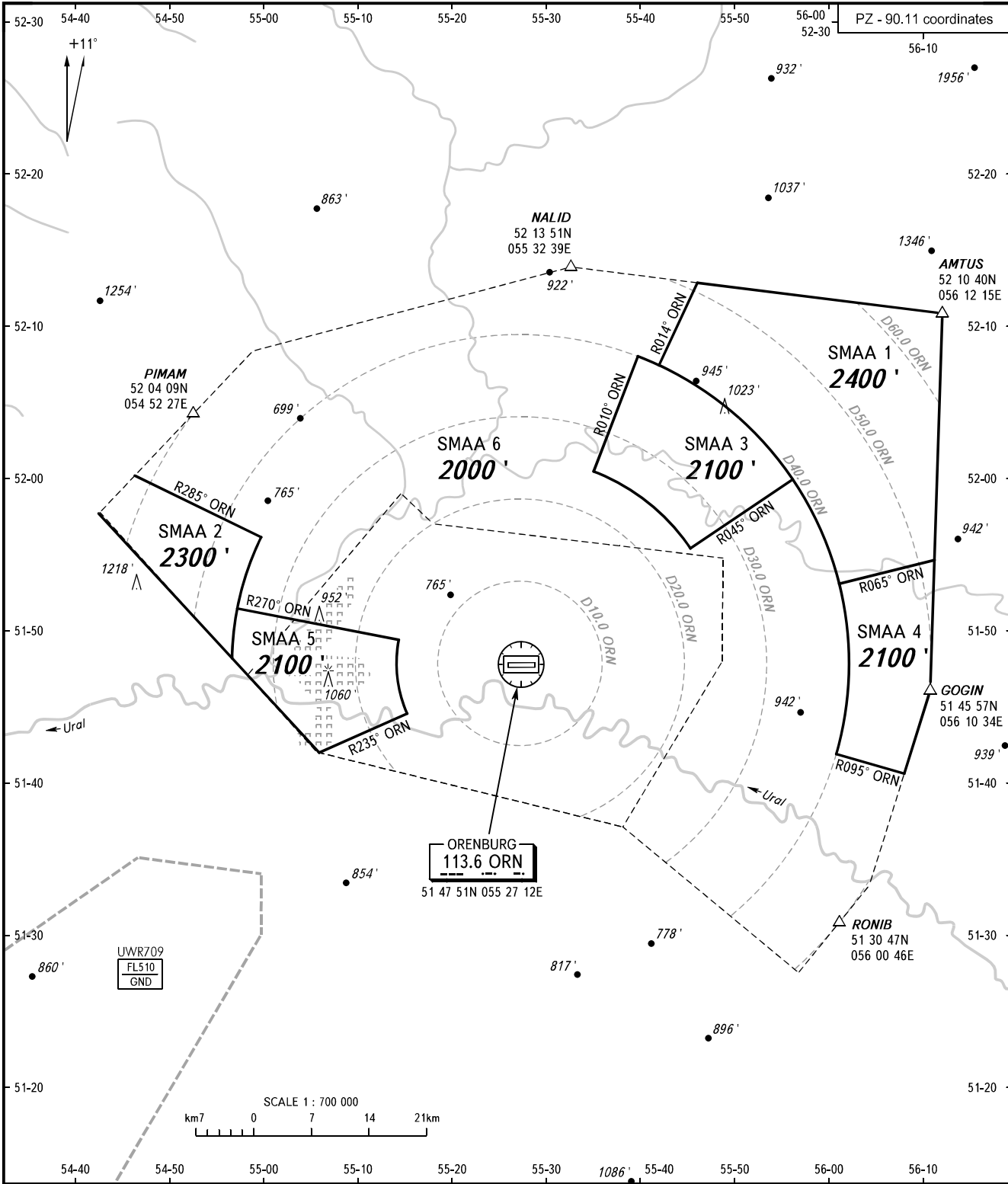
ATC SURVEILLANCE MINIMUM  
ALTITUDE CHART - ICAO

ELEV  
387'

TRANSITION ALTITUDE: 3000'

ORENBURG, RUSSIA

ORENBURG



RADAR TOWER 120.400  
128.000

- NOTE:**
1. The chart may only be used for cross-checking of altitudes assigned while the aircraft is under radar control.
  2. When vectoring is carried out under low-temperature conditions, minimum vectoring altitudes for IFR flight must be corrected by altimeter temperature correction.

BEARINGS AND TRACKS ARE MAGNETIC  
ALTITUDES AND ELEVATIONS IN FEET  
DISTANCES IN KILOMETRES

CHANGE: New chart

**ORENBURG, RUSSIA**  
**ORENBURG**

SURVEILLANCE MINIMUM ALTITUDE AREAS		
IDENT	MNM ALT	LATERAL LIMITS (PZ-90.11 coordinates)
SMAA 1	2400'	520723.6N 0554201.1E – 521247.6N 0554609.2E, then along Orenburg CTR boundary to 515429.7N 0561108.7E – 515259.6N 0560102.1E, then anticlockwise by arc of a circle radius of 40 KM centred at 514751.3N 0552712.2E to 520723.6N 0554201.1E
SMAA 2	2300'	514807.5N 0545645.5E, then along Orenburg CTR boundary to 520003.1N 0544617.8E – 515604.6N 0545945.3E, then anticlockwise by arc of a circle radius of 35 KM centred at 514751.3N 0552712.2E to 514807.5N 0545645.5E
SMAA 3	2100'	520026.4N 0553502.1E – 520759.2N 0553946.1E, then clockwise by arc of a circle radius of 40 KM centred at 514751.3N 0552712.2E to 515951.7N 0555611.0E – 515522.4N 0554517.1E, then anticlockwise by arc of a circle radius of 25 KM centred at 514751.3N 0552712.2E to 520026.4N 0553502.1E
SMAA 4	2100'	515259.6N 0560102.1E – 515429.7N 0561108.7E, then along Orenburg CTR boundary to 514030.7N 0560744.2E – 514149.7N 0560034.9E, then anticlockwise by arc of a circle radius of 40 KM centred at 514751.3N 0552712.2E to 515259.6N 0560102.1E
SMAA 5	2100'	514157.9N 0550601.9E, then along Orenburg CTR boundary to 514807.5N 0545645.5E, then clockwise by arc of a circle radius of 35 KM centred at 514751.3N 0552712.2E to 515123.6N 0545716.6E – 514923.2N 0551423.3E, then anticlockwise by arc of a circle radius of 15 KM centred at 514751.3N 0552712.2E to 514433.2N 0551517.9E – 514157.9N 0550601.9E
SMAA 6	2000'	514157.9N 0550601.9E – 514433.2N 0551517.9E, then clockwise by arc of a circle radius of 15 KM centred at 514751.3N 0552712.2E to 514923.2N 0551423.3E – 515123.6N 0545716.6E, then clockwise by arc of a circle radius of 35 KM centred at 514751.3N 0552712.2E to 515604.6N 0545945.3E – 520003.1N 0544617.8E, then along Orenburg CTR boundary to 521247.6N 0554609.2E – 520723.6N 0554201.1E, then anticlockwise by arc of a circle radius of 40 KM centred at 514751.3N 0552712.2E to 520759.2N 0553946.1E – 520026.4N 0553502.1E, then clockwise by arc of a circle radius of 25 KM centred at 514751.3N 0552712.2E to 515522.4N 0554517.1E – 515951.7N 0555611.0E, then clockwise by arc of a circle radius of 40 KM centred at 514751.3N 0552712.2E to 514149.7N 0560034.9E – 514030.7N 0560744.2E, then along Orenburg CTR boundary to 514157.9N 0550601.9E