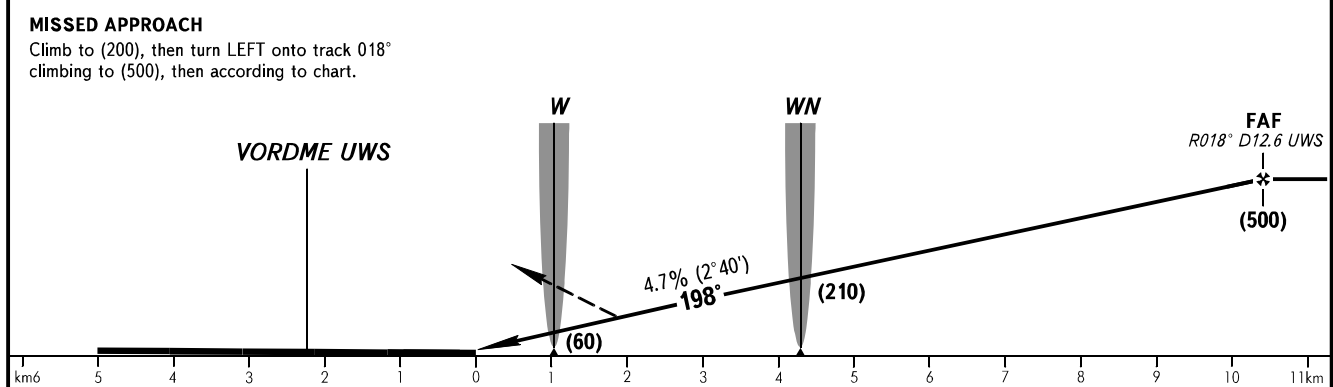
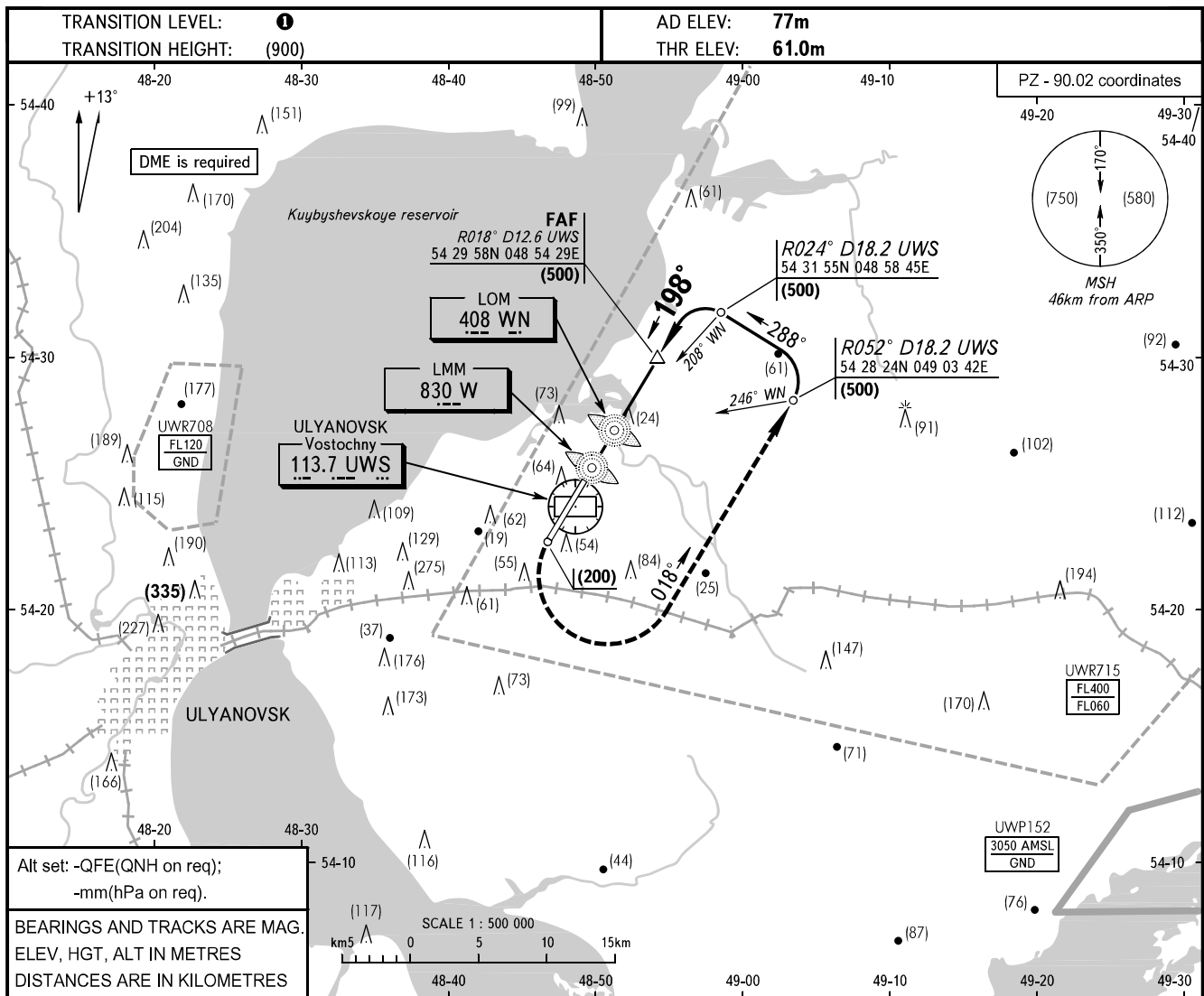


**INSTRUMENT
APPROACH
CHART - ICAO**

VOSTOCHNY TOWER **124.200**

ULYANOVSK, RUSSIA
VOSTOCHNY
2 NDB RWY 20



OCA(H)		A	B	C	D	① TRANSITION LEVEL: - FL050 when atmospheric pressure is 726mm mercury column or above; - FL060 when atmospheric pressure is less than 726mm mercury column. WARNING During missed approach, deviation to the right of the course line is PROHIBITED.									
Straight-in Approach	With FAF	169(108)	169(108)	169(108)	169(108)						GROUND SPEED	km/h	150	180	210
	WO FAF	272(211)	272(211)	272(211)	272(211)	RATE OF DESCENT	m/s	2.0	2.4	2.7		3.1	3.5	3.9	4.3