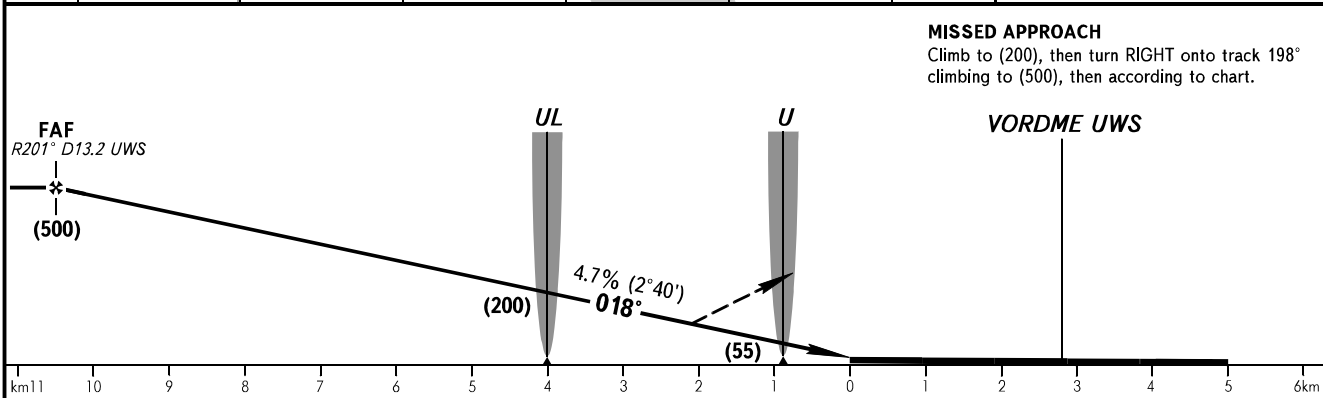
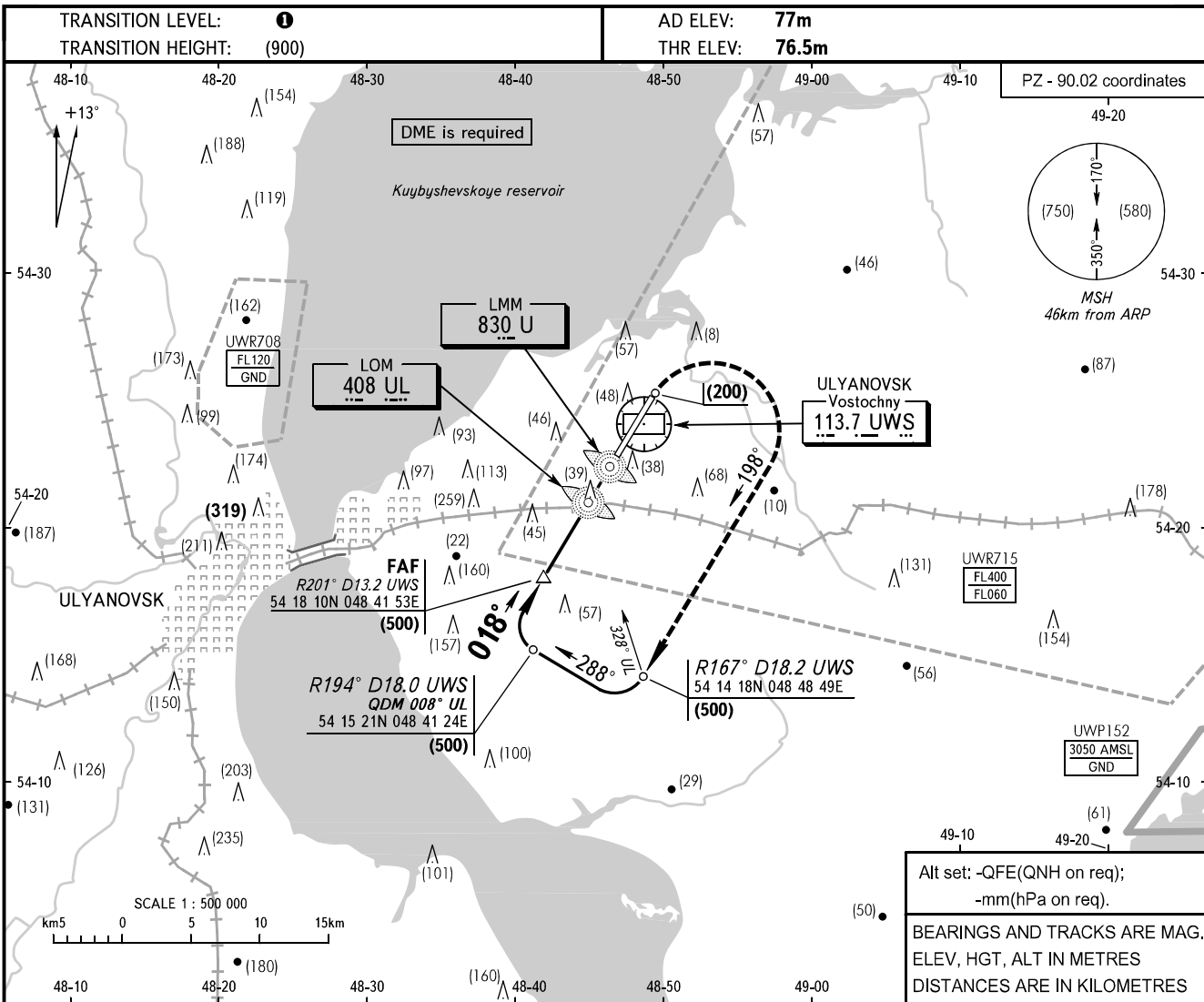


**INSTRUMENT  
APPROACH  
CHART - ICAO**

VOSTOCHNY TOWER **124.200**

**ULYANOVSK, RUSSIA**  
VOSTOCHNY  
2 NDB RWY 02



OCA(H)		A	B	C	D					
Straight-in Approach	<b>With FAF</b>	186(109)	186(109)	186(109)	186(109)					
	<b>WO FAF</b>	191(114)	191(114)	191(114)	191(114)					
GROUND SPEED		km/h	150	180	210	240	270	300	330	360
RATE OF DESCENT		m/s	2.0	2.4	2.7	3.1	3.5	3.9	4.3	4.7

**1** TRANSITION LEVEL:  
- FL050 when atmospheric pressure is 726mm mercury column or above;  
- FL060 when atmospheric pressure is less than 726mm mercury column.

**WARNING**  
During missed approach, deviation to the left of the course line is PROHIBITED.

CHANGE: NIL