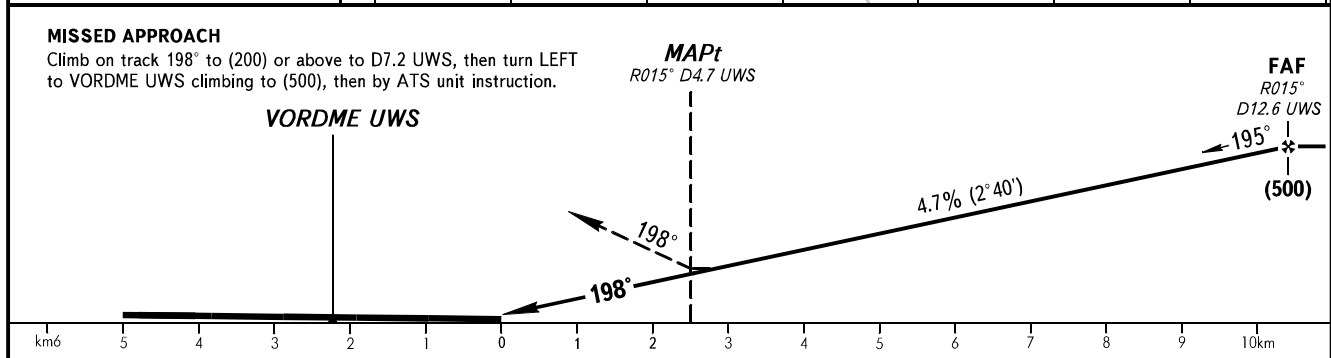
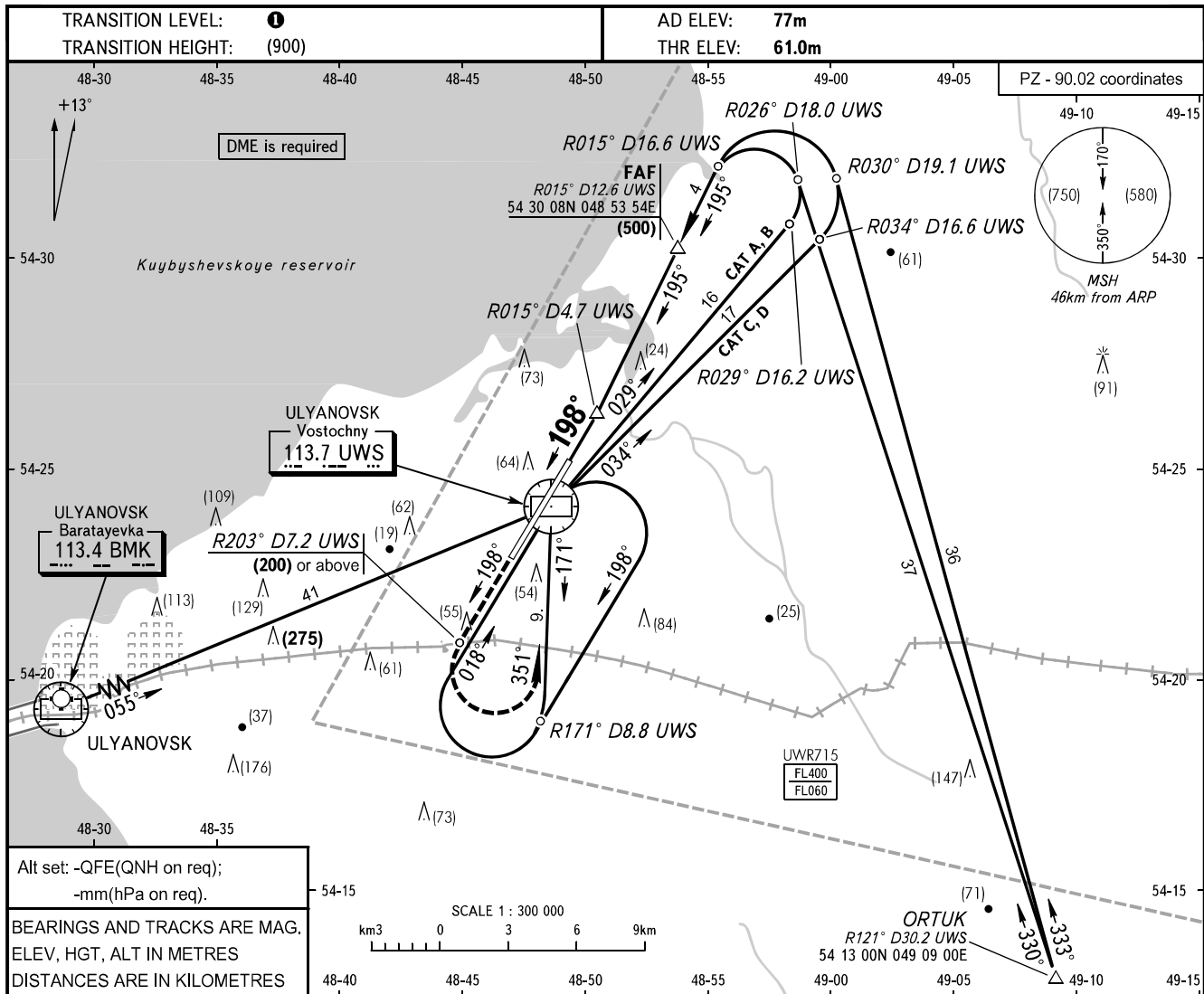


**INSTRUMENT  
APPROACH  
CHART - ICAO**

VOSTOCHNY TOWER **124.200**

**ULYANOVSK, RUSSIA  
VOSTOCHNY  
VOR RWY 20**



OCA(H)		A	B	C	D					
Straight-in	Approach	193(132)	193(132)	193(132)	193(132)					
	Approach									
GROUND SPEED		km/h	150	180	210	240	270	300	330	360
RATE OF DESCENT		m/s	2.0	2.4	2.7	3.1	3.5	3.9	4.3	4.7

**TRANSITION LEVEL:**  
- FLO50 when atmospheric pressure is 726mm mercury column or above;  
- FLO60 when atmospheric pressure is less than 726mm mercury column.

**WARNING:**  
1. Start descending on glide path after passing FAF (R015° D12.6 UWS).  
2. Final approach track is offset by 3° from the runway centre line.