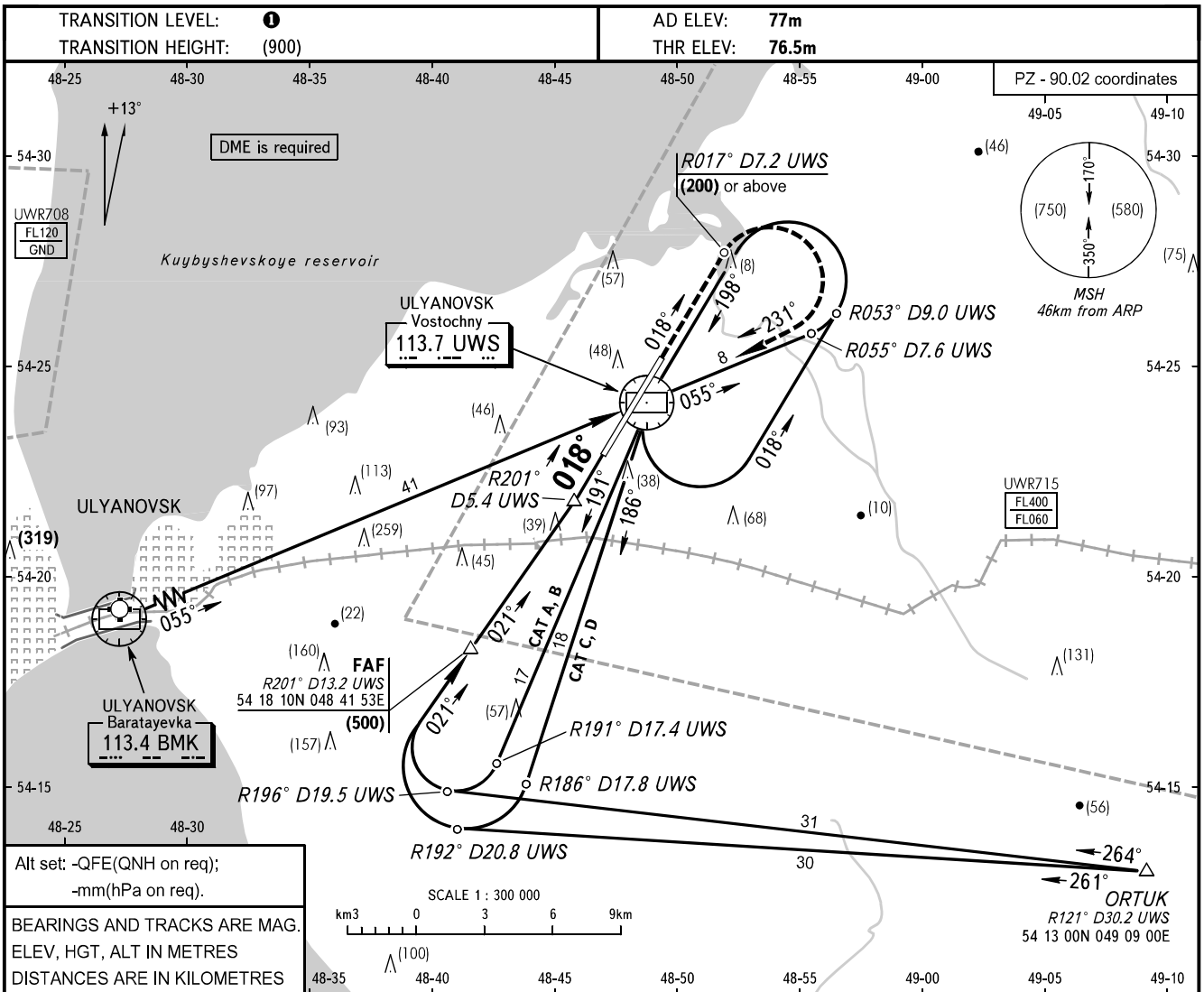


**INSTRUMENT
APPROACH
CHART - ICAO**

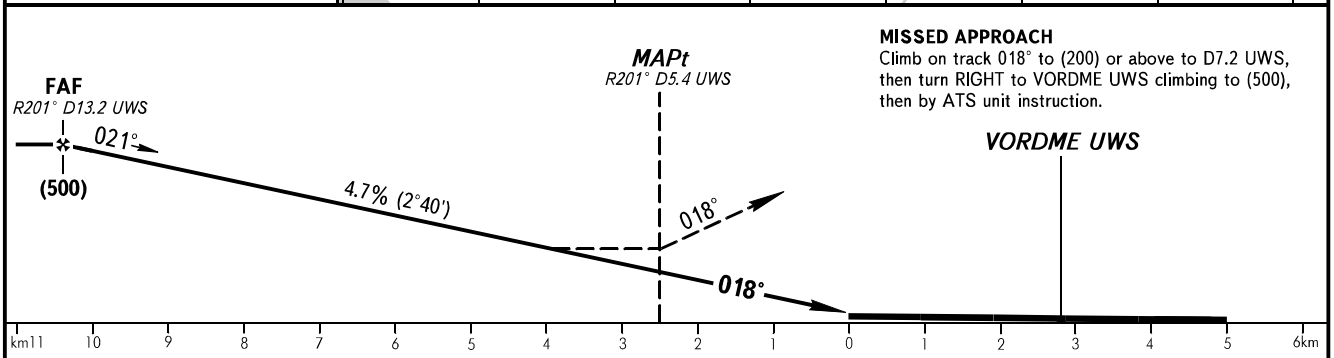
VOSTOCHNY TOWER **124.200**

**ULYANOVSK, RUSSIA
VOSTOCHNY
VOR RWY 02**



Alt set: -QFE(QNH on req);
-mm(hPa on req).

BEARINGS AND TRACKS ARE MAG.
ELEV, HGT, ALT IN METRES
DISTANCES ARE IN KILOMETRES



OCA(H)		A	B	C	D
Straight-in		214(137)	214(137)	214(137)	214(137)
	Approach				

1 TRANSITION LEVEL:
- FL050 when atmospheric pressure is 726mm mercury column or above;
- FL060 when atmospheric pressure is less than 726mm mercury column.

WARNING:
1. Start descending on glide path after passing FAF (R201° D13.2 UWS).
2. Final approach track is offset by 3° from the runway centre line.

GROUND SPEED	km/h	150	180	210	240	270	300	330	360
RATE OF DESCENT	m/s	2.0	2.4	2.7	3.1	3.5	3.9	4.3	4.7

CHANGE: NIL