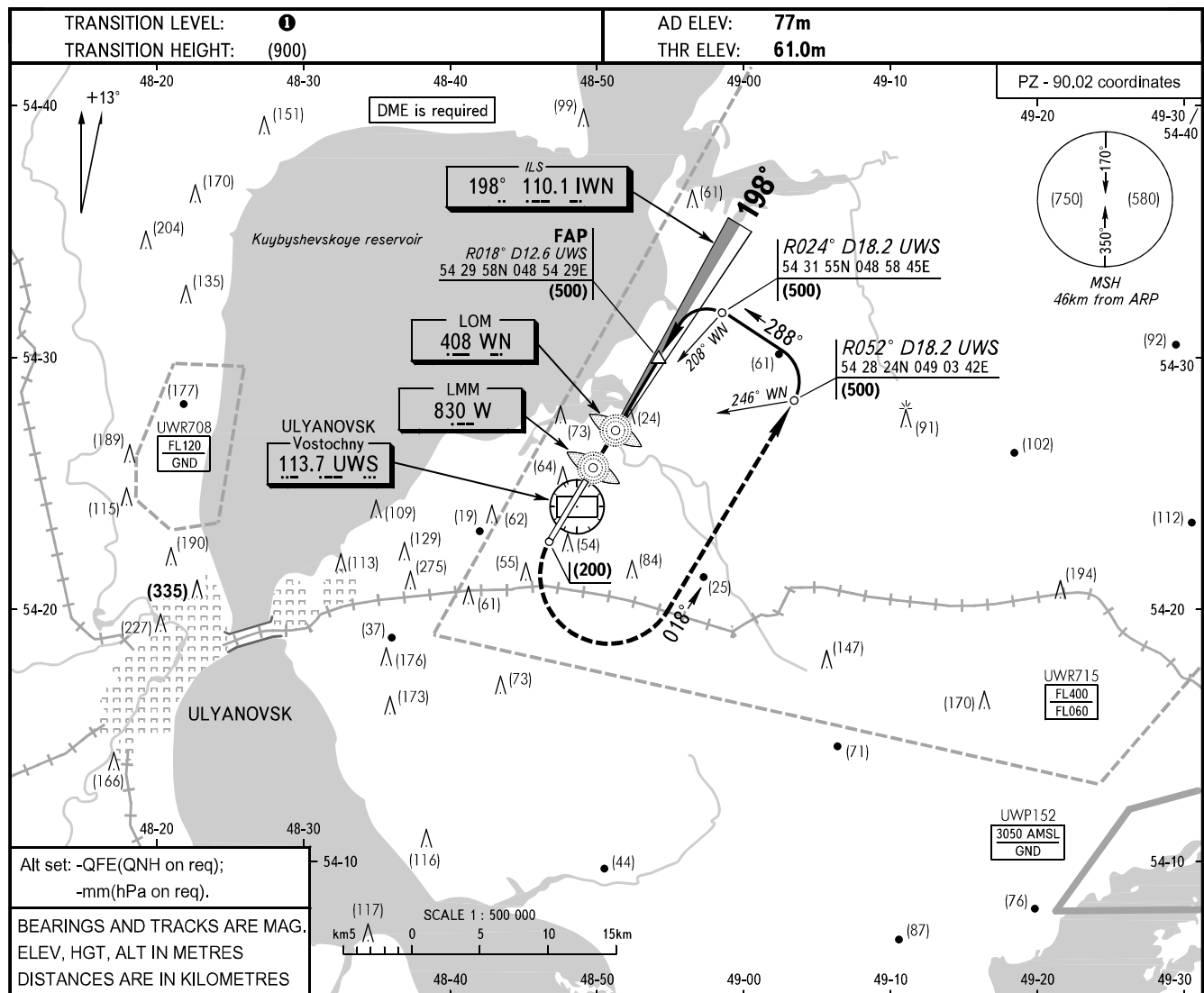


INSTRUMENT
APPROACH
CHART - ICAO

VOSTOCHNY TOWER 124.200

ULYANOVSK, RUSSIA
VOSTOCHNY
ILS RWY 20 CAT I



MISSED APPROACH
Climb to (200), then turn LEFT onto track 018° climbing to (500), then according to chart.

VORDME UWS

W (60)

WN (210)

FAP R018° D12.6 UWS (500)

GP 2°40' 198°

RDH 15.0

OCA(H)		A	B	C	D				
Straight-in Approach	CAT I	104(43)	107(46)	110(49)	114(53)				
GROUND SPEED	km/h	150	180	210	240	270	300	330	360
RATE OF DESCENT	m/s	2.0	2.4	2.7	3.1	3.5	3.9	4.3	4.7

① TRANSITION LEVEL:
- FL050 when atmospheric pressure is 726mm mercury column or above;
- FL060 when atmospheric pressure is less than 726mm mercury column.

WARNING
During missed approach, deviation to the right of the course line is PROHIBITED.

CHANGE: OBST