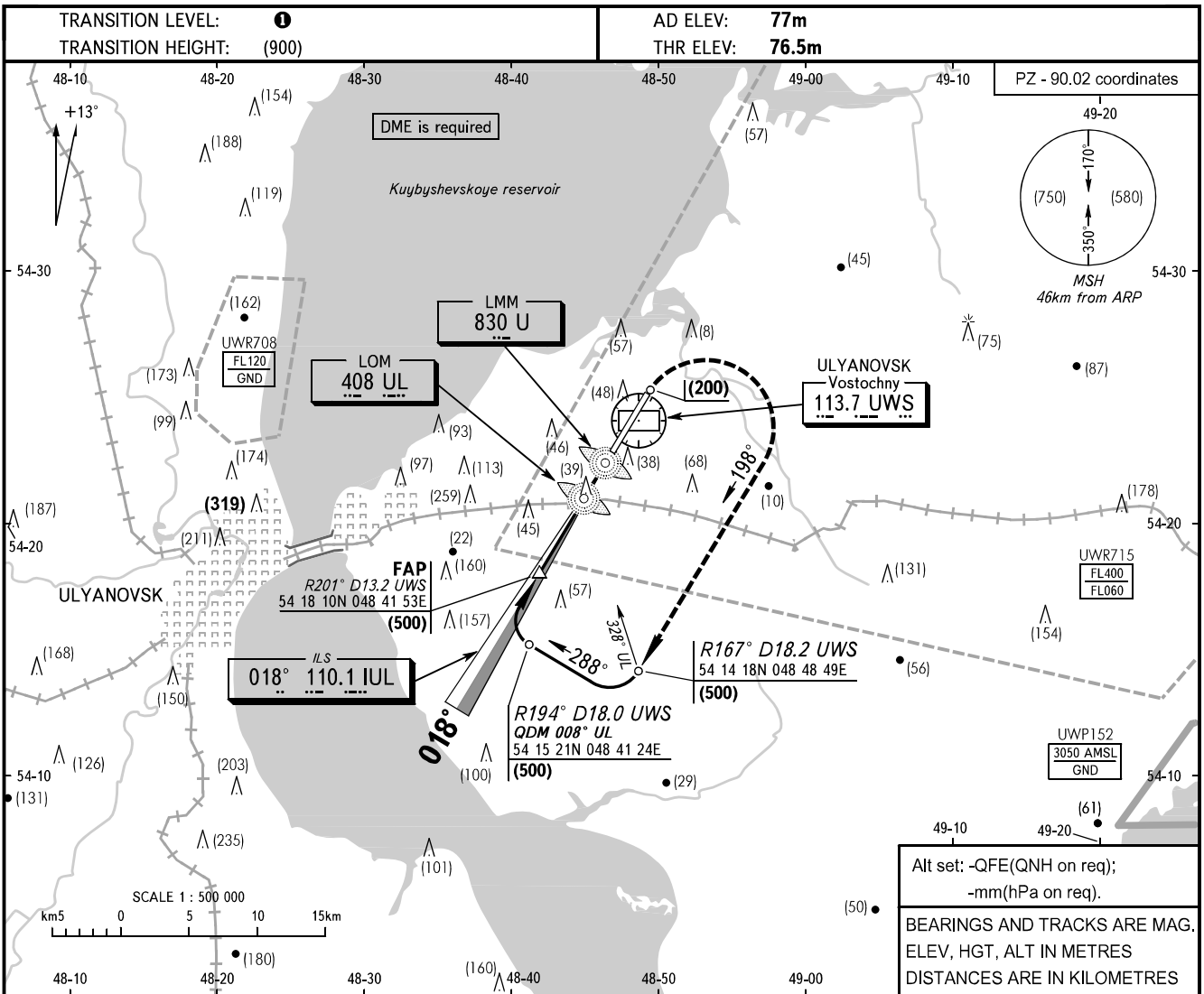


**INSTRUMENT
APPROACH
CHART - ICAO**

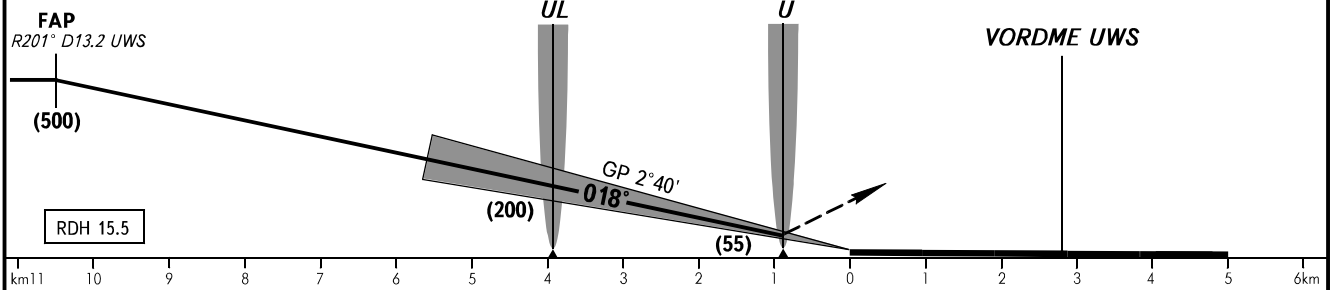
VOSTOCHNY TOWER **124.200**

ULYANOVSK, RUSSIA
VOSTOCHNY
ILS RWY 02 CAT I



Alt set: -QFE(QNH on req);
-mm(hPa on req).
BEARINGS AND TRACKS ARE MAG.
ELEV, HGT, ALT IN METRES
DISTANCES ARE IN KILOMETRES

MISSED APPROACH
Climb to (200), then turn RIGHT
onto track 198° climbing to (500),
then according to chart.



OCA(H)		A	B	C	D					
Straight-in Approach	CAT I	119(42)	122(45)	125(48)	128(51)					
GROUND SPEED		km/h	150	180	210	240	270	300	330	360
RATE OF DESCENT		m/s	2.0	2.4	2.7	3.1	3.5	3.9	4.3	4.7

TRANSITION LEVEL:
- FL050 when atmospheric pressure is 726mm mercury column or above;
- FL060 when atmospheric pressure is less than 726mm mercury column.
WARNING
During missed approach, deviation to the left of the course line is PROHIBITED.

CHANGE: NIL