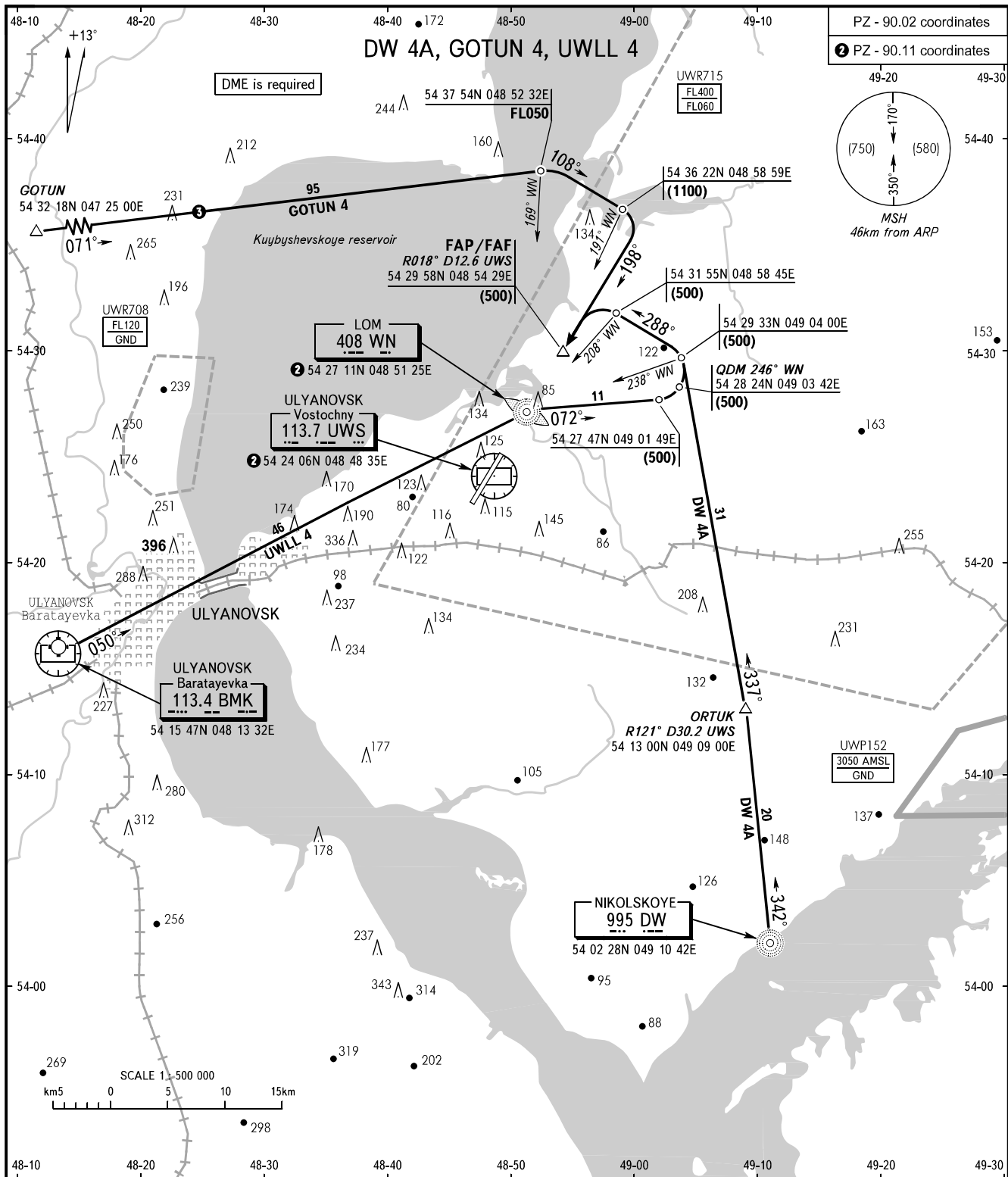


STANDARD ARRIVAL CHART
INSTRUMENT (STAR) - ICAO

ULYANOVSK, RUSSIA
VOSTOCHNY
RWY 20

TRANSITION
LEVEL : ①



PZ - 90.02 coordinates
② PZ - 90.11 coordinates

49-20 49-30
54-40 54-30
54-20 54-10
54-00

(750) (580)
170
350
MSH
46km from ARP

VOSTOCHNY TOWER 124.200

① TRANSITION LEVEL:
- FL050 when atmospheric pressure is 726mm mercury column or above;
- FL060 when atmospheric pressure is less than 726mm mercury column.

② Only for Russian users of airspace.

BEARINGS AND TRACKS ARE MAGNETIC
ALTITUDES, HEIGHTS AND ELEVATIONS ARE IN METRES
DISTANCES ARE IN KILOMETRES

AIRAC AMDT 08/20 Federal Air Transport Agency

CHANGE: OBST