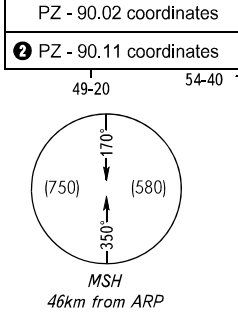
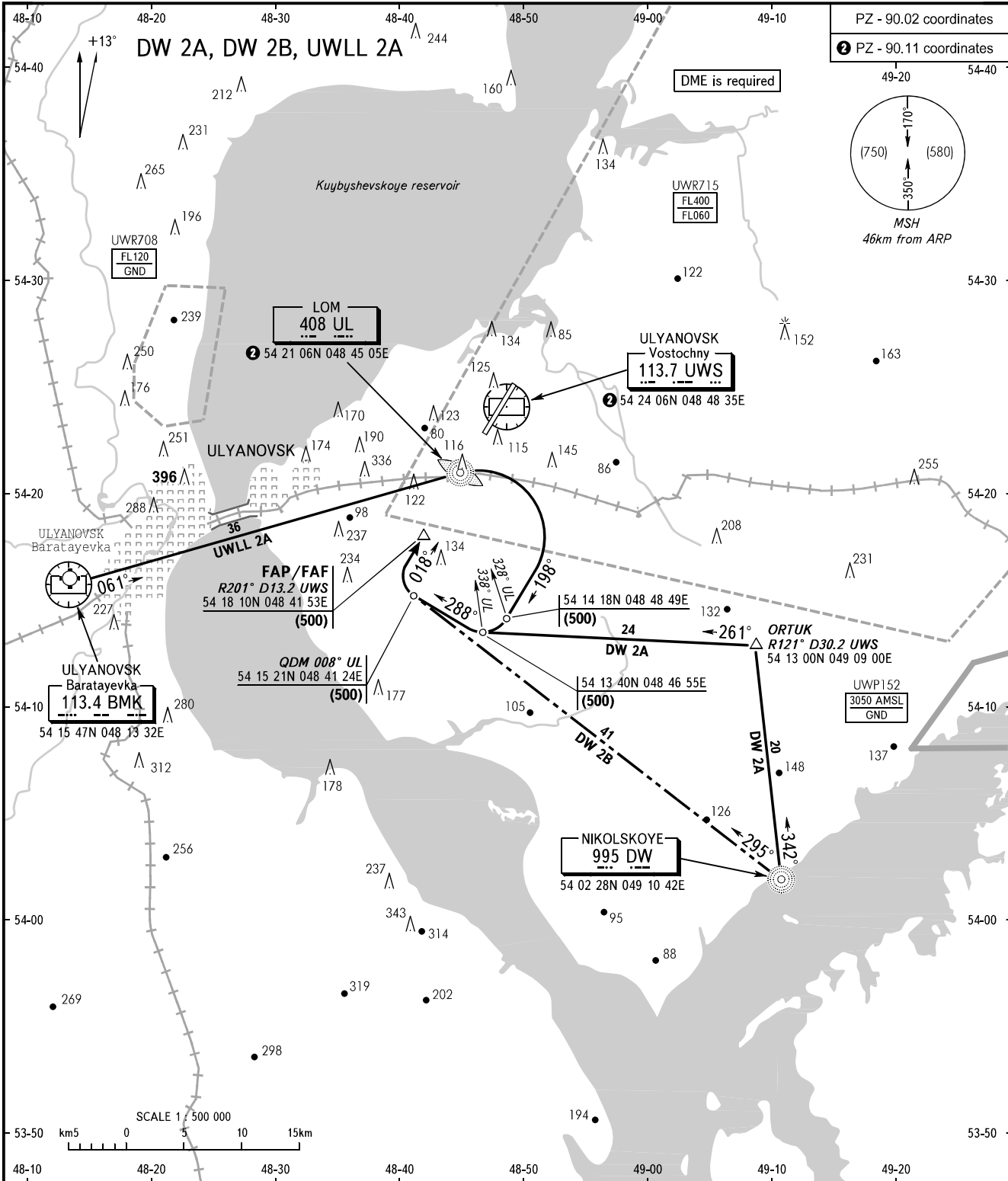


STANDARD ARRIVAL CHART
INSTRUMENT (STAR) - ICAO

ULYANOVSK, RUSSIA
VOSTOCHNY
RWY 02

TRANSITION
LEVEL: ①



VOSTOCHNY TOWER 124.200

① TRANSITION LEVEL:
- FL050 when atmospheric pressure is 726mm mercury column or above;
- FL060 when atmospheric pressure is less than 726mm mercury column.

BEARINGS AND TRACKS ARE MAGNETIC
ALTITUDES, HEIGHTS AND ELEVATIONS ARE IN METRES
DISTANCES ARE IN KILOMETRES

CHANGE: OBST