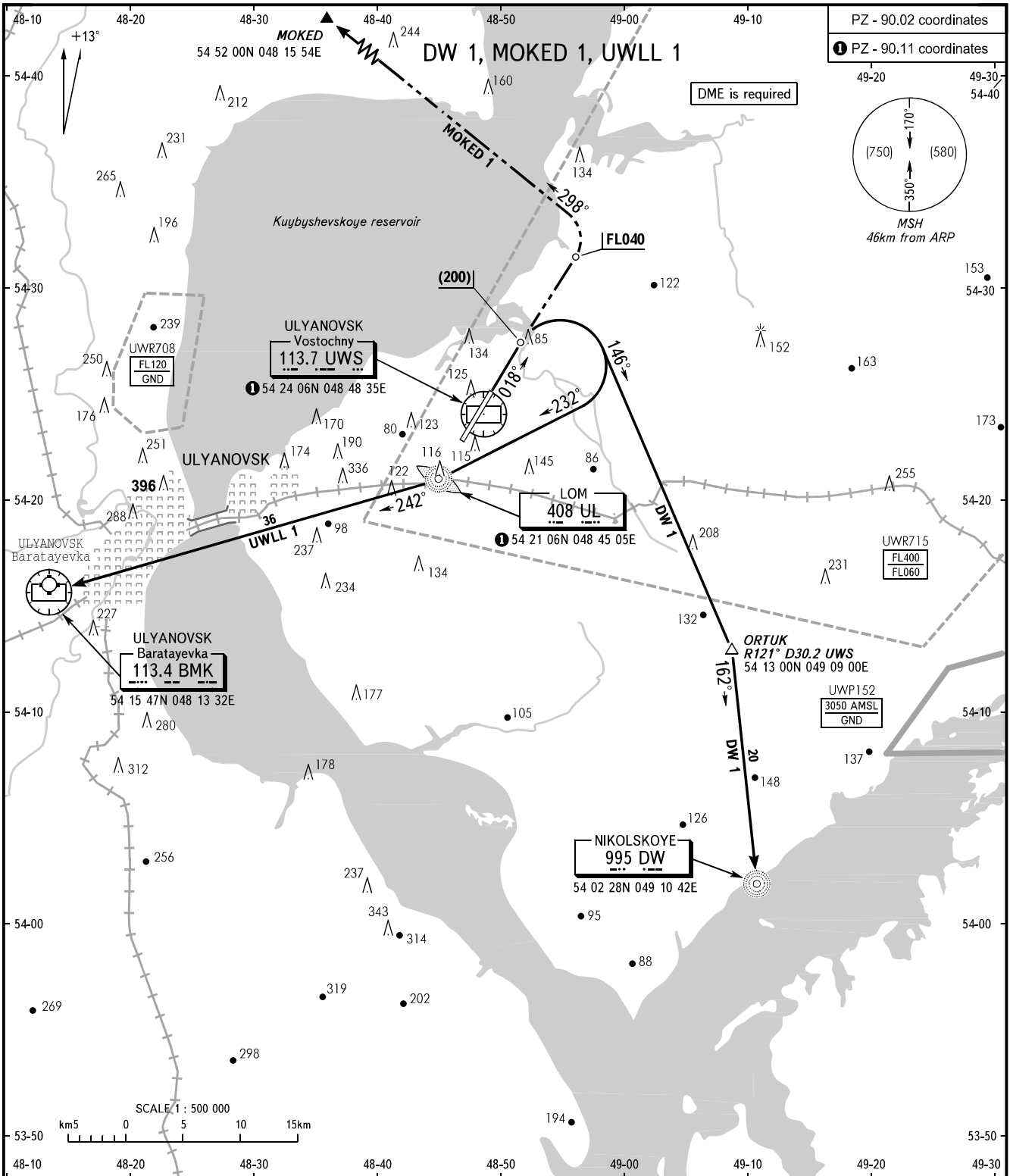


STANDARD DEPARTURE CHART
INSTRUMENT (SID) - ICAO

TRANSITION
HEIGHT : (900)

ULYANOVSK, RUSSIA
VOSTOCHNY
RWY 02



PZ - 90.02 coordinates
 PZ - 90.11 coordinates

(750) (580)
 MSH
 46km from ARP

VOSTOCHNY TOWER 124.200

WARNING
 FL for passing AWY entry points - by ATS unit.

BEARINGS AND TRACKS ARE MAGNETIC
 ALTITUDES, HEIGHTS AND ELEVATIONS ARE IN METRES
 DISTANCES ARE IN KILOMETRES

CHANGE: OBST