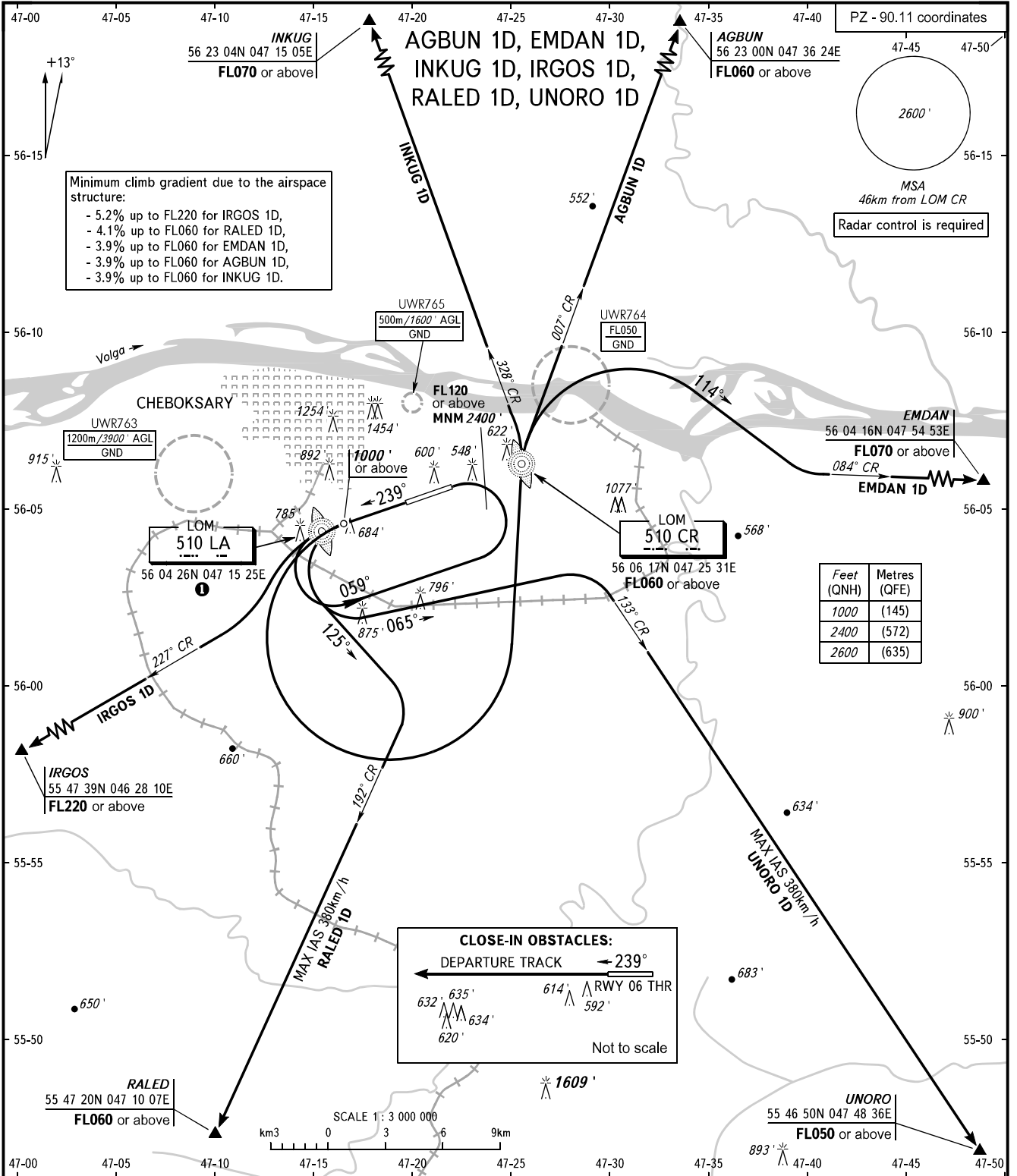


STANDARD DEPARTURE CHART  
INSTRUMENT (SID) - ICAO

CHEBOKSARY, RUSSIA  
CHEBOKSARY  
RWY 24

TRANSITION  
ALTITUDE : 4000'



TOWER 119.300

**WARNING**  
For IRGOS 1D climb to FL120 or above in holding area over LOM LA.

BEARINGS AND TRACKS ARE MAGNETIC  
ALTITUDES AND ELEVATIONS IN FEET  
DISTANCES IN KILOMETRES