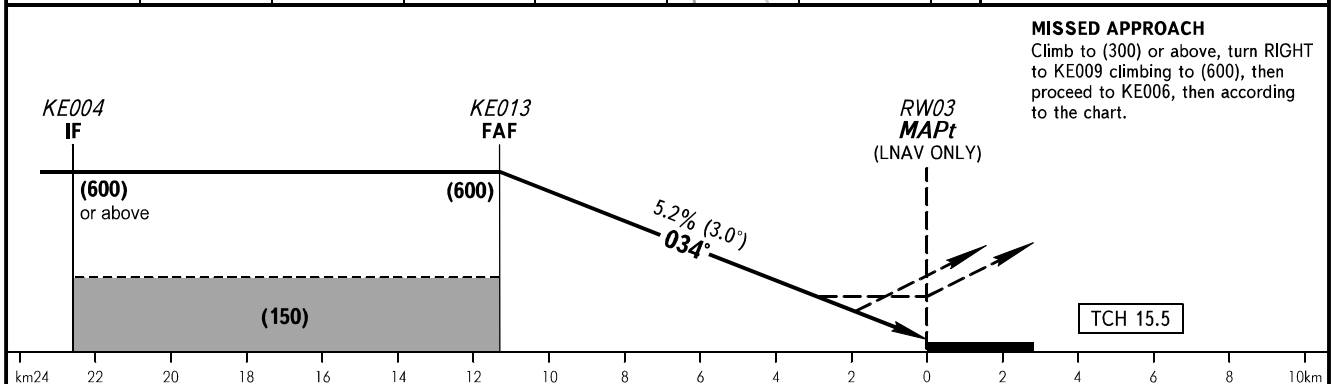
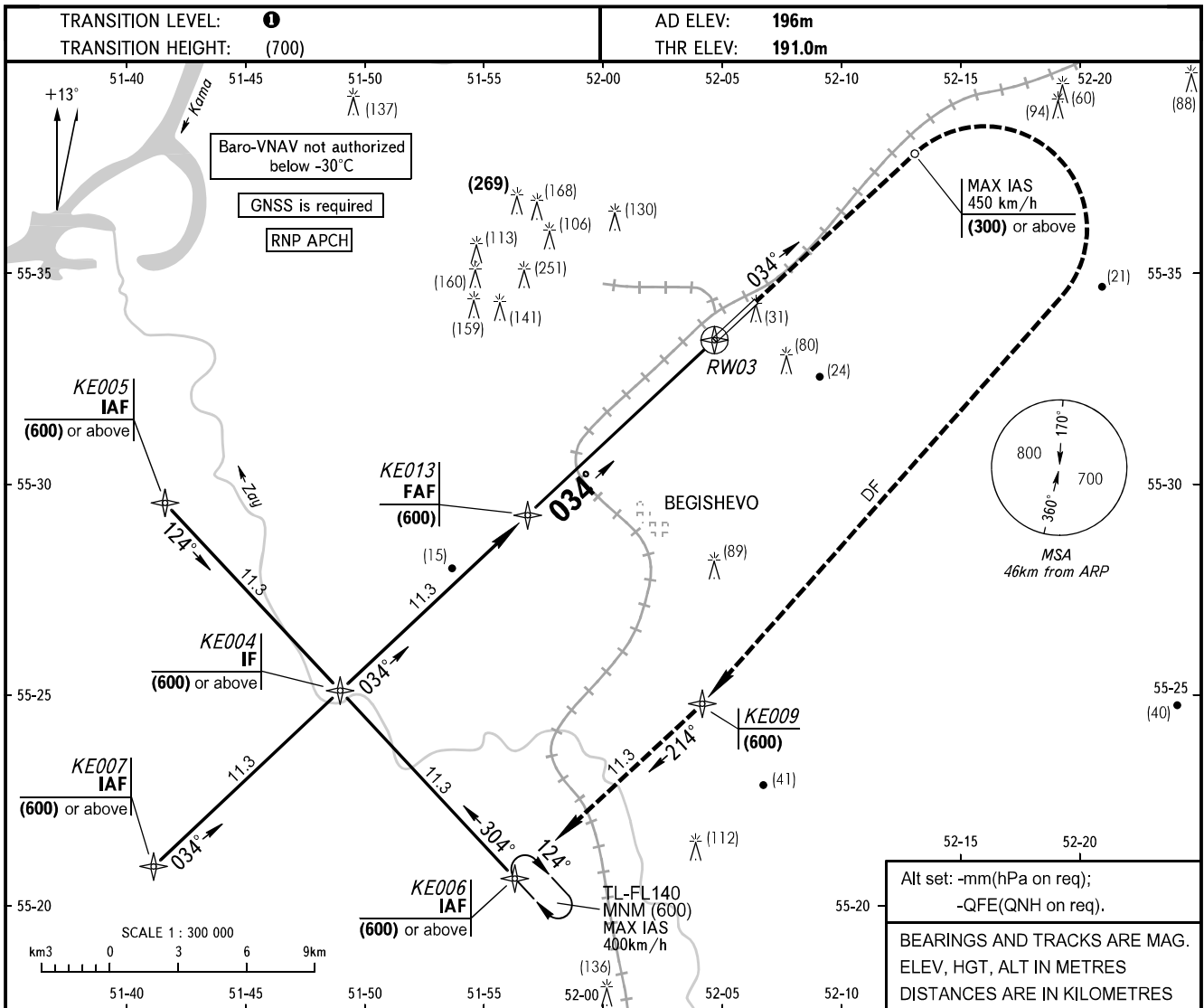


**INSTRUMENT  
APPROACH  
CHART - ICAO**

RADAR	127.900
TOWER	121.200

**BEGISHEVO, RUSSIA**  
BEGISHEVO  
RNAV (GNSS) RWY 03



OCA(H)		A	B	C	D								
Straight-in Approach	LNAV/VNAV	255(64)	259(68)	261(70)	264(73)								
	LNAV	296(105)	296(105)	296(105)	296(105)								
Circling		330(130)	365(165)	445(245)	565(370)								
GROUND SPEED	km/h	150	170	190	210	230	250	270	290	310	330	350	370
RATE OF DESCENT	m/s	2.2	2.5	2.8	3.1	3.3	3.6	3.9	4.2	4.5	4.8	5.1	5.4

**1** TRANSITION LEVEL:  
 - FL040 when atmospheric pressure is 742mm mercury column or above;  
 - FL050 when atmospheric pressure is 715mm mercury column or above but less than 742mm mercury column;  
 - FL060 when atmospheric pressure is less than 715mm mercury column.

**WARNING**  
 Timing not authorized for defining MAPt.

CHANGE: New chart