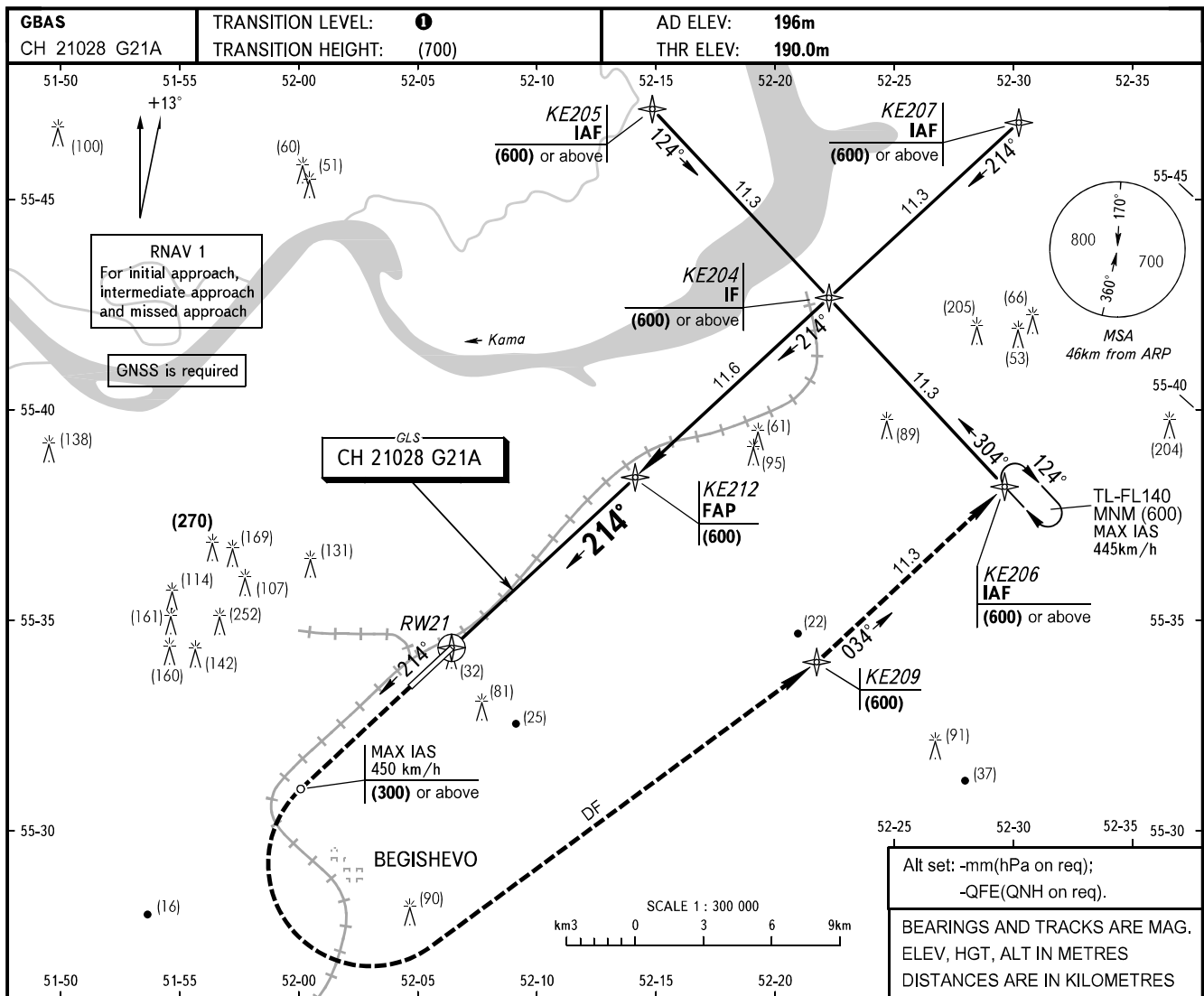


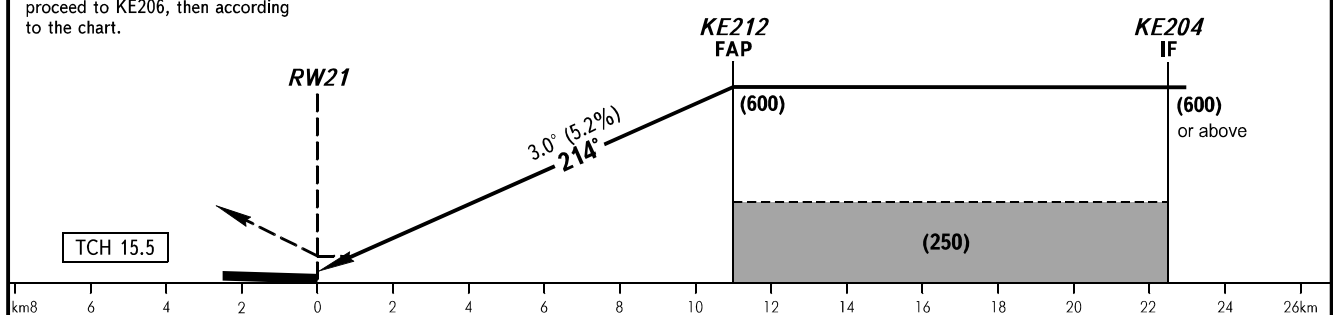
**INSTRUMENT
APPROACH
CHART - ICAO**

BEGISHEVO, RUSSIA
BEGISHEVO
GLS RWY 21 CAT I

RADAR TOWER 127.900
TOWER 121.200



MISSED APPROACH
Climb to (300) or above, turn LEFT to KE209 climbing to (600), then proceed to KE206, then according to the chart.



OCA(H)		A	B	C	D									
Straight-in Approach	CAT I	236(46)	239(49)	243(53)	248(58)									
Circling		330(130)	365(165)	445(245)	565(370)									
GROUND SPEED		km/h	150	170	190	210	230	250	270	290	310	330	350	370
RATE OF DESCENT		m/s	2.2	2.5	2.8	3.1	3.3	3.6	3.9	4.2	4.5	4.8	5.1	5.4

1 TRANSITION LEVEL:
- FL040 when atmospheric pressure is 742mm mercury column or above;
- FL050 when atmospheric pressure is 715mm mercury column or above but less than 742mm mercury column;
- FL060 when atmospheric pressure is less than 715mm mercury column.