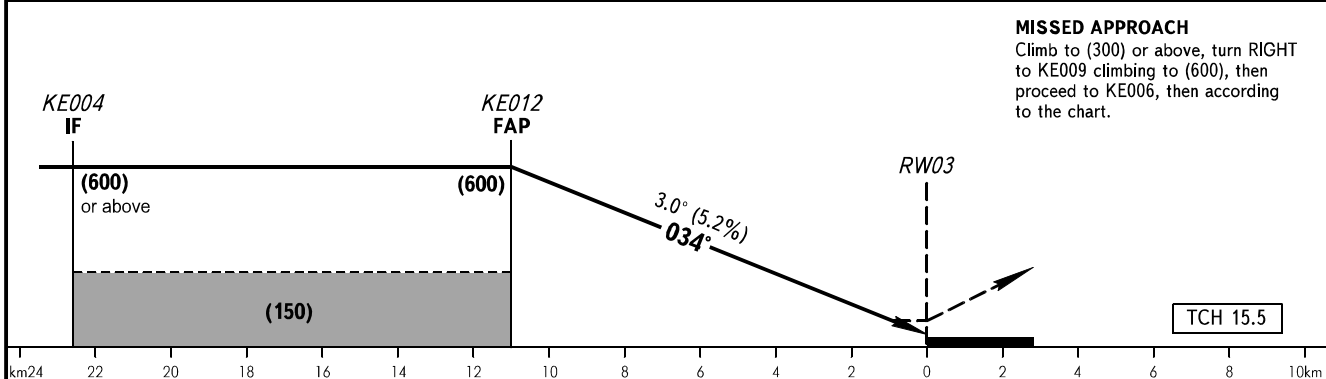
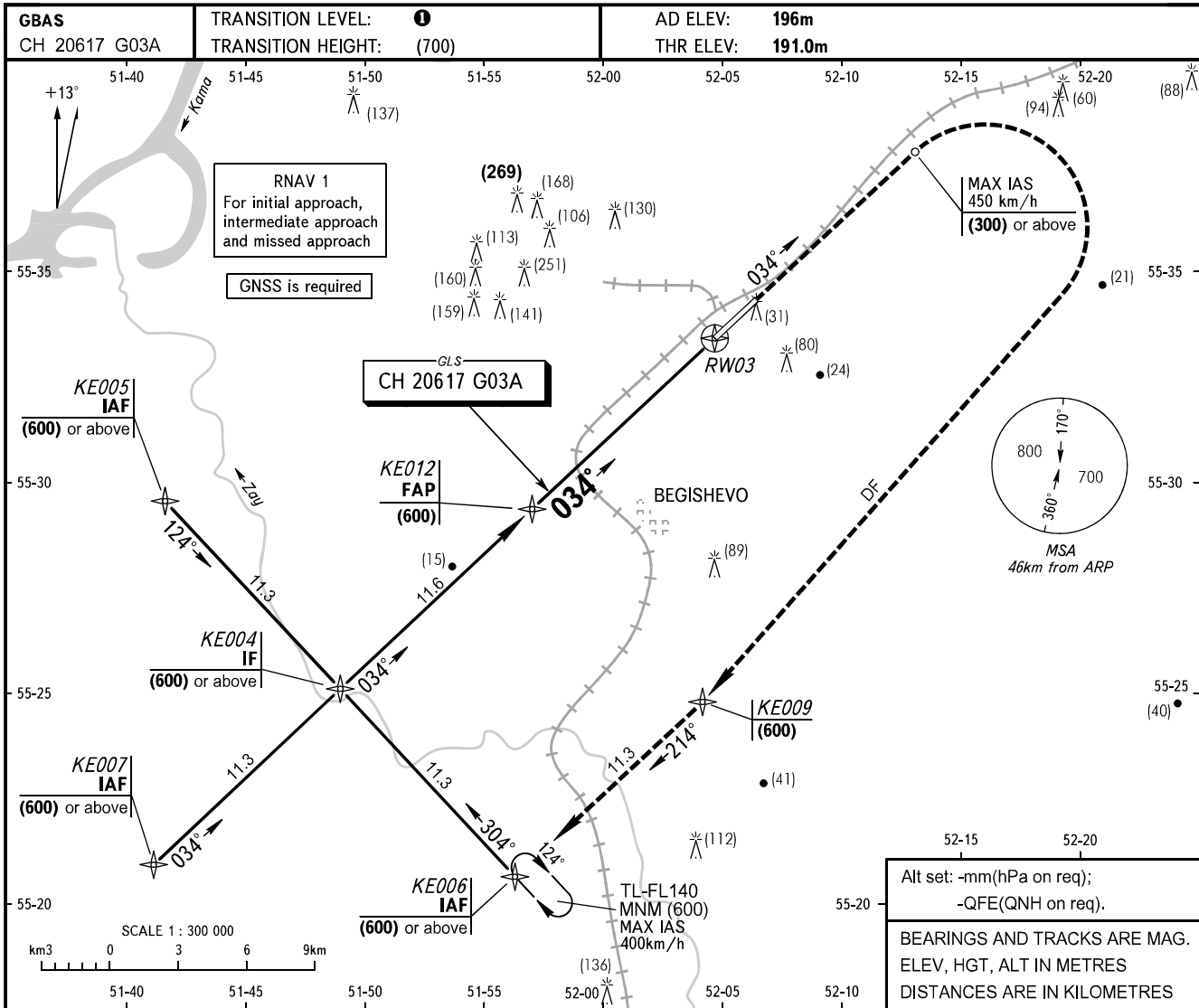


INSTRUMENT
APPROACH
CHART - ICAO

BEGISHEVO, RUSSIA
BEGISHEVO
GLS RWY 03 CAT I

RADAR	127.900
TOWER	121.200



OCA(H)		A	B	C	D								
Straight-in Approach	CAT I	236(45)	238(47)	241(50)	244(53)								
Circling		330(130)	365(165)	445(245)	565(370)								
GROUND SPEED	km/h	150	170	190	210	230	250	270	290	310	330	350	370
RATE OF DESCENT	m/s	2.2	2.5	2.8	3.1	3.3	3.6	3.9	4.2	4.5	4.8	5.1	5.4

1 TRANSITION LEVEL:
 - FL040 when atmospheric pressure is 742mm mercury column or above;
 - FL050 when atmospheric pressure is 715mm mercury column or above but less than 742mm mercury column;
 - FL060 when atmospheric pressure is less than 715mm mercury column.

CHANGE: New chart