

STANDARD ARRIVAL CHART  
INSTRUMENT (STAR) - ICAO

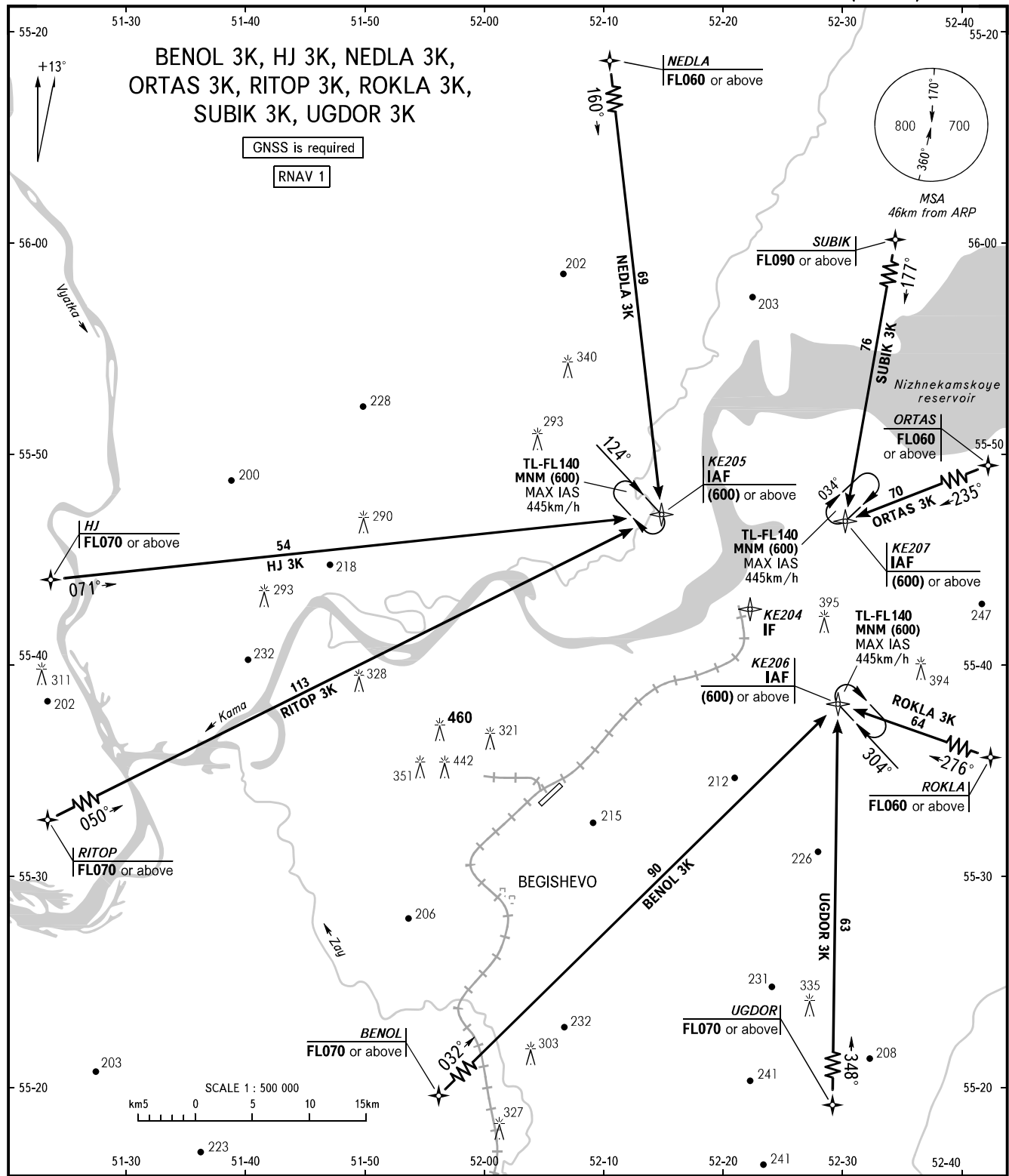
BEGISHEVO, RUSSIA  
BEGISHEVO  
RNAV (GNSS) RWY 21

TRANSITION  
LEVEL : **1**

BENOL 3K, HJ 3K, NEDLA 3K,  
ORTAS 3K, RITOP 3K, ROKLA 3K,  
SUBIK 3K, UGDOR 3K

GNSSE is required

RNAV 1



TOWER **121.200**  
RADAR **127.900**

- 1** TRANSITION LEVEL:
- FL040 when atmospheric pressure is 742mm mercury column or above;
  - FL050 when atmospheric pressure is 715mm mercury column or above but less than 742mm mercury column;
  - FL060 when atmospheric pressure is less than 715mm mercury column.

BEARINGS AND TRACKS ARE MAGNETIC  
ALTITUDES, HEIGHTS AND ELEVATIONS ARE IN METRES  
DISTANCES ARE IN KILOMETRES