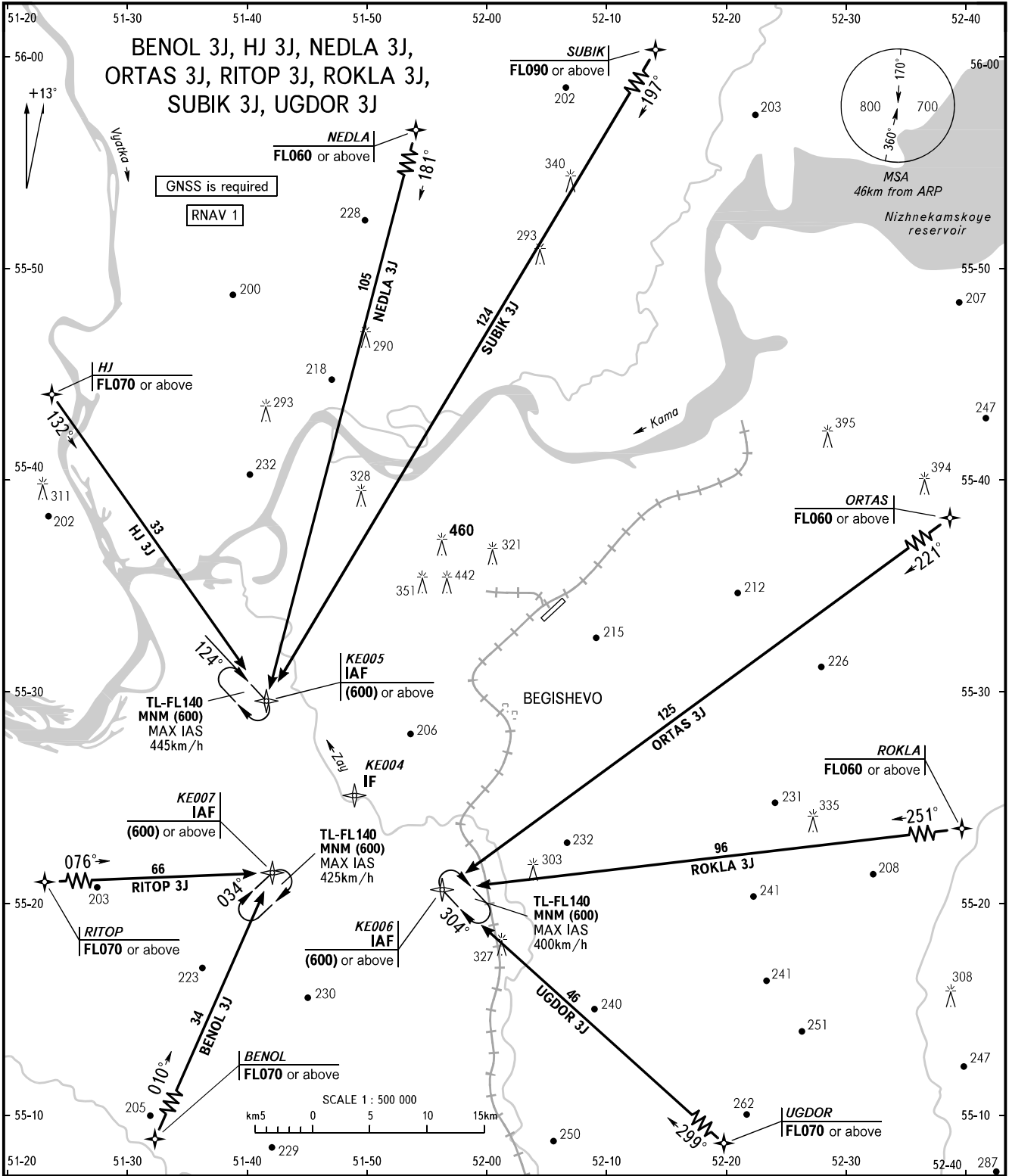


STANDARD ARRIVAL CHART
INSTRUMENT (STAR) - ICAO

TRANSITION
LEVEL : **1**

BEGISHEVO, RUSSIA
BEGISHEVO
RNAV (GNSS) RWY 03



TOWER 121.200
RADAR 127.900

1 TRANSITION LEVEL:
- FL040 when atmospheric pressure is 742mm mercury column or above;
- FL050 when atmospheric pressure is 715mm mercury column or above but less than 742mm mercury column;
- FL060 when atmospheric pressure is less than 715mm mercury column.

BEARINGS AND TRACKS ARE MAGNETIC
ALTITUDES, HEIGHTS AND ELEVATIONS ARE IN METRES
DISTANCES ARE IN KILOMETRES