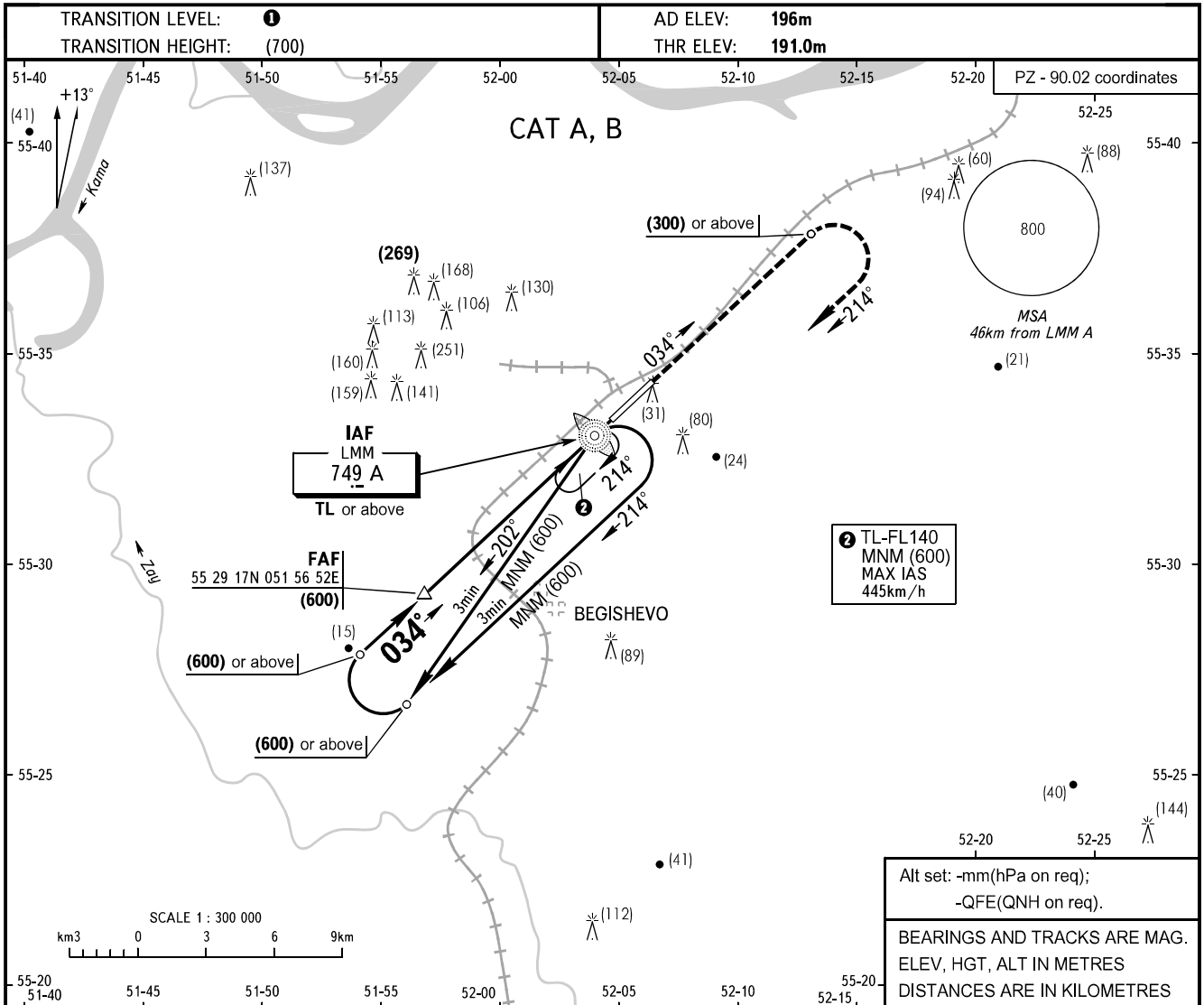


**INSTRUMENT
APPROACH
CHART - ICAO**

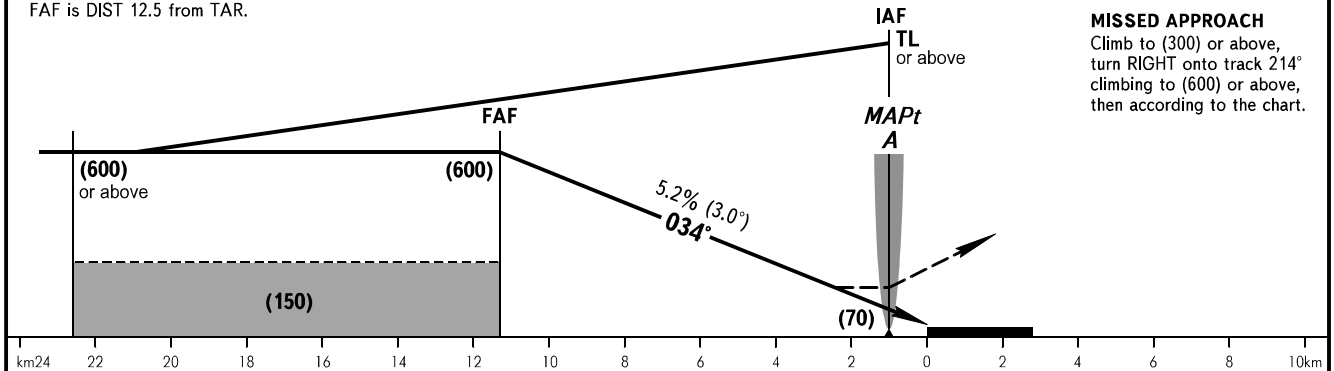
BEGISHEVO, RUSSIA
BEGISHEVO
NDB Y RWY 03

RADAR	127.900
TOWER	121.200



FAF is DIST 12.5 from TAR.

MISSED APPROACH
Climb to (300) or above,
turn RIGHT onto track 214°
climbing to (600) or above,
then according to the chart.



OCA(H)	A	B	C	D									
Straight-in Approach	296(105)	296(105)											
Circling	330(130)	365(165)											
GROUND SPEED	km/h	150	170	190	210	230	250	270	290	310	330	350	370
RATE OF DESCENT	m/s	2.2	2.5	2.8	3.1	3.3	3.6	3.9	4.2	4.5	4.8	5.1	5.4

① TRANSITION LEVEL:
- FL040 when atmospheric pressure is 742mm mercury column or above;
- FL050 when atmospheric pressure is 715mm mercury column or above but less than 742mm mercury column;
- FL060 when atmospheric pressure is less than 715mm mercury column.

CHANGE: New chart