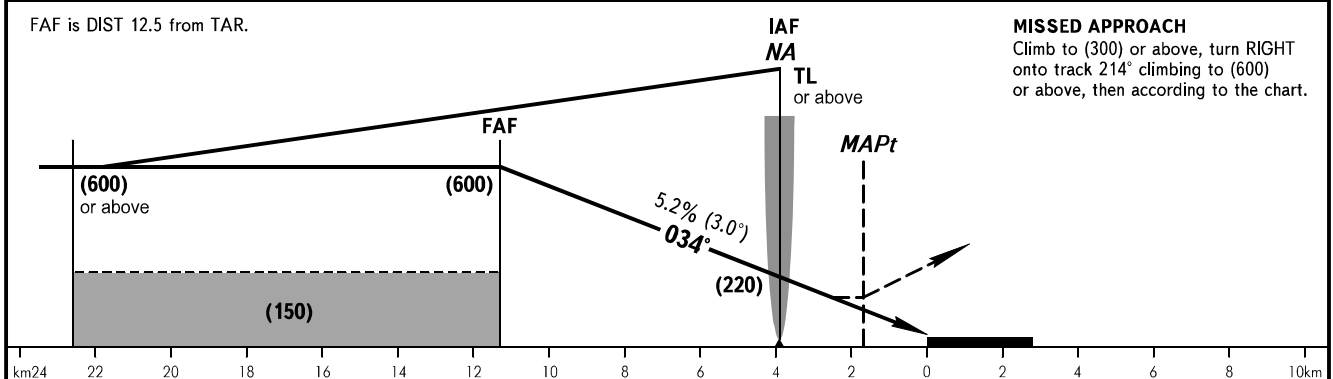
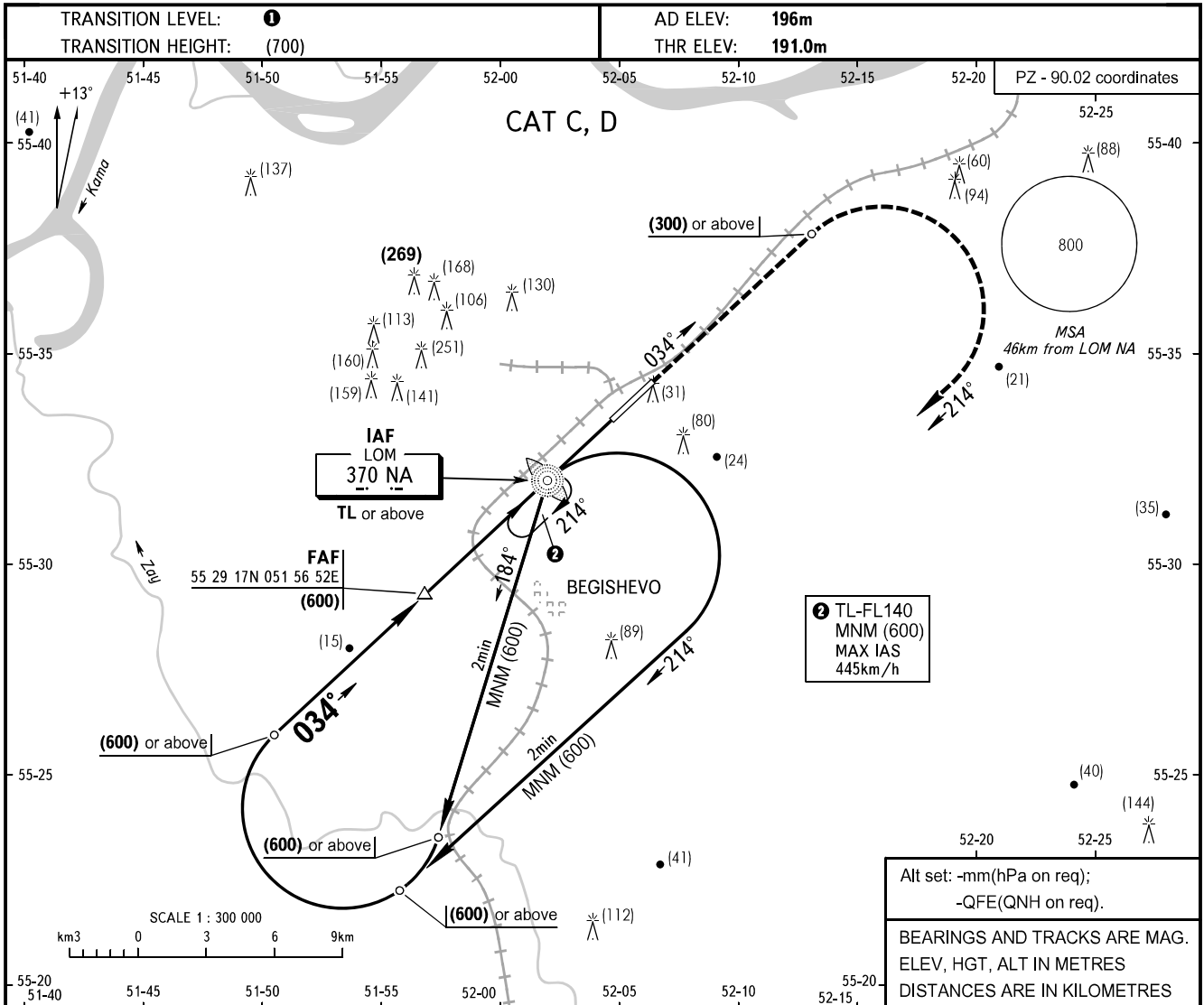


**INSTRUMENT
APPROACH
CHART - ICAO**

RADAR **127.900**
TOWER **121.200**

BEGISHEVO, RUSSIA
BEGISHEVO
NDB X RWY 03



MISSED APPROACH
Climb to (300) or above, turn RIGHT onto track 214° climbing to (600) or above, then according to the chart.

OCA(H)		A	B	C	D	① TRANSITION LEVEL:														
Straight-in Approach				296(105)	296(105)	- FL040 when atmospheric pressure is 742mm mercury column or above;														
						- FL050 when atmospheric pressure is 715mm mercury column or above but less than 742mm mercury column;														
Circling				445(245)	565(370)	- FL060 when atmospheric pressure is less than 715mm mercury column.														
GROUND SPEED	km/h	150	170	190	210	230	250	270	290	310	330	350	370							
FAF - MAPt	9600m	min:sec	3:50	3:23	3:02	2:45	2:30	2:18	2:08	1:59	1:51	1:45	1:39	1:33						
RATE OF DESCENT	m/s	2.2	2.5	2.8	3.1	3.3	3.6	3.9	4.2	4.5	4.8	5.1	5.4							

CHANGE: New chart