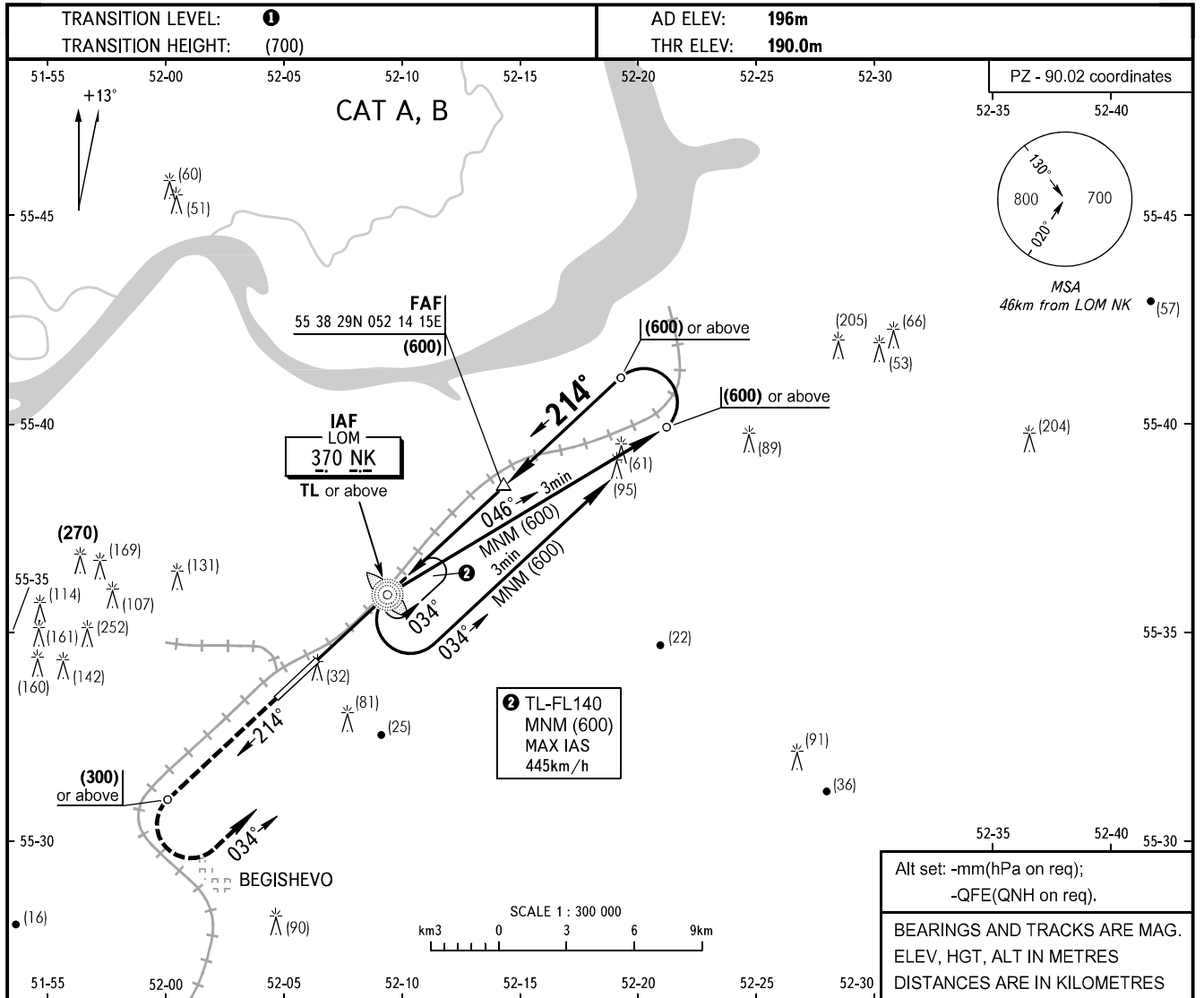


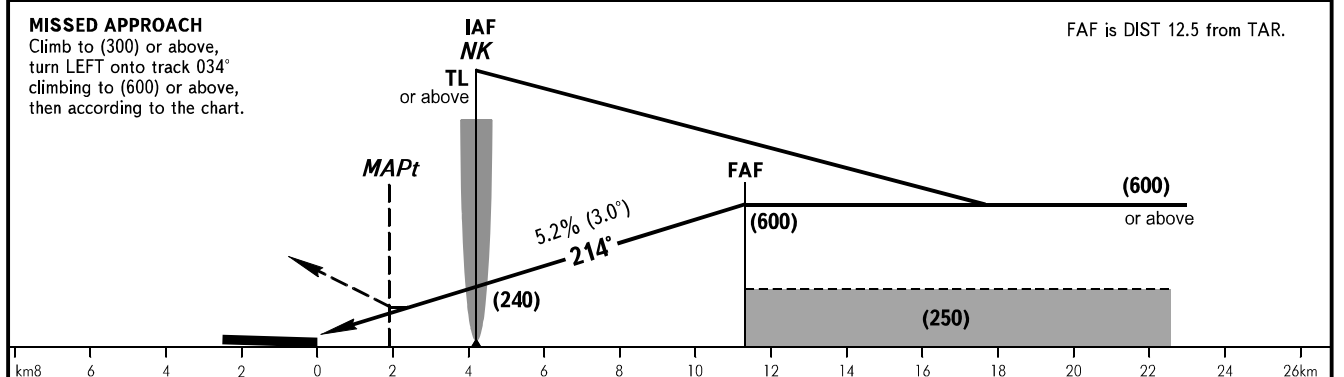
**INSTRUMENT
APPROACH
CHART - ICAO**

BEGISHEVO, RUSSIA
BEGISHEVO
NDB W RWY 21

| | |
|-------|---------|
| RADAR | 127.900 |
| TOWER | 121.200 |



Alt set: -mm(hPa on req);
-QFE(QNH on req).
BEARINGS AND TRACKS ARE MAG.
ELEV, HGT, ALT IN METRES
DISTANCES ARE IN KILOMETRES



| OCA(H) | A | B | C | D | | | | | | | | | |
|----------------------|----------|----------|------|------|------|------|------|------|------|------|------|------|------|
| Straight-in Approach | 311(125) | 311(125) | | | | | | | | | | | |
| | | | | | | | | | | | | | |
| Circling | 330(130) | 365(165) | | | | | | | | | | | |
| GROUND SPEED | km/h | 150 | 170 | 190 | 210 | 230 | 250 | 270 | 290 | 310 | 330 | 350 | 370 |
| FAF - MAPt 9400m | min:sec | 3:46 | 3:19 | 2:58 | 2:41 | 2:27 | 2:15 | 2:05 | 1:57 | 1:49 | 1:43 | 1:37 | 1:31 |
| RATE OF DESCENT | m/s | 2.2 | 2.5 | 2.8 | 3.1 | 3.3 | 3.6 | 3.9 | 4.2 | 4.5 | 4.8 | 5.1 | 5.4 |

① TRANSITION LEVEL:
- FLO40 when atmospheric pressure is 742mm mercury column or above;
- FLO50 when atmospheric pressure is 715mm mercury column or above but less than 742mm mercury column;
- FLO60 when atmospheric pressure is less than 715mm mercury column.