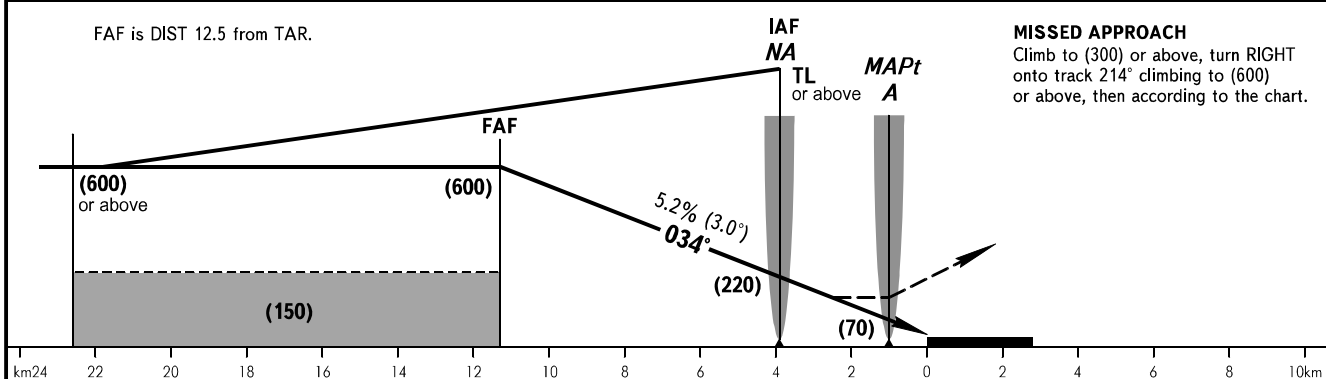
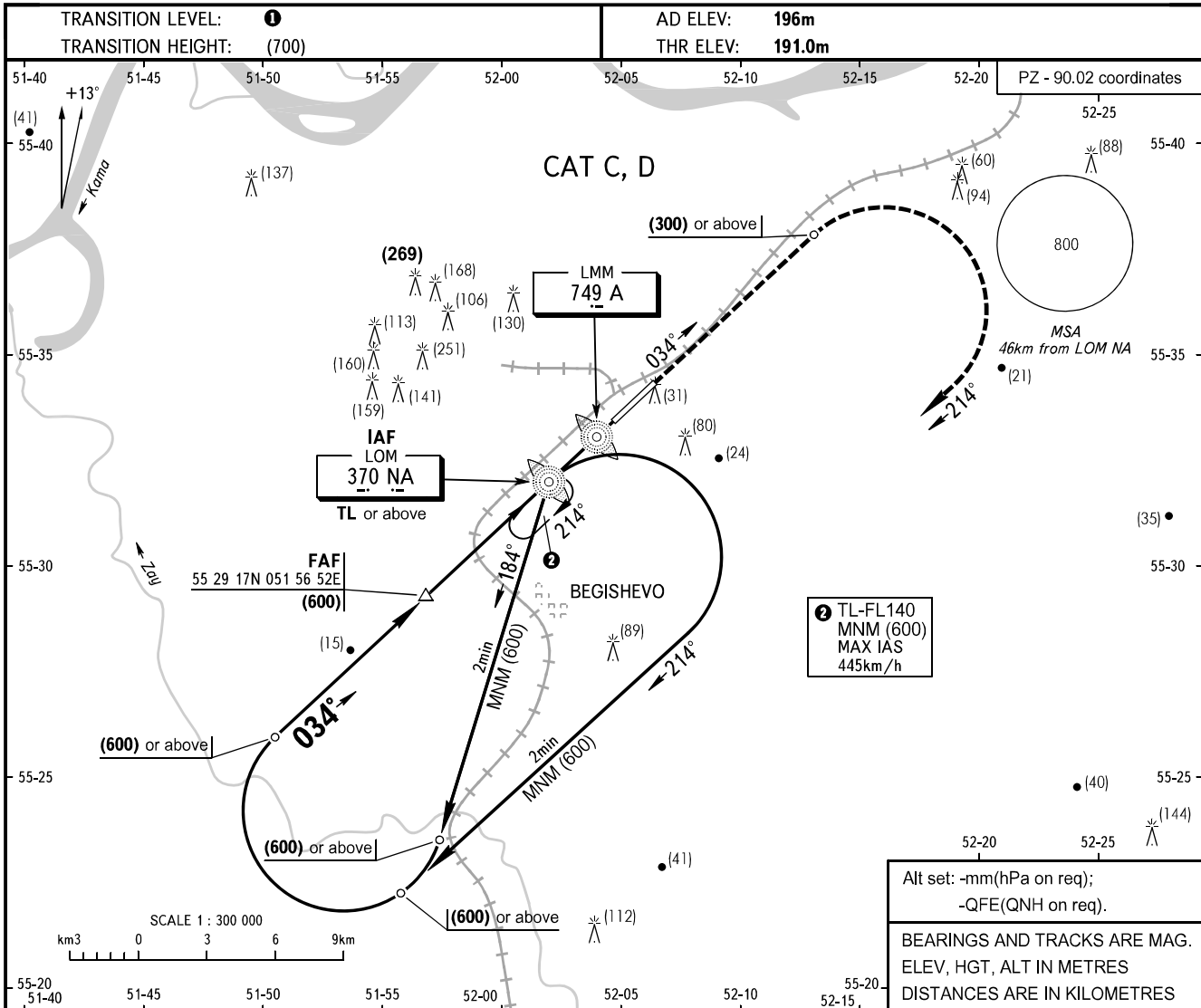


**INSTRUMENT
APPROACH
CHART - ICAO**

RADAR **127.900**
TOWER **121.200**

BEGISHEVO, RUSSIA
BEGISHEVO
2 NDB V RWY 03



OCA(H)		A	B	C	D								
Straight-in Approach				296(105)	296(105)								
Circling				445(245)	565(370)								
GROUND SPEED	km/h	150	170	190	210	230	250	270	290	310	330	350	370
RATE OF DESCENT	m/s	2.2	2.5	2.8	3.1	3.3	3.6	3.9	4.2	4.5	4.8	5.1	5.4

1 TRANSITION LEVEL:
 - FL040 when atmospheric pressure is 742mm mercury column or above;
 - FL050 when atmospheric pressure is 715mm mercury column or above but less than 742mm mercury column;
 - FL060 when atmospheric pressure is less than 715mm mercury column.

CHANGE: New chart