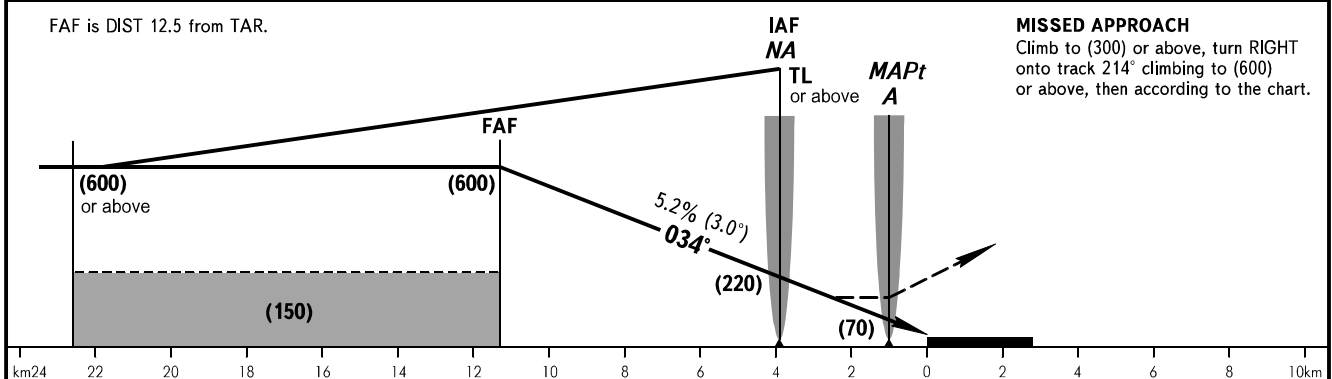
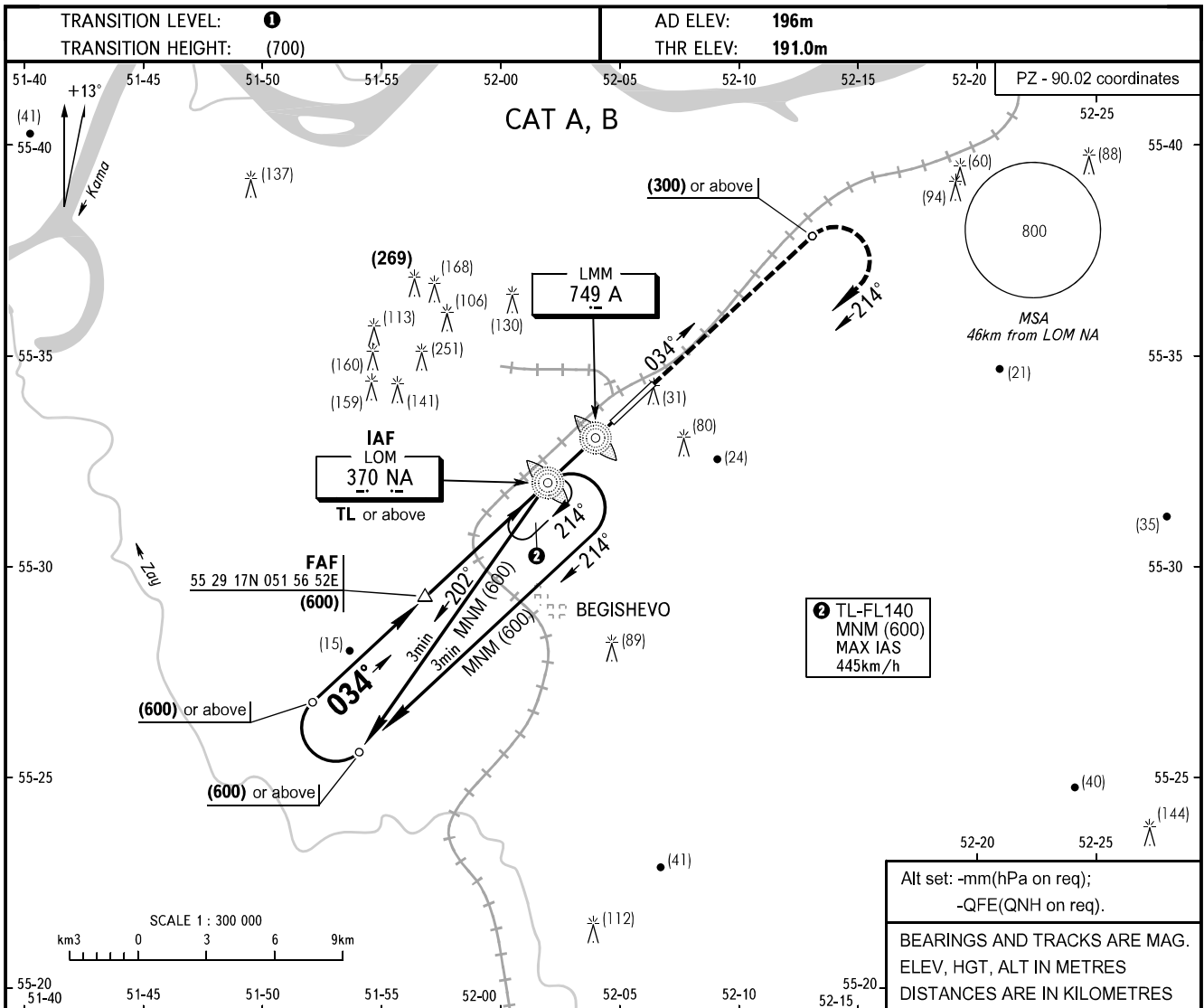


**INSTRUMENT  
APPROACH  
CHART - ICAO**

RADAR	127.900
TOWER	121.200

**BEGISHEVO, RUSSIA**  
BEGISHEVO  
2 NDB U RWY 03



OCA(H)	A	B	C	D									
Straight-in Approach	296(105)	296(105)											
Circling	330(130)	365(165)											
GROUND SPEED	km/h	150	170	190	210	230	250	270	290	310	330	350	370
RATE OF DESCENT	m/s	2.2	2.5	2.8	3.1	3.3	3.6	3.9	4.2	4.5	4.8	5.1	5.4

① **TRANSITION LEVEL:**

- FL040 when atmospheric pressure is 742mm mercury column or above;
- FL050 when atmospheric pressure is 715mm mercury column or above but less than 742mm mercury column;
- FL060 when atmospheric pressure is less than 715mm mercury column.

CHANGE: New chart