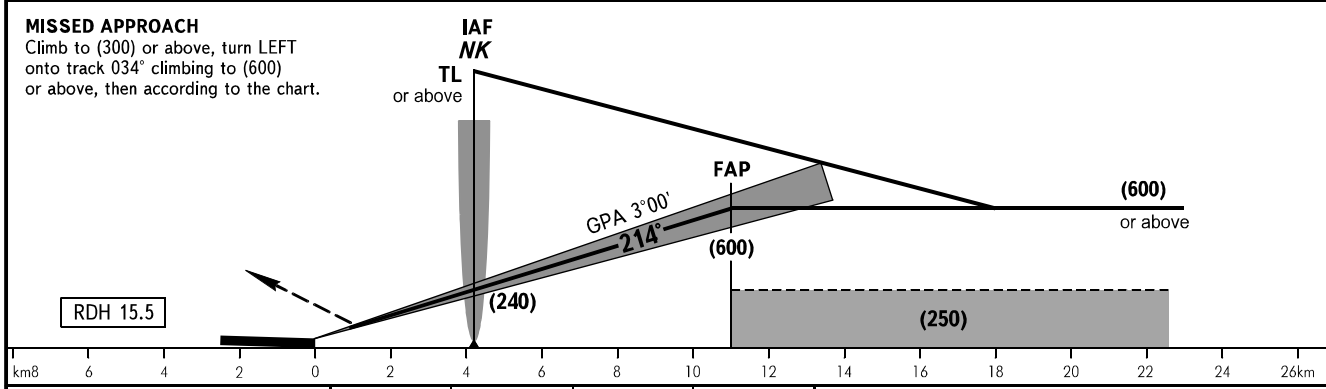
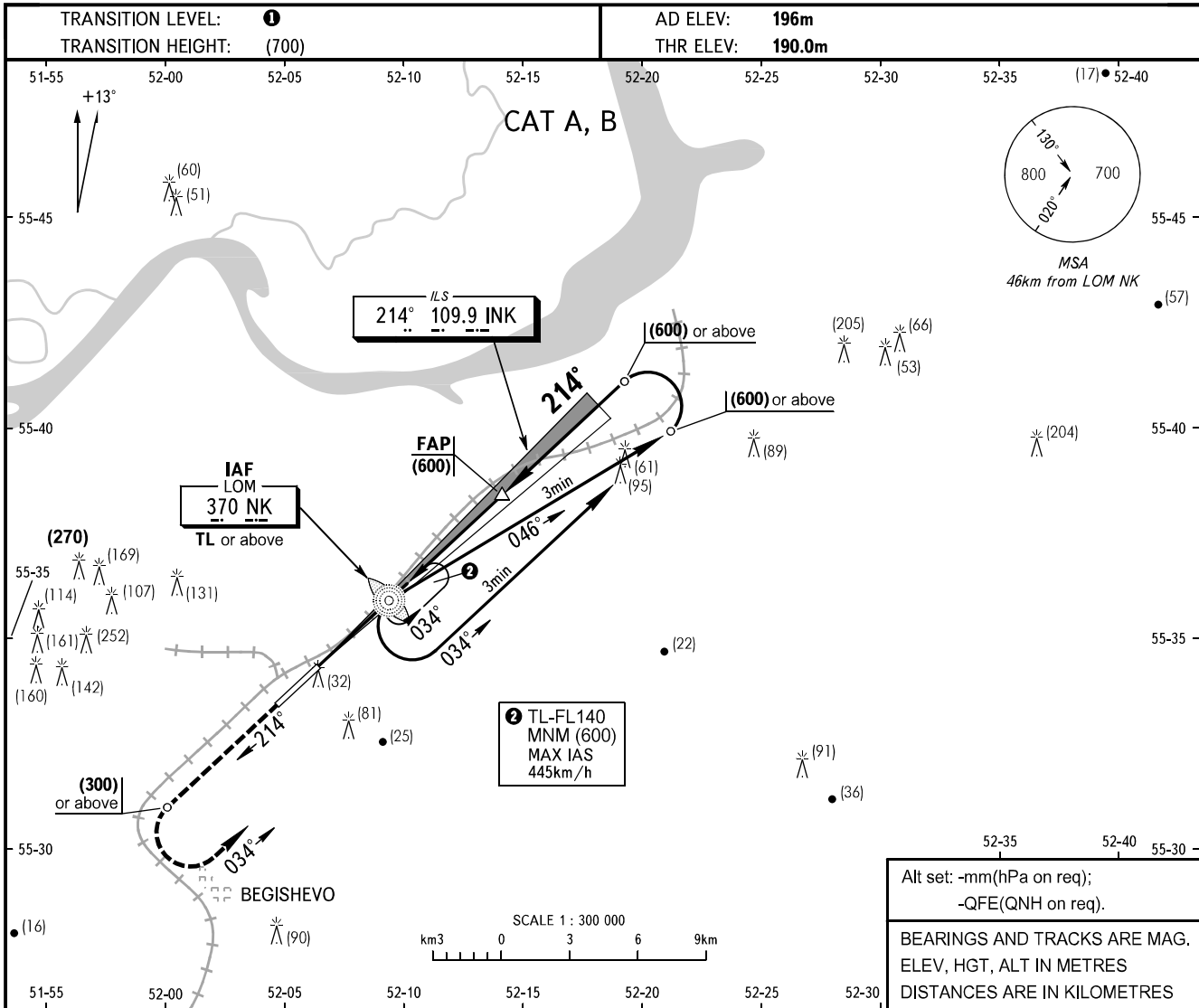


**INSTRUMENT  
APPROACH  
CHART - ICAO**

RADAR	127.900
TOWER	121.200

**BEGISHEVO, RUSSIA**  
BEGISHEVO  
ILS X RWY 21 CAT I



OCA(H)		A	B	C	D									
Straight-in Approach	<b>CAT I</b>	236(46)	239(49)											
Circling		330(130)	365(165)											
GROUND SPEED		km/h	150	170	190	210	230	250	270	290	310	330	350	370
RATE OF DESCENT		m/s	2.2	2.5	2.8	3.1	3.3	3.6	3.9	4.2	4.5	4.8	5.1	5.4

**1** TRANSITION LEVEL:  
 - FL040 when atmospheric pressure is 742mm mercury column or above;  
 - FL050 when atmospheric pressure is 715mm mercury column or above but less than 742mm mercury column;  
 - FL060 when atmospheric pressure is less than 715mm mercury column.

CHANGE: New chart