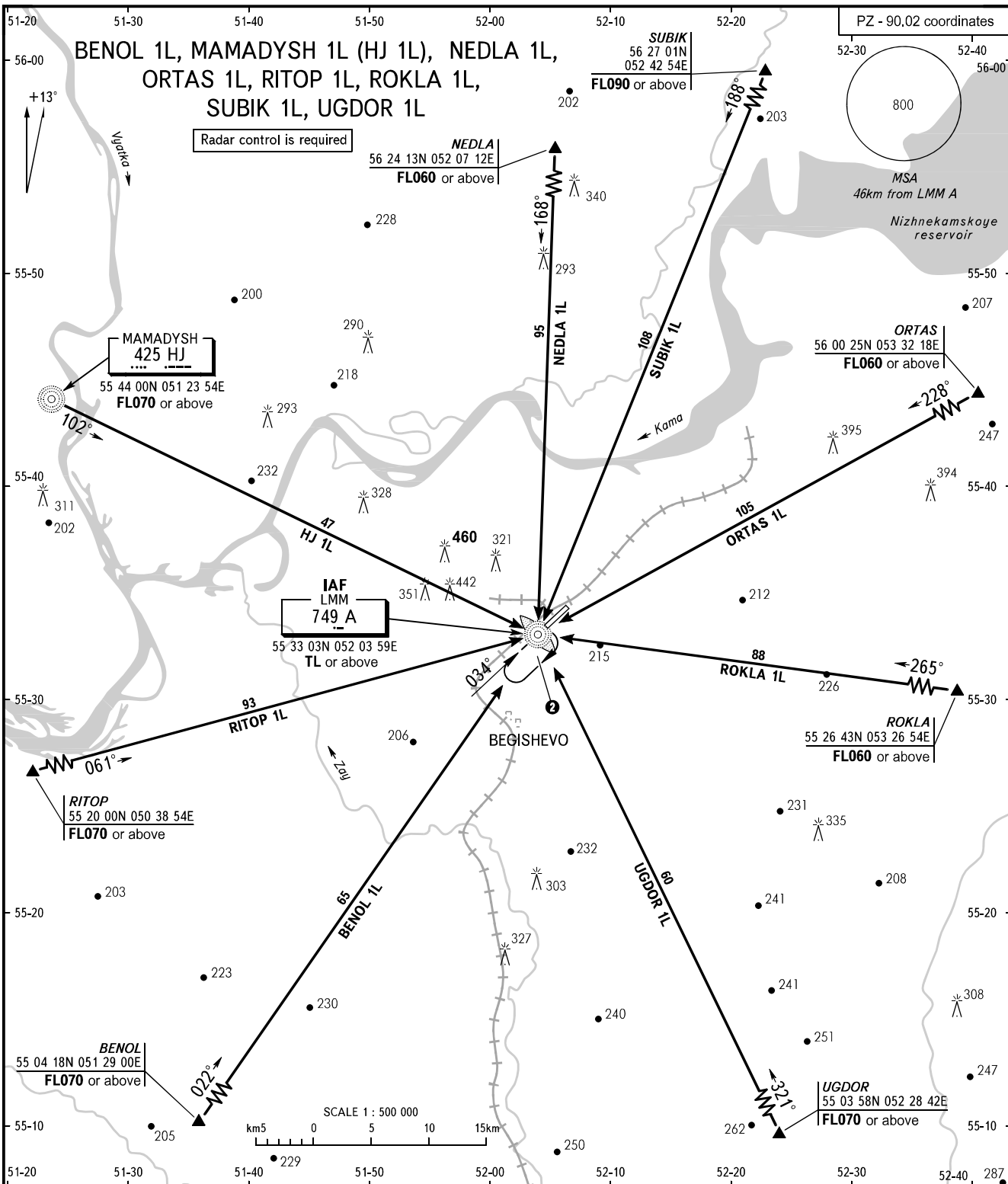


STANDARD ARRIVAL CHART
INSTRUMENT (STAR) - ICAO

BEGISHEVO, RUSSIA
BEGISHEVO
RWY 03

TRANSITION
LEVEL : ①



TOWER 121.200
RADAR 127.900

- ① TRANSITION LEVEL:
- FL040 when atmospheric pressure is 742mm mercury column or above;
- FL050 when atmospheric pressure is 715mm mercury column or above but less than 742mm mercury column;
- FL060 when atmospheric pressure is less than 715mm mercury column.

② TL-FL 140
MNM (600)
MAX IAS 445km/h

BEARINGS AND TRACKS ARE MAGNETIC
ALTITUDES, HEIGHTS AND ELEVATIONS ARE IN METRES
DISTANCES ARE IN KILOMETRES