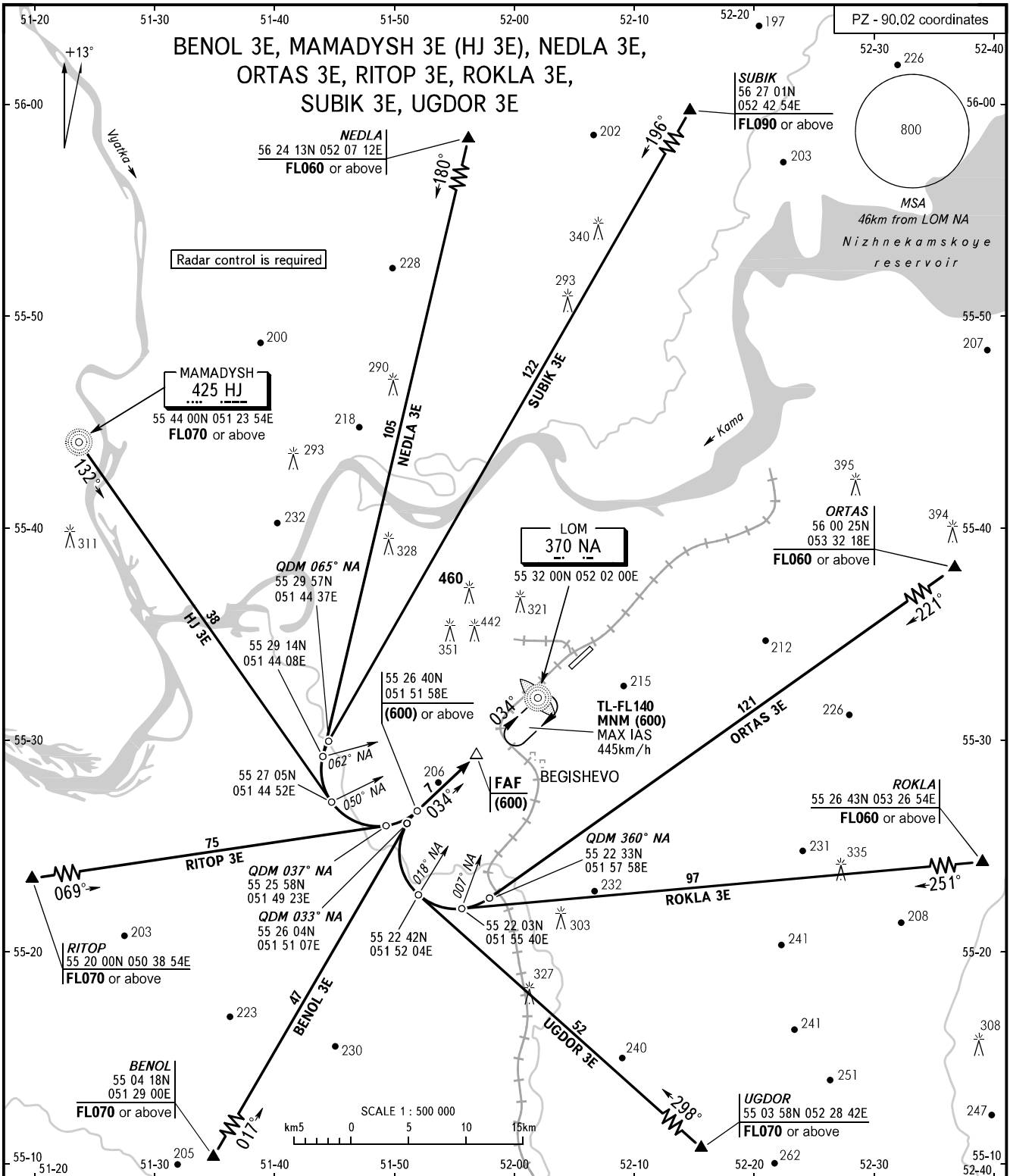


STANDARD ARRIVAL CHART
INSTRUMENT (STAR) - ICAO

BEGISHEVO, RUSSIA
BEGISHEVO
RWY 03

TRANSITION
LEVEL : **1**

BENOL 3E, MAMADYSH 3E (HJ 3E), NEDLA 3E,
ORTAS 3E, RITOP 3E, ROKLA 3E,
SUBIK 3E, UGDOR 3E



1 TRANSITION LEVEL:
- FL040 when atmospheric pressure is 742mm mercury column or above;
- FL050 when atmospheric pressure is 715mm mercury column or above but less than 742mm mercury column;
- FL060 when atmospheric pressure is less than 715mm mercury column.

BEARINGS AND TRACKS ARE MAGNETIC
ALTITUDES, HEIGHTS AND ELEVATIONS ARE IN METRES
DISTANCES ARE IN KILOMETRES

CHANGE: New chart